

Datasheet for ABIN2782491
anti-NOLC1 antibody (C-Term)

5 Images

[Go to Product page](#)

Overview

Quantity:	100 µL
Target:	NOLC1
Binding Specificity:	C-Term
Reactivity:	Human, Rat, Mouse, Cow, Dog, Guinea Pig, Rabbit, Goat, Horse, Zebrafish (Danio rerio), Saccharomyces cerevisiae
Host:	Rabbit
Clonality:	Polyclonal
Conjugate:	This NOLC1 antibody is un-conjugated
Application:	Western Blotting (WB), Immunohistochemistry (IHC)

Product Details

Immunogen:	The immunogen is a synthetic peptide directed towards the C terminal region of human NOLC1
Sequence:	DNSFDAKRGAGDWGERANQVLKFTKGKSF RHEKTKKKRG SYRGGGISVQ
Predicted Reactivity:	Cow: 100%, Dog: 100%, Goat: 100%, Guinea Pig: 100%, Horse: 100%, Human: 100%, Mouse: 100%, Rabbit: 100%, Rat: 100%, Yeast: 92%, Zebrafish: 100%
Characteristics:	This is a rabbit polyclonal antibody against NOLC1. It was validated on Western Blot and immunohistochemistry.
Purification:	Protein A purified

Target Details

Target:	NOLC1
---------	-------

Target Details

Alternative Name:	NOLC1 (NOLC1 Products)
Background:	<p>Related to nucleologenesis, NOLC1 may play a role in the maintenance of the fundamental structure of the fibrillar center and dense fibrillar component in the nucleolus. It has intrinsic GTPase and ATPase activities. NOLC1 may play an important role in transcription catalyzed by RNA polymerase I.</p> <p>Alias Symbols: KIAA0035, NOPP130, NOPP140, NS5ATP13, P130</p> <p>Protein Interaction Partner: UBC, SUMO1, ERG, WWOX, SUZ12, EED, RNF2, RABEP2, CD2AP, SPAG9, YWHAQ, YWHAE, CSNK2A2, PAN2, gag, PNKP, WHSC1, SAP18, G3BP1, GPRC5A, PTRF, NOP58, NOP16, RRP7A, RSL1D1, RRS1, UTP14A, RPL19, RPL18A, RPL15, RPL11, RPL6, RPL5, RPL4, NHP2L1, IK, GTF3C1, FBL, AP</p> <p>Protein Size: 699</p>
Molecular Weight:	73 kDa
Gene ID:	9221
NCBI Accession:	NM_004741 , NP_004732
UniProt:	Q14978
Pathways:	Regulation of G-Protein Coupled Receptor Protein Signaling

Application Details

Application Notes:	Optimal working dilutions should be determined experimentally by the investigator.
Comment:	Antigen size: 699 AA
Restrictions:	For Research Use only

Handling

Format:	Liquid
Concentration:	Lot specific
Buffer:	Liquid. Purified antibody supplied in 1x PBS buffer with 0.09 % (w/v) sodium azide and 2 % sucrose.
Preservative:	Sodium azide
Precaution of Use:	This product contains Sodium azide: a POISONOUS AND HAZARDOUS SUBSTANCE which should be handled by trained staff only.

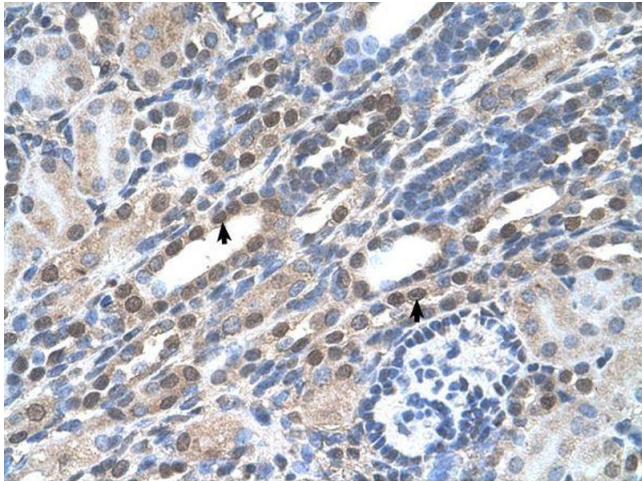
Handling

Handling Advice: Avoid repeated freeze-thaw cycles.

Storage: -20 °C

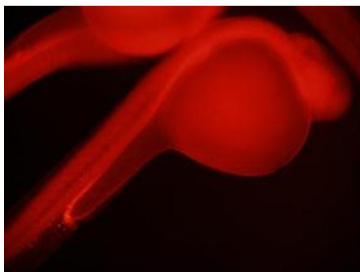
Storage Comment: For short term use, store at 2-8°C up to 1 week. For long term storage, store at -20°C in small aliquots to prevent freeze-thaw cycles.

Images



Immunohistochemistry

Image 1. Sample Type: Human Kidney Dilution: 4.0-8.0ug/mL



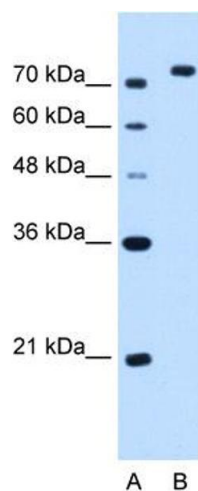
NOCL1 (ARP46110_T100)
Immunohistochemistry
Sample: Zebrafish Kidney
Dilution: 1:250

Application data in forum

Submitted by:
James Lister
Virginia Commonwealth University

Immunohistochemistry

Image 2. Sample Type: Zebrafish Kidney Dilution: 1:250



Western Blotting

Image 3. NOLC1 antibody - C-terminal region validated by WB using HepG2 cell lysate at 2.5ug/ml. NOLC1 is strongly supported by BioGPS gene expression data to be expressed in Human HepG2 cells

Please check the [product details page](#) for more images. Overall 5 images are available for ABIN2782491.