

Datasheet for ABIN2782492  
**anti-APOBEC3B antibody (N-Term)**

## 3 Images

[Go to Product page](#)

## Overview

Quantity:	100 µL
Target:	APOBEC3B
Binding Specificity:	N-Term
Reactivity:	Human, Rat, Cow, Horse, Pig, Rabbit, Zebrafish (Danio rerio)
Host:	Rabbit
Clonality:	Polyclonal
Conjugate:	This APOBEC3B antibody is un-conjugated
Application:	Western Blotting (WB)

## Product Details

Immunogen:	The immunogen is a synthetic peptide directed towards the N terminal region of human APOBEC3B
Sequence:	NQLPAYKCFQ ITWFSWTPC PDCVAKLAEF LSEHPNVTLT ISAARLYYYW
Predicted Reactivity:	Cow: 82%, Horse: 91%, Human: 100%, Pig: 92%, Rabbit: 82%, Rat: 91%, Zebrafish: 90%
Characteristics:	This is a rabbit polyclonal antibody against APOBEC3B. It was validated on Western Blot using a cell lysate as a positive control.
Purification:	Affinity Purified

## Target Details

Target:	APOBEC3B
---------	----------

## Target Details

Alternative Name:	APOBEC3B ( <a href="#">APOBEC3B Products</a> )
Background:	<p>APOBEC3B is a member of the cytidine deaminase family. It is thought that these proteins may be RNA editing enzymes and have roles in growth or cell cycle control. This gene is a member of the cytidine deaminase gene family. It is one of seven related genes or pseudogenes found in a cluster, thought to result from gene duplication, on chromosome 22. Members of the cluster encode proteins that are structurally and functionally related to the C to U RNA-editing cytidine deaminase APOBEC1. It is thought that the proteins may be RNA editing enzymes and have roles in growth or cell cycle control.</p> <p>Alias Symbols: APOBEC1L, ARCD3, ARP4, DJ742C19.2, FLJ21201, PHRBNL, bK150C2.2</p> <p>Protein Interaction Partner: UBC, EED,</p> <p>Protein Size: 382</p>
Molecular Weight:	46 kDa
Gene ID:	9582
NCBI Accession:	<a href="#">NM_004900</a> , <a href="#">NP_004891</a>
UniProt:	<a href="#">Q9UH17</a>

## Application Details

Application Notes:	Optimal working dilutions should be determined experimentally by the investigator.
Comment:	Antigen size: 382 AA
Restrictions:	For Research Use only

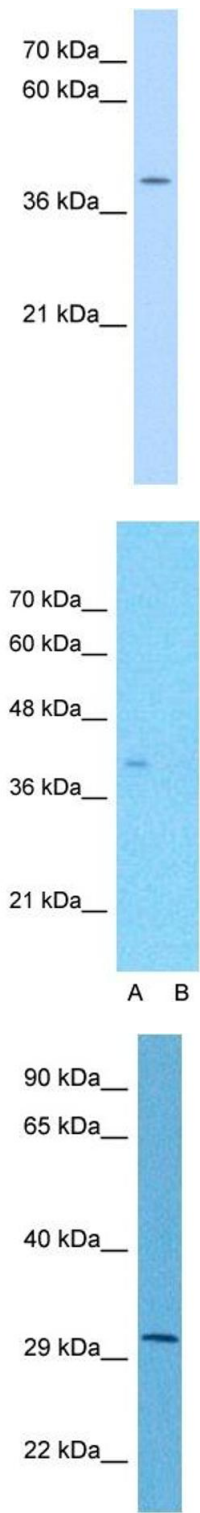
## Handling

Format:	Liquid
Concentration:	Lot specific
Buffer:	Liquid. Purified antibody supplied in 1x PBS buffer with 0.09 % (w/v) sodium azide and 2 % sucrose.
Preservative:	Sodium azide
Precaution of Use:	This product contains Sodium azide: a POISONOUS AND HAZARDOUS SUBSTANCE which should be handled by trained staff only.
Handling Advice:	Avoid repeated freeze-thaw cycles.

Handling

Storage:	-20 °C
Storage Comment:	For short term use, store at 2-8°C up to 1 week. For long term storage, store at -20°C in small aliquots to prevent freeze-thaw cycles.

Images



Western Blotting

**Image 1.** WB Suggested Anti-APOBEC3B Antibody Titration:  
0.2-1 ug/ml Positive Control: HepG2 cell lysate

Western Blotting

**Image 2.** Host: Rabbit Target Name: APOBEC3B Sample Type: HepG2 Lane A: Primary Antibody Lane B: Primary Antibody + Blocking Peptide Primary Antibody Concentration: 1ug/ml Peptide Concentration: 5ug/ml Lysate Quantity: 25ug/lane/lane Gel Concentration: 0.12

Western Blotting

**Image 3.** Host: Rabbit Target Name: APOBEC3B Sample Tissue: Human HCT116 Whole Cell Antibody Dilution: 1ug/ml