

Datasheet for ABIN2782496
anti-PLK1 antibody (C-Term)



[Go to Product page](#)

3 Images

Overview

Quantity:	100 µL
Target:	PLK1
Binding Specificity:	C-Term
Reactivity:	Human, Mouse, Rat, Cow, Dog, Rabbit, Guinea Pig, Horse
Host:	Rabbit
Clonality:	Polyclonal
Conjugate:	This PLK1 antibody is un-conjugated
Application:	Western Blotting (WB), Immunohistochemistry (IHC)

Product Details

Immunogen:	The immunogen is a synthetic peptide directed towards the C terminal region of human PLK1
Sequence:	KRDFRTYRLS LLEEGCCKE LASRLRYART MVDKLLSSRS ASNRLKAS
Predicted Reactivity:	Cow: 93%, Dog: 93%, Guinea Pig: 86%, Horse: 93%, Human: 100%, Mouse: 100%, Rabbit: 100%, Rat: 93%
Characteristics:	This is a rabbit polyclonal antibody against PLK1. It was validated on Western Blot using a cell lysate as a positive control.
Purification:	Affinity Purified

Target Details

Target:	PLK1
---------	------

Target Details

Alternative Name:	PLK1 (PLK1 Products)
Background:	<p>Serine/threonine-protein kinase that performs several important functions throughout M phase of the cell cycle, including the regulation of centrosome maturation and spindle assembly, the removal of cohesins from chromosome arms, the inactivation of APC/C inhibitors, and the regulation of mitotic exit and cytokinesis.</p> <p>Alias Symbols: PLK, STPK13</p> <p>Protein Interaction Partner: RAP1GAP, CHFR, KLHL22, BRCA1, BORA, EGFR, UBC, NUA1, MUS81, FBXO6, PPP6R2, STK3, BUB1B, FZR1, CDC20, CHEK2, TP53BP1, CDCA5, LATS1, CENPU, CDC25C, KLHL21, OFD1, CUL2, Sgt1, KRBA1, HSPA4, PHC2, KLHL9, FLJ20712, RABAC1, TANK, RBX1, VCP, CDH1, APP, STAG2, N</p> <p>Protein Size: 603</p>
Molecular Weight:	68 kDa
Gene ID:	5347
NCBI Accession:	NM_005030 , NP_005021
UniProt:	P53350
Pathways:	Cell Division Cycle, M Phase

Application Details

Application Notes:	Optimal working dilutions should be determined experimentally by the investigator.
Comment:	Antigen size: 603 AA
Restrictions:	For Research Use only

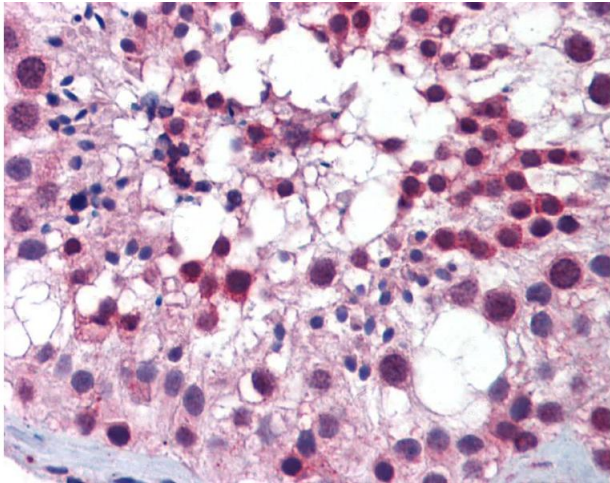
Handling

Format:	Liquid
Concentration:	Lot specific
Buffer:	Liquid. Purified antibody supplied in 1x PBS buffer with 0.09 % (w/v) sodium azide and 2 % sucrose.
Preservative:	Sodium azide
Precaution of Use:	This product contains Sodium azide: a POISONOUS AND HAZARDOUS SUBSTANCE which should be handled by trained staff only.

Handling

Handling Advice:	Avoid repeated freeze-thaw cycles.
Storage:	-20 °C
Storage Comment:	For short term use, store at 2-8°C up to 1 week. For long term storage, store at -20°C in small aliquots to prevent freeze-thaw cycles.

Images



Immunohistochemistry

Image 1.



Western Blotting

Image 2. Host: Mouse Target Name: PLK1 Sample Tissue: Mouse Heart Antibody Dilution: 1ug/ml



Western Blotting

Image 3. WB Suggested Anti-PLK1 Antibody Titration: 0.2-1 ug/ml ELISA Titer: 1:12500 Positive Control: Human Liver