

Datasheet for ABIN2782497

**anti-HIST1H1C antibody (Middle Region)**

## 4 Images

[Go to Product page](#)

## Overview

Quantity:	100 µL
Target:	HIST1H1C
Binding Specificity:	Middle Region
Reactivity:	Human, Mouse, Rat, Cow, Dog, Guinea Pig, Horse, Rabbit
Host:	Rabbit
Clonality:	Polyclonal
Conjugate:	This HIST1H1C antibody is un-conjugated
Application:	Western Blotting (WB), Chromatin Immunoprecipitation (ChIP)

## Product Details

Immunogen:	The immunogen is a synthetic peptide directed towards the middle region of human HIST1H1C
Sequence:	ASGSFKLNKK AASGEAKPKV KKAGGTKPKK PVGAACKPKK AAGGATPKKS
Predicted Reactivity:	Cow: 86%, Dog: 86%, Guinea Pig: 93%, Horse: 86%, Human: 100%, Mouse: 86%, Rabbit: 85%, Rat: 86%
Characteristics:	This is a rabbit polyclonal antibody against HIST1H1C. It was validated on Western Blot using a cell lysate as a positive control.
Purification:	Affinity Purified

## Target Details

Target:	HIST1H1C
---------	----------

## Target Details

Alternative Name: HIST1H1C ([HIST1H1C Products](#))

**Background:** Histones are basic nuclear proteins responsible for nucleosome structure of the chromosomal fiber in eukaryotes. Two molecules of each of the four core histones (H2A, H2B, H3, and H4) form an octamer, around which approximately 146 bp of DNA is wrapped in repeating units, called nucleosomes. The linker histone, H1, interacts with linker DNA between nucleosomes and functions in the compaction of chromatin into higher order structures. Histones are basic nuclear proteins responsible for nucleosome structure of the chromosomal fiber in eukaryotes. Two molecules of each of the four core histones (H2A, H2B, H3, and H4) form an octamer, around which approximately 146 bp of DNA is wrapped in repeating units, called nucleosomes. The linker histone, H1, interacts with linker DNA between nucleosomes and functions in the compaction of chromatin into higher order structures. This gene is intronless and encodes a member of the histone H1 family. Transcripts from this gene lack polyA tails but instead contain a palindromic termination element. This gene is found in the large histone gene cluster on chromosome 6. Publication Note: This RefSeq record includes a subset of the publications that are available for this gene. Please see the Entrez Gene record to access additional publications.

Alias Symbols: H1.2, H1F2, MGC3992, H1C

Protein Interaction Partner: UBC, CEP250, ATRX, HIST1H3A, LEO1, PAF1, CUL4A, POLR2A, MDM2, ASB16, ASB9, SUZ12, EED, RNF2, APEH, SEC24D, TBCD, PARK2, VHL, UBD, ICAM1, CD81, IGSF8, EIF2AK2, ITGA4, IL7R, CSNK2A2, SMURF1, HIST1H2AD, H1FX, COPS5, CAND1, CUL1, CUL2, CUL3, CUL4B, CUL5, NEDD

Protein Size: 213

Molecular Weight: 21 kDa

Gene ID: 3006

NCBI Accession: [NM\\_005319](#), [NP\\_005310](#)

UniProt: [P16403](#)

## Application Details

**Application Notes:** Optimal working dilutions should be determined experimentally by the investigator.

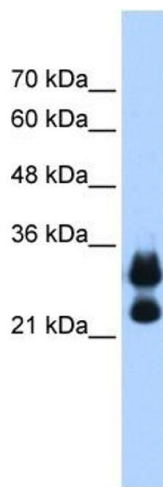
**Comment:** Antigen size: 213 AA

**Restrictions:** For Research Use only

## Handling

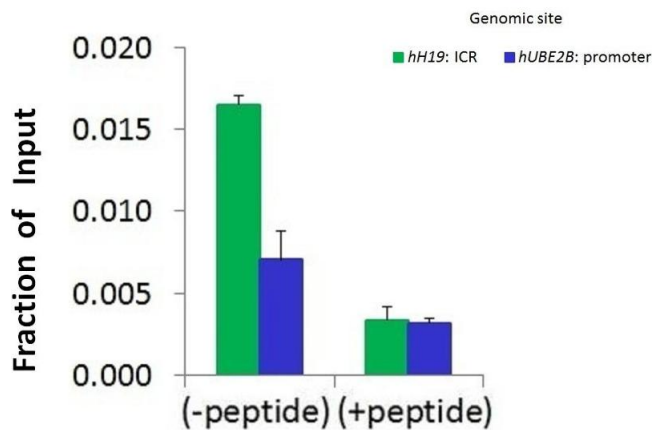
Format:	Liquid
Concentration:	Lot specific
Buffer:	Liquid. Purified antibody supplied in 1x PBS buffer with 0.09 % (w/v) sodium azide and 2 % sucrose.
Preservative:	Sodium azide
Precaution of Use:	This product contains Sodium azide: a POISONOUS AND HAZARDOUS SUBSTANCE which should be handled by trained staff only.
Handling Advice:	Avoid repeated freeze-thaw cycles.
Storage:	-20 °C
Storage Comment:	For short term use, store at 2-8°C up to 1 week. For long term storage, store at -20°C in small aliquots to prevent freeze-thaw cycles.

## Images



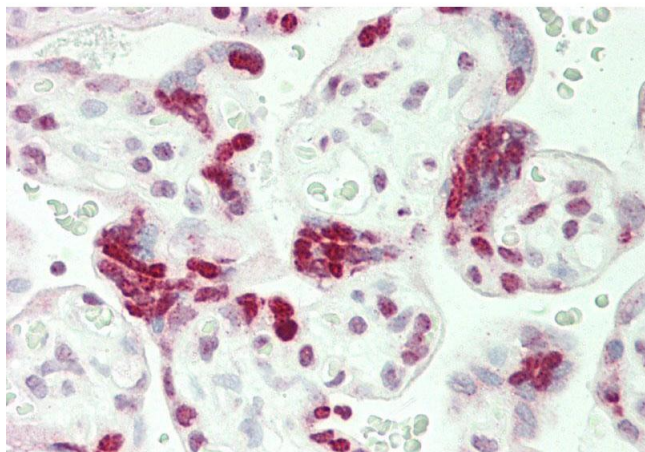
### Western Blotting

**Image 1.** WB Suggested Anti-HIST1H1C Antibody Titration: 0.2-1 ug/ml Positive Control: 721\_B cell lysate HIST1H1C is supported by BioGPS gene expression data to be expressed in 721\_B



### Chromatin Immunoprecipitation

**Image 2.** Chromatin Immunoprecipitation (ChIP) Using HIST1H1C antibody - middle region and HCT116 Cells



#### Immunohistochemistry

**Image 3.** Rabbit Anti-HIST1H1C antibody Formalin Fixed Paraffin Embedded Tissue: Human Placenta Primary antibody Concentration: 1:100 Secondary Antibody: Donkey anti-Rabbit-Cy3 Secondary Antibody Concentration: 1:200 Magnification: 20x Exposure Time: 0.5-2.0sec

Please check the [product details page](#) for more images. Overall 4 images are available for ABIN2782497.