

Datasheet for ABIN2782499
anti-MAGEA6 antibody (Middle Region)



[Go to Product page](#)

1 Image

Overview

Quantity:	100 µL
Target:	MAGEA6
Binding Specificity:	Middle Region
Reactivity:	Human, Mouse, Rat, Dog, Horse, Pig, Rabbit
Host:	Rabbit
Clonality:	Polyclonal
Conjugate:	This MAGEA6 antibody is un-conjugated
Application:	Western Blotting (WB)

Product Details

Immunogen:	The immunogen is a synthetic peptide directed towards the middle region of human MAGEA6
Sequence:	APEEKIWEEL SVLEVFEGRE DSIFGDPKKL LTQYFVQENY LEYRQVPGSD
Predicted Reactivity:	Dog: 83%, Horse: 83%, Human: 100%, Mouse: 83%, Pig: 83%, Rabbit: 83%, Rat: 83%
Characteristics:	This is a rabbit polyclonal antibody against MAGEA6. It was validated on Western Blot using a cell lysate as a positive control.
Purification:	Affinity Purified

Target Details

Target:	MAGEA6
Alternative Name:	MAGEA6 (MAGEA6 Products)

Target Details

Background: MAGEA6 gene is a member of the MAGEA gene family. The members of this family encode proteins with 50 to 80 % sequence identity to each other. The promoters and first exons of the MAGEA genes show considerable variability, suggesting that the existence of this gene family enables the same function to be expressed under different transcriptional controls. The MAGEA genes are clustered at chromosomal location Xq28. They have been implicated in some hereditary disorders, such as dyskeratosis congenita. This gene is a member of the MAGEA gene family. The members of this family encode proteins with 50 to 80 % sequence identity to each other. The promoters and first exons of the MAGEA genes show considerable variability, suggesting that the existence of this gene family enables the same function to be expressed under different transcriptional controls. The MAGEA genes are clustered at chromosomal location Xq28. They have been implicated in some hereditary disorders, such as dyskeratosis congenita. Two transcript variants encoding the same protein have been identified for this gene.

Alias Symbols: MAGE-3b, MAGE3B, MAGE6, MGC52297, CT1.6

Protein Interaction Partner: KLHL38, MORN3, LCORL, IQUB, MIPOL1, ANKRD26P1, SNAP47, HAUS1, ATPAF2, ELMOD3, RASSF4, SH2D4A, LSM2, CCDC146, STAMBPL1, S100A14, FAM214A, LIN37, RCOR3, GFOD1, FRMPD1, ACOT7, EXOC5, BET1, TXNDC9, AKAP9, ATP6V1G1, BCL7B, SNX4, NCK2, TULP3, STX5, RPL37A, PDE4

Protein Size: 314

Molecular Weight: 35 kDa

Gene ID: 4105

NCBI Accession: [NM_005363](#), [NP_005354](#)

UniProt: [P43360](#)

Application Details

Application Notes: Optimal working dilutions should be determined experimentally by the investigator.

Comment: Antigen size: 314 AA

Restrictions: For Research Use only

Handling

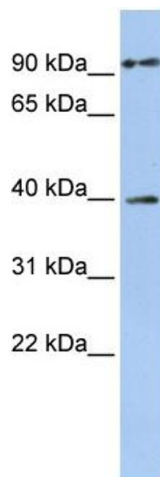
Format: Liquid

Concentration: Lot specific

Handling

Buffer:	Liquid. Purified antibody supplied in 1x PBS buffer with 0.09 % (w/v) sodium azide and 2 % sucrose.
Preservative:	Sodium azide
Precaution of Use:	This product contains Sodium azide: a POISONOUS AND HAZARDOUS SUBSTANCE which should be handled by trained staff only.
Handling Advice:	Avoid repeated freeze-thaw cycles.
Storage:	-20 °C
Storage Comment:	For short term use, store at 2-8°C up to 1 week. For long term storage, store at -20°C in small aliquots to prevent freeze-thaw cycles.

Images



Western Blotting

Image 1. WB Suggested Anti-MAGEA6 Antibody Titration: 0.2-1 ug/ml ELISA Titer: 1:312500 Positive Control: Jurkat cell lysate