



Datasheet for ABIN2782503
anti-SHMT2 antibody (C-Term)



[Go to Product page](#)

4 Images

Overview

Quantity:	100 µL
Target:	SHMT2
Binding Specificity:	C-Term
Reactivity:	Human, Mouse, Rat, Dog, Guinea Pig, Horse, Rabbit, Cow
Host:	Rabbit
Clonality:	Polyclonal
Conjugate:	This SHMT2 antibody is un-conjugated
Application:	Western Blotting (WB), Immunohistochemistry (IHC)

Product Details

Immunogen:	The immunogen is a synthetic peptide directed towards the C terminal region of human SHMT2
Sequence:	ELVSITANKN TCPGDRSAIT PGGLRLGAPA LTSRQFREDD FRRVDFIDE
Predicted Reactivity:	Cow: 86%, Dog: 100%, Guinea Pig: 100%, Horse: 100%, Human: 100%, Mouse: 100%, Rabbit: 100%, Rat: 100%
Characteristics:	This is a rabbit polyclonal antibody against SHMT2. It was validated on Western Blot and immunohistochemistry.
Purification:	Affinity Purified

Target Details

Target:	SHMT2
---------	-------

Target Details

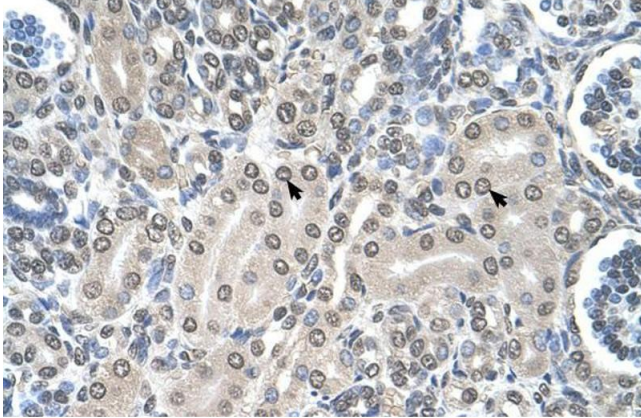
Alternative Name:	SHMT2 (SHMT2 Products)
Background:	SHMT2 plays a role in interconversion of serine and glycine. Alias Symbols: GLYA, SHMT Protein Interaction Partner: CMTM5, ARL6IP1, HUWE1, UBC, MDM2, PSMG3, TBC1D15, SNX6, CAND1, VPS35, LUC7L2, CYHR1, ARFIP1, GSPT2, JMJD6, IVNS1ABP, ATG7, SEC24D, H1FX, CUL5, STAT1, SNX1, SHMT1, PAWR, NASP, IDE, HIST1H1B, CTTN, ATP6V1C1, APEH, ADRB2, ATF2, APP, CUL1, CUL3, NDRG1, HDAC5, Protein Size: 504
Molecular Weight:	56 kDa
Gene ID:	6472
NCBI Accession:	NM_005412 , NP_005403
UniProt:	P34897

Application Details

Application Notes:	Optimal working dilutions should be determined experimentally by the investigator.
Comment:	Antigen size: 504 AA
Restrictions:	For Research Use only

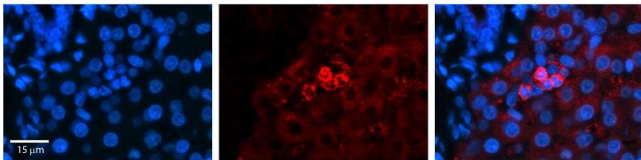
Handling

Format:	Liquid
Concentration:	Lot specific
Buffer:	Liquid. Purified antibody supplied in 1x PBS buffer with 0.09 % (w/v) sodium azide and 2 % sucrose.
Preservative:	Sodium azide
Precaution of Use:	This product contains Sodium azide: a POISONOUS AND HAZARDOUS SUBSTANCE which should be handled by trained staff only.
Handling Advice:	Avoid repeated freeze-thaw cycles.
Storage:	-20 °C
Storage Comment:	For short term use, store at 2-8°C up to 1 week. For long term storage, store at -20°C in small aliquots to prevent freeze-thaw cycles.



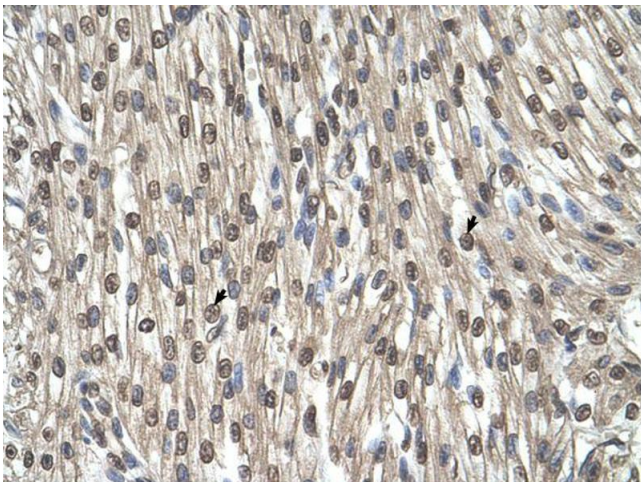
Immunohistochemistry

Image 1. Human kidney



Immunohistochemistry

Image 2. SHMT2 antibody - C-terminal region Formalin Fixed Paraffin Embedded Tissue: Human Liver Tissue Observed Staining: Cytoplasm in Kupffer cells Primary Antibody Concentration: 1:600 Secondary Antibody: Donkey anti-Rabbit-Cy3 Secondary Antibody Concentration: 1:200 Magnification: 20X Exposure Time: 0.5 - 2.0 sec



Immunohistochemistry

Image 3.

Please check the [product details page](#) for more images. Overall 4 images are available for ABIN2782503.