



[Go to Product page](#)

Datasheet for ABIN2782511  
**anti-PSME3 antibody (N-Term)**

4 Images

Overview

Quantity:	100 µL
Target:	PSME3
Binding Specificity:	N-Term
Reactivity:	Human, Rat, Mouse, Dog, Cow, Rabbit, Guinea Pig, Horse
Host:	Rabbit
Clonality:	Polyclonal
Conjugate:	This PSME3 antibody is un-conjugated
Application:	Western Blotting (WB), Immunohistochemistry (IHC)

Product Details

Immunogen:	The immunogen is a synthetic peptide directed towards the N-terminal region of Human PSME3
Sequence:	PILNIHDLTQ IHSDMNL PVP DPILLTNSHD GLDGPTYKKR RLDECEEFQ
Predicted Reactivity:	Cow: 100%, Dog: 100%, Guinea Pig: 100%, Horse: 100%, Human: 100%, Mouse: 100%, Rabbit: 100%, Rat: 100%
Characteristics:	This is a rabbit polyclonal antibody against PSME3. It was validated on Western Blot.
Purification:	Affinity Purified

Target Details

Target:	PSME3
---------	-------

## Target Details

---

Alternative Name: PSME3 ([PSME3 Products](#))

---

Background: The 26S proteasome is a multicatalytic proteinase complex with a highly ordered structure composed of 2 complexes, a 20S core and a 19S regulator. Proteasomes are distributed throughout eukaryotic cells at a high concentration and cleave peptides in an ATP/ubiquitin-dependent process in a non-lysosomal pathway. An essential function of a modified proteasome, the immunoproteasome, is the processing of class I MHC peptides. The immunoproteasome contains an alternate regulator, referred to as the 11S regulator or PA28, that replaces the 19S regulator. Three subunits (alpha, beta and gamma) of the 11S regulator have been identified. PSME3 is the gamma subunit of the 11S regulator. Six gamma subunits combine to form a homohexameric ring.

Alias Symbols: Ki, PA28-gamma, PA28G, REG-GAMMA

Protein Interaction Partner: SPG7, PRKAB2, PFDN5, BBS2, TNFAIP8L1, EAF1, ZCCHC10, PRR13, TXN2, FBXO7, DIP2A, PSME3, HUWE1, TUBGCP3, SIRT1, CREBBP, PSMD14, SHFM1, GTPBP4, MDM2, ADARB2, C1QBP, PARK2, CLK3, CLK2, YWHAQ, TBXA2R, BAG3, NPM1, ITGA4, CBX2, vpr, vif, HCVgp1, CBX4, VCAM1, UBC

Protein Size: 267

---

Molecular Weight: 31 kDa

---

Gene ID: 10197

---

NCBI Accession: [NM\\_176863](#), [NP\\_789839](#)

---

Pathways: [Mitotic G1-G1/S Phases](#), [DNA Replication](#), [Positive Regulation of Endopeptidase Activity](#), [Hepatitis C](#), [Synthesis of DNA](#)

---

## Application Details

---

Application Notes: Optimal working dilutions should be determined experimentally by the investigator.

---

Comment: Antigen size: 267 AA

---

Restrictions: For Research Use only

---

## Handling

---

Format: Liquid

---

Concentration: Lot specific

---

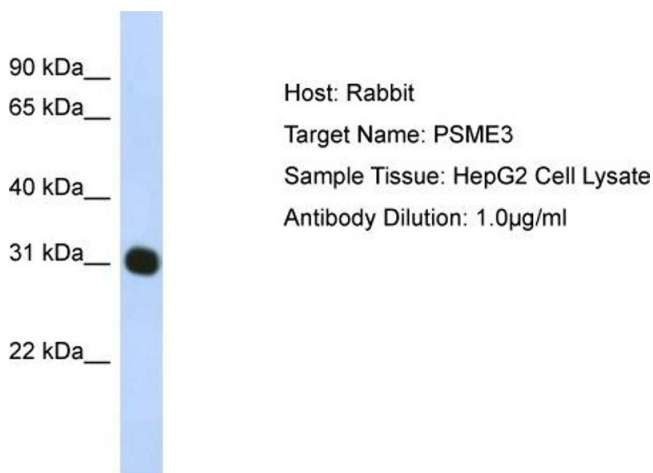
Buffer: Liquid. Purified antibody supplied in 1x PBS buffer with 0.09 % (w/v) sodium azide and 2 % sucrose.

---

## Handling

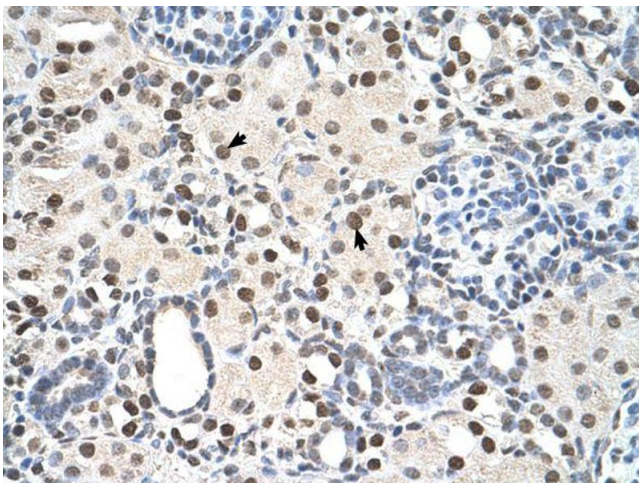
Preservative:	Sodium azide
Precaution of Use:	This product contains Sodium azide: a POISONOUS AND HAZARDOUS SUBSTANCE which should be handled by trained staff only.
Handling Advice:	Avoid repeated freeze-thaw cycles.
Storage:	-20 °C
Storage Comment:	For short term use, store at 2-8°C up to 1 week. For long term storage, store at -20°C in small aliquots to prevent freeze-thaw cycles.

## Images



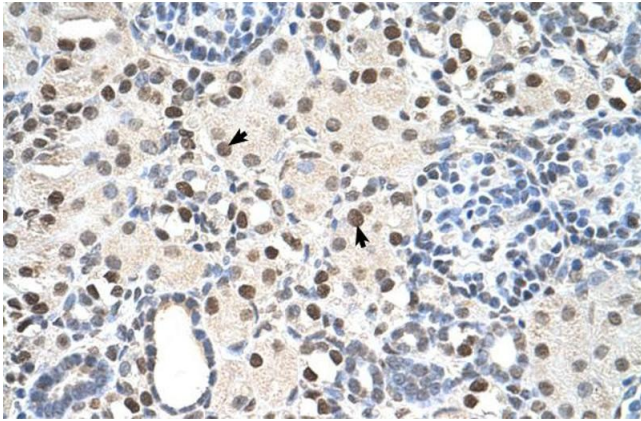
### Western Blotting

**Image 1.** WB Suggested Anti-PSME3 Antibody Titration: 1 ug/ml Positive Control: HepG2 cell lysate PSME3 is strongly supported by BioGPS gene expression data to be expressed in Human HepG2 cells



### Immunohistochemistry

**Image 2.** Immunohistochemistry with Tonsil tissue at an antibody concentration of 5µg/ml using anti-PSME3 antibody (ARP46142\_P050)



### Immunohistochemistry

**Image 3.** Rabbit Anti-PSME3 Antibody Paraffin Embedded Tissue: Human Kidney Cellular Data: Epithelial cells of renal tubule Antibody Concentration: 4.0-8.0 ug/ml Magnification: 400X

Please check the [product details page](#) for more images. Overall 4 images are available for ABIN2782511.