

Datasheet for ABIN2782525
anti-IFI44L antibody (N-Term)



[Go to Product page](#)

3 Images

1 Publication

Overview

Quantity:	100 µL
Target:	IFI44L
Binding Specificity:	N-Term
Reactivity:	Human
Host:	Rabbit
Clonality:	Polyclonal
Conjugate:	This IFI44L antibody is un-conjugated
Application:	Western Blotting (WB), Immunohistochemistry (IHC)

Product Details

Immunogen:	The immunogen is a synthetic peptide directed towards the N terminal region of human IFI44L
Sequence:	MEVTTRLTWN DENHLRKLGG NVLSLLYKS SVHGGSIEDM VERCSRQGCT
Predicted Reactivity:	Human: 100%
Characteristics:	This is a rabbit polyclonal antibody against IFI44L. It was validated on Western Blot and immunohistochemistry.
Purification:	Protein A purified

Target Details

Target:	IFI44L
Alternative Name:	IFI44L (IFI44L Products)

Target Details

Background: The function remains known.
Alias Symbols: C1orf29, GS3686
Protein Size: 413

Molecular Weight: 47 kDa

Gene ID: 10964

NCBI Accession: [NM_006820](#), [NP_006811](#)

UniProt: [Q99984](#)

Application Details

Application Notes: Optimal working dilutions should be determined experimentally by the investigator.

Comment: Antigen size: 413 AA

Restrictions: For Research Use only

Handling

Format: Liquid

Concentration: Lot specific

Buffer: Liquid. Purified antibody supplied in 1x PBS buffer with 0.09 % (w/v) sodium azide and 2 % sucrose.

Preservative: Sodium azide

Precaution of Use: This product contains Sodium azide: a POISONOUS AND HAZARDOUS SUBSTANCE which should be handled by trained staff only.

Handling Advice: Avoid repeated freeze-thaw cycles.

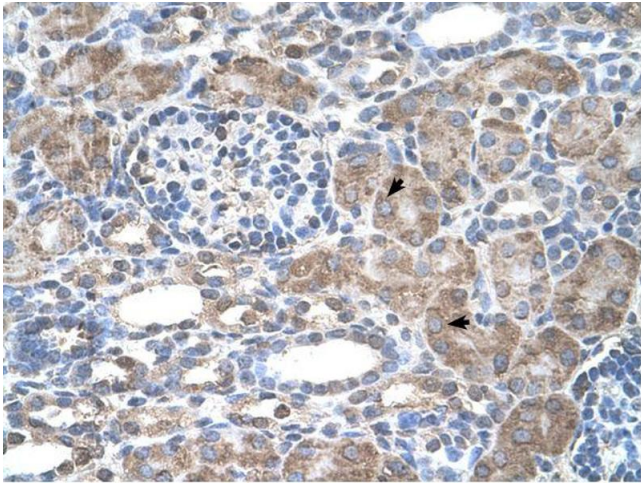
Storage: -20 °C

Storage Comment: For short term use, store at 2-8°C up to 1 week. For long term storage, store at -20°C in small aliquots to prevent freeze-thaw cycles.

Publications

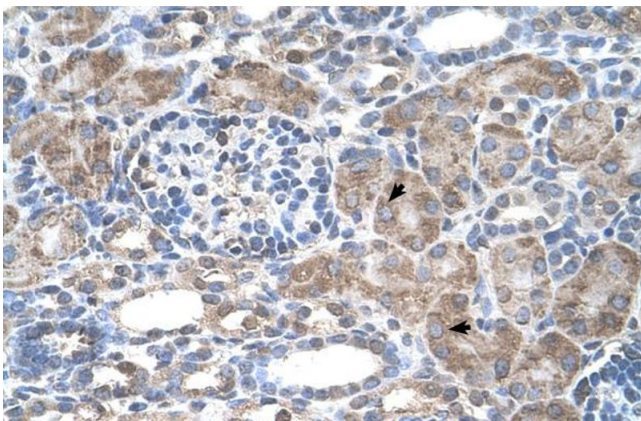
Product cited in: Suzuki, Yoshitomo-Nakagawa, Maruyama, Suyama, Sugano: "Construction and characterization of a full length-enriched and a 5'-end-enriched cDNA library." in: **Gene**, Vol. 200, Issue 1-2, pp. 149-56, (1997) ([PubMed](#)).

Images



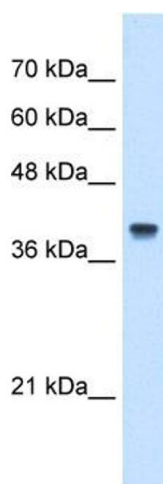
Immunohistochemistry

Image 1.



Immunohistochemistry

Image 2. Human kidney



Western Blotting

Image 3. WB Suggested Anti-IFI44L Antibody Titration:
5.0ug/ml Positive Control: Jurkat cell lysate