



[Go to Product page](#)

Datasheet for ABIN2782533

anti-MRPL15 antibody (C-Term)

1 Image

1 Publication

Overview

Quantity:	100 µL
Target:	MRPL15
Binding Specificity:	C-Term
Reactivity:	Human, Mouse, Rat, Dog, Rabbit, Zebrafish (Danio rerio), Cow, Guinea Pig, Horse, Pig
Host:	Rabbit
Clonality:	Polyclonal
Conjugate:	This MRPL15 antibody is un-conjugated
Application:	Western Blotting (WB)

Product Details

Immunogen:	The immunogen is a synthetic peptide directed towards the C terminal region of human MRPL15
Sequence:	KDELFKMLCT RKDPRQIFFG LAPGWVVNMA DKKILKPTDE NLLKYYTS
Predicted Reactivity:	Cow: 92%, Dog: 100%, Guinea Pig: 79%, Horse: 86%, Human: 100%, Mouse: 100%, Pig: 100%, Rabbit: 100%, Rat: 86%, Zebrafish: 77%
Characteristics:	This is a rabbit polyclonal antibody against MRPL15. It was validated on Western Blot using a cell lysate as a positive control.
Purification:	Affinity Purified

Target Details

Target:	MRPL15
---------	--------

Target Details

Alternative Name: [MRPL15 \(MRPL15 Products\)](#)

Background: Mammalian mitochondrial ribosomal proteins are encoded by nuclear genes and help in protein synthesis within the mitochondrion. Mitochondrial ribosomes (mitoribosomes) consist of a small 28S subunit and a large 39S subunit. MRPL15 belongs to the ribosomal protein L15P family. It is a 39S subunit protein that belongs to the EcoL15 ribosomal protein family. Mammalian mitochondrial ribosomal proteins are encoded by nuclear genes and help in protein synthesis within the mitochondrion. Mitochondrial ribosomes (mitoribosomes) consist of a small 28S subunit and a large 39S subunit. They have an estimated 75 % protein to rRNA composition compared to prokaryotic ribosomes, where this ratio is reversed. Another difference between mammalian mitoribosomes and prokaryotic ribosomes is that the latter contain a 5S rRNA. Among different species, the proteins comprising the mitoribosome differ greatly in sequence, and sometimes in biochemical properties, which prevents easy recognition by sequence homology. This gene encodes a 39S subunit protein that belongs to the EcoL15 ribosomal protein family. A pseudogene corresponding to this gene is found on chromosome 15q.

Alias Symbols: HSPC145, MRP-L7, RPML7, L15mt, MRP-L15

Protein Interaction Partner: CCNDBP1, RUNDC3A, UBC, SOX2, MRPL55, MRPL10, MRPL45, TMEM177, MRPL57, MRPL9, MRPL11, MRPL32, MRPL38, MRPL40, MRPL14, MARC1, NDUFA12, MRPL16, MRPL50, MRPL39, MRPL4, MRPL13, FKBP8, SCFD1, MRPL19, EIF3C, MRPL12, OGDH, NDUFS4, ILF3, DLST, CYC1, COX15, CAND1,

Protein Size: 296

Molecular Weight: 33 kDa

Gene ID: 29088

NCBI Accession: [NM_014175](#), [NP_054894](#)

UniProt: [Q9P015](#)

Application Details

Application Notes: Optimal working dilutions should be determined experimentally by the investigator.

Comment: Antigen size: 296 AA

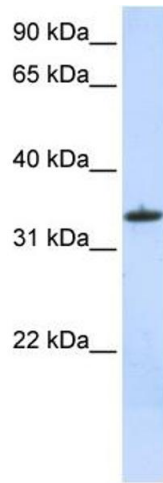
Restrictions: For Research Use only

Handling

Format:	Liquid
Concentration:	Lot specific
Buffer:	Liquid. Purified antibody supplied in 1x PBS buffer with 0.09 % (w/v) sodium azide and 2 % sucrose.
Preservative:	Sodium azide
Precaution of Use:	This product contains Sodium azide: a POISONOUS AND HAZARDOUS SUBSTANCE which should be handled by trained staff only.
Handling Advice:	Avoid repeated freeze-thaw cycles.
Storage:	-20 °C
Storage Comment:	For short term use, store at 2-8°C up to 1 week. For long term storage, store at -20°C in small aliquots to prevent freeze-thaw cycles.

Publications

Product cited in:	<p>Rayegan, Dehpour, Sharifi: "Studying neuroprotective effect of Atorvastatin as a small molecule drug on high glucose-induced neurotoxicity in undifferentiated PC12 cells: role of NADPH oxidase." in: Metabolic brain disease, Vol. 32, Issue 1, pp. 41-49, (2016) (PubMed).</p> <p>Kuwano, Kawahara, Yamamoto, Teshima-Kondo, Tominaga, Masuda, Kishi, Morita, Rokutan: "Interferon-gamma activates transcription of NADPH oxidase 1 gene and upregulates production of superoxide anion by human large intestinal epithelial cells." in: American journal of physiology. Cell physiology, Vol. 290, Issue 2, pp. C433-43, (2006) (PubMed).</p>
-------------------	--



Western Blotting

Image 1. WB Suggested Anti-MRPL15 Antibody Titration: 0.2-1 ug/ml ELISA Titer: 1:62500 Positive Control: MCF7 cell lysate MRPL15 is supported by BioGPS gene expression data to be expressed in MCF7