



[Go to Product page](#)

Datasheet for ABIN2782536

anti-Malectin antibody (C-Term)

2 Images

Overview

Quantity:	100 µL
Target:	Malectin (MLEC)
Binding Specificity:	C-Term
Reactivity:	Human, Pig, Rabbit, Cow, Dog, Horse, Mouse, Rat, Zebrafish (Danio rerio)
Host:	Rabbit
Clonality:	Polyclonal
Conjugate:	This Malectin antibody is un-conjugated
Application:	Western Blotting (WB)

Product Details

Immunogen:	The immunogen is a synthetic peptide directed towards the C terminal region of human KIAA0152
Sequence:	TVDDVPKLQP HPGLEKKEEE EEEEEYDEGS NLKKQTNKNR VQSGPRTPNP
Predicted Reactivity:	Cow: 100%, Dog: 100%, Horse: 100%, Human: 100%, Mouse: 100%, Pig: 100%, Rabbit: 100%, Rat: 100%, Zebrafish: 93%
Characteristics:	This is a rabbit polyclonal antibody against KIAA0152. It was validated on Western Blot.
Purification:	Affinity Purified

Target Details

Target:	Malectin (MLEC)
---------	-----------------

Target Details

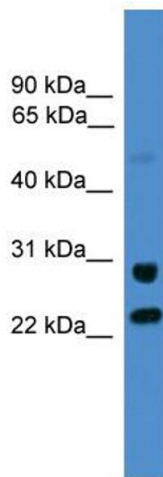
Alternative Name:	KIAA0152 (MLEC Products)
Background:	<p>KIAA0152 is a carbohydrate-binding protein with a strong ligand preference for Glc2-N-glycan. KIAA0152 may play a role in the early steps of protein N-glycosylation.</p> <p>Alias Symbols: KIAA0152</p> <p>Protein Interaction Partner: UBC, RPS16, ELAVL1,</p> <p>Protein Size: 292</p>
Molecular Weight:	32 kDa
Gene ID:	9761
NCBI Accession:	NM_014730 , NP_055545
UniProt:	Q14165

Application Details

Application Notes:	Optimal working dilutions should be determined experimentally by the investigator.
Comment:	Antigen size: 292 AA
Restrictions:	For Research Use only

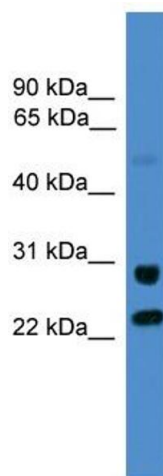
Handling

Format:	Liquid
Concentration:	Lot specific
Buffer:	Liquid. Purified antibody supplied in 1x PBS buffer with 0.09 % (w/v) sodium azide and 2 % sucrose.
Preservative:	Sodium azide
Precaution of Use:	This product contains Sodium azide: a POISONOUS AND HAZARDOUS SUBSTANCE which should be handled by trained staff only.
Handling Advice:	Avoid repeated freeze-thaw cycles.
Storage:	-20 °C
Storage Comment:	For short term use, store at 2-8°C up to 1 week. For long term storage, store at -20°C in small aliquots to prevent freeze-thaw cycles.



Western Blotting

Image 1. WB Suggested Anti-KIAA0152 Antibody Titration: 0.2-1 ug/ml ELISA Titer: 1:312500 Positive Control: 721_B cell lysate MLEC is strongly supported by BioGPS gene expression data to be expressed in Human 721_B cells



Western Blotting

Image 2. WB Suggested Anti-KIAA0152 Antibody Titration: 0.2-1 µg/mL ELISA Titer: 1:12500 Positive Control: 21_B cell lysate MLEC is strongly supported by BioGPS gene expression data to be expressed in Human 721_B cells