

Datasheet for ABIN2782547
anti-NCAPH antibody (N-Term)

3 Images

[Go to Product page](#)

Overview

Quantity:	100 µL
Target:	NCAPH
Binding Specificity:	N-Term
Reactivity:	Human, Rat, Mouse, Cow, Dog, Guinea Pig, Horse, Rabbit
Host:	Rabbit
Clonality:	Polyclonal
Conjugate:	This NCAPH antibody is un-conjugated
Application:	Western Blotting (WB)

Product Details

Immunogen:	The immunogen is a synthetic peptide directed towards the N terminal region of human NCAPH
Sequence:	MPLPRKAPLN IPGTPVLEDF PQNDDEKERL QRRRSRVFDL QFSTDSPRL
Predicted Reactivity:	Cow: 100%, Dog: 100%, Guinea Pig: 100%, Horse: 93%, Human: 100%, Mouse: 100%, Rabbit: 93%, Rat: 100%
Characteristics:	This is a rabbit polyclonal antibody against NCAPH. It was validated on Western Blot using a cell lysate as a positive control.
Purification:	Affinity Purified

Target Details

Target:	NCAPH
---------	-------

Target Details

Alternative Name:	NCAPH (NCAPH Products)
Background:	<p>NCAPH is a member of the barr family and a regulatory subunit of the condensin complex. This complex is required for the conversion of interphase chromatin into condensed chromosomes. The protein is associated with mitotic chromosomes, except during the early phase of chromosome condensation. During interphase, the protein has a distinct punctate nucleolar localization. This gene encodes a member of the barr gene family and a regulatory subunit of the condensin complex. This complex is required for the conversion of interphase chromatin into condensed chromosomes. The protein encoded by this gene is associated with mitotic chromosomes, except during the early phase of chromosome condensation. During interphase, the protein has a distinct punctate nucleolar localization.</p> <p>Alias Symbols: BRRN1, CAP-H, HCAP-H</p> <p>Protein Interaction Partner: SUMO2, UBC, RNF2, HECTD3, NCAPG, ZZEF1, SMC2, SMC4, NCAPD2, GBF1, PLEC, LMNB1, VCP, CDK1, ark1, AURKB, HIST2H2AC, H2AFZ, tat, CAPG, Protein Size: 741</p>
Molecular Weight:	82 kDa
Gene ID:	23397
NCBI Accession:	NM_015341 , NP_056156
UniProt:	Q15003

Application Details

Application Notes:	Optimal working dilutions should be determined experimentally by the investigator.
Comment:	Antigen size: 741 AA
Restrictions:	For Research Use only

Handling

Format:	Liquid
Concentration:	Lot specific
Buffer:	Liquid. Purified antibody supplied in 1x PBS buffer with 0.09 % (w/v) sodium azide and 2 % sucrose.
Preservative:	Sodium azide
Precaution of Use:	This product contains Sodium azide: a POISONOUS AND HAZARDOUS SUBSTANCE which

Handling

	should be handled by trained staff only.
Handling Advice:	Avoid repeated freeze-thaw cycles.
Storage:	-20 °C
Storage Comment:	For short term use, store at 2-8°C up to 1 week. For long term storage, store at -20°C in small aliquots to prevent freeze-thaw cycles.

Images

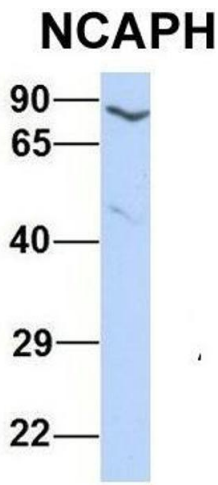


Western Blotting

Image 1. WB Suggested Anti-NCAPH Antibody Titration: 0.2-1 ug/ml ELISA Titer: 1:62500 Positive Control: HepG2 cell lysate NCAPH is supported by BioGPS gene expression data to be expressed in HepG2

Western Blotting

Image 2. Host: Rabbit Target Name: NCAPH Sample Type: Human Jurkat Antibody Dilution: 1.0ug/ml NCAPH is supported by BioGPS gene expression data to be expressed in Jurkat



Western Blotting

Image 3. Host: Rabbit Target Name: NCAPH Sample Type: Human MCF7 Antibody Dilution: 1.0ug/ml NCAPH is supported by BioGPS gene expression data to be expressed in MCF7