

Datasheet for ABIN2782549
anti-ICEF1 antibody (Middle Region)[Go to Product page](#)

1 Image

Overview

Quantity:	100 µL
Target:	ICEF1 (IPCEF1)
Binding Specificity:	Middle Region
Reactivity:	Human, Mouse, Rat, Rabbit, Cow, Dog, Guinea Pig, Horse
Host:	Rabbit
Clonality:	Polyclonal
Conjugate:	This ICEF1 antibody is un-conjugated
Application:	Western Blotting (WB)

Product Details

Immunogen:	The immunogen is a synthetic peptide directed towards the middle region of human PIP3-E
Sequence:	IHKALENSFV TSESGFLNSL SSDDTSSLSS NHDHLTVDPK PAGSKIMDK
Predicted Reactivity:	Cow: 93%, Dog: 93%, Guinea Pig: 86%, Horse: 93%, Human: 100%, Mouse: 79%, Rabbit: 93%, Rat: 93%
Characteristics:	This is a rabbit polyclonal antibody against PIP3-E. It was validated on Western Blot using a cell lysate as a positive control.
Purification:	Affinity Purified

Target Details

Target:	ICEF1 (IPCEF1)
---------	----------------

Target Details

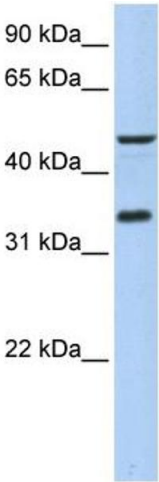
Alternative Name:	PIP3-E (IPCEF1 Products)
Background:	<p>PIP3-E enhances the promotion of guanine-nucleotide exchange by PSCD2 on ARF6 in a concentration-dependent manner.</p> <p>Alias Symbols: IPCEF1, KIAA0403, RP3-402L9.2, PIP3-E</p> <p>Protein Interaction Partner: CYTH2, CYTH4, CYTH1, CYTH3,</p> <p>Protein Size: 437</p>
Molecular Weight:	49 kDa
Gene ID:	26034
NCBI Accession:	NM_015553 , NP_056368
UniProt:	Q8WWN9

Application Details

Application Notes:	Optimal working dilutions should be determined experimentally by the investigator.
Comment:	Antigen size: 437 AA
Restrictions:	For Research Use only

Handling

Format:	Liquid
Concentration:	Lot specific
Buffer:	Liquid. Purified antibody supplied in 1x PBS buffer with 0.09 % (w/v) sodium azide and 2 % sucrose.
Preservative:	Sodium azide
Precaution of Use:	This product contains Sodium azide: a POISONOUS AND HAZARDOUS SUBSTANCE which should be handled by trained staff only.
Handling Advice:	Avoid repeated freeze-thaw cycles.
Storage:	-20 °C
Storage Comment:	For short term use, store at 2-8°C up to 1 week. For long term storage, store at -20°C in small aliquots to prevent freeze-thaw cycles.



Western Blotting

Image 1. WB Suggested Anti-PIP3-E Antibody Titration:
0.2-1 ug/ml Positive Control: 721_B cell lysate IPCEF1 is supported by BioGPS gene expression data to be expressed in 721_B