

Datasheet for ABIN2782553
anti-FAM82B antibody (N-Term)[Go to Product page](#)

1 Image

Overview

Quantity:	100 µL
Target:	FAM82B (RMDN1)
Binding Specificity:	N-Term
Reactivity:	Human
Host:	Rabbit
Clonality:	Polyclonal
Conjugate:	This FAM82B antibody is un-conjugated
Application:	Western Blotting (WB)

Product Details

Immunogen:	The immunogen is a synthetic peptide directed towards the N terminal region of human FAM82B
Sequence:	MALAARLWRL LPFRRGAAPG SRLPAGTSGS RGHCGPCRFR GFEVMGNPGT
Predicted Reactivity:	Human: 100%
Characteristics:	This is a rabbit polyclonal antibody against FAM82B. It was validated on Western Blot using a cell lysate as a positive control.
Purification:	Affinity Purified

Target Details

Target:	FAM82B (RMDN1)
---------	----------------

Target Details

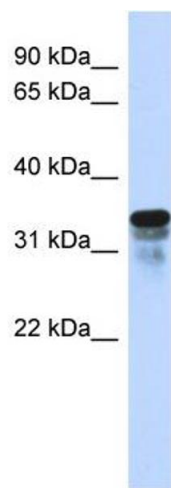
Alternative Name:	FAM82B (RMDN1 Products)
Background:	<p>The specific function of FAM82B is not yet known.</p> <p>Alias Symbols: CGI-90, FLJ20665, RMD1, RMD-1, FAM82B</p> <p>Protein Interaction Partner: UBC, VKORC1, MINOS1, H2AFX,</p> <p>Protein Size: 314</p>
Molecular Weight:	36 kDa
Gene ID:	51115
NCBI Accession:	NM_016033 , NP_057117
UniProt:	Q96DB5

Application Details

Application Notes:	Optimal working dilutions should be determined experimentally by the investigator.
Comment:	Antigen size: 314 AA
Restrictions:	For Research Use only

Handling

Format:	Liquid
Concentration:	Lot specific
Buffer:	Liquid. Purified antibody supplied in 1x PBS buffer with 0.09 % (w/v) sodium azide and 2 % sucrose.
Preservative:	Sodium azide
Precaution of Use:	This product contains Sodium azide: a POISONOUS AND HAZARDOUS SUBSTANCE which should be handled by trained staff only.
Handling Advice:	Avoid repeated freeze-thaw cycles.
Storage:	-20 °C
Storage Comment:	For short term use, store at 2-8°C up to 1 week. For long term storage, store at -20°C in small aliquots to prevent freeze-thaw cycles.



Western Blotting

Image 1. WB Suggested Anti-FAM82B Antibody Titration:
0.2-1 ug/ml ELISA Titer: 1:62500 Positive Control:
Transfected 293T