

Datasheet for ABIN2782555  
**anti-GINS2 antibody (N-Term)**[Go to Product page](#)

## 1 Image

## Overview

Quantity:	100 µL
Target:	GINS2
Binding Specificity:	N-Term
Reactivity:	Human, Mouse, Rat, Cow, Dog, Horse, Guinea Pig, Pig, Zebrafish (Danio rerio)
Host:	Rabbit
Clonality:	Polyclonal
Conjugate:	This GINS2 antibody is un-conjugated
Application:	Western Blotting (WB)

## Product Details

Immunogen:	The immunogen is a synthetic peptide directed towards the N terminal region of human GINS2
Sequence:	DAAEVEFLAE KELVTIIPNF SLDKIYLIGG DLGPFNPGLP VEVPLWLAIN
Predicted Reactivity:	Cow: 93%, Dog: 100%, Guinea Pig: 86%, Horse: 92%, Human: 100%, Mouse: 93%, Pig: 93%, Rat: 93%, Zebrafish: 100%
Characteristics:	This is a rabbit polyclonal antibody against GINS2. It was validated on Western Blot using a cell lysate as a positive control.
Purification:	Affinity Purified

## Target Details

Target:	GINS2
---------	-------

## Target Details

Alternative Name:	GINS2 ( <a href="#">GINS2 Products</a> )
Background:	<p>The yeast heterotetrameric GINS complex is made up of Sld5, Psf1, Psf2, and Psf3. The formation of this complex is essential for the initiation of DNA replication in yeast and Xenopus egg extracts. The yeast heterotetrameric GINS complex is made up of Sld5 (GINS4, MIM 610611), Psf1 (GINS1, MIM 610608), Psf2, and Psf3 (GINS3, MIM 610610). The formation of this complex is essential for the initiation of DNA replication in yeast and Xenopus egg extracts (Ueno et al., 2005 [PubMed 16287864]). See GINS1 for additional information about the GINS complex.[supplied by OMIM].</p> <p>Alias Symbols: HSPC037, PSF2, Pfs2</p> <p>Protein Interaction Partner: GINS4, CNDP2, FERMT2, AHSA1, EIF4H, RPS6KA1, CTSA, PEPD, MVD, GSR, EEF2, CASP7, CAPN1, UBC, GINS3, GINS1, FANCF, CHEK2,</p> <p>Protein Size: 185</p>
Molecular Weight:	21 kDa
Gene ID:	51659
NCBI Accession:	<a href="#">NM_016095</a> , <a href="#">NP_057179</a>
UniProt:	<a href="#">Q9Y248</a>
Pathways:	<a href="#">DNA Replication</a> , <a href="#">Synthesis of DNA</a>

## Application Details

Application Notes:	Optimal working dilutions should be determined experimentally by the investigator.
Comment:	Antigen size: 185 AA
Restrictions:	For Research Use only

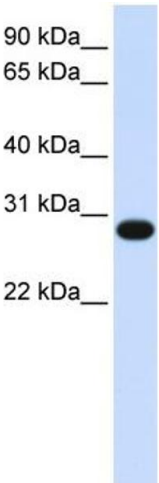
## Handling

Format:	Liquid
Concentration:	Lot specific
Buffer:	Liquid. Purified antibody supplied in 1x PBS buffer with 0.09 % (w/v) sodium azide and 2 % sucrose.
Preservative:	Sodium azide
Precaution of Use:	This product contains Sodium azide: a POISONOUS AND HAZARDOUS SUBSTANCE which should be handled by trained staff only.

## Handling

Handling Advice:	Avoid repeated freeze-thaw cycles.
Storage:	-20 °C
Storage Comment:	For short term use, store at 2-8°C up to 1 week. For long term storage, store at -20°C in small aliquots to prevent freeze-thaw cycles.

## Images



### Western Blotting

**Image 1.** WB Suggested Anti-GINS2 Antibody Titration: 0.2-1 ug/ml ELISA Titer: 1:312500 Positive Control: Human Muscle