

Datasheet for ABIN2782558
anti-WBP11 antibody (N-Term)

5 Images

[Go to Product page](#)

Overview

Quantity:	100 µL
Target:	WBP11
Binding Specificity:	N-Term
Reactivity:	Human, Mouse, Rat, Dog, Guinea Pig, Horse, Rabbit, Zebrafish (Danio rerio), Cow
Host:	Rabbit
Clonality:	Polyclonal
Conjugate:	This WBP11 antibody is un-conjugated
Application:	Western Blotting (WB), Immunoprecipitation (IP), Immunohistochemistry (IHC)

Product Details

Immunogen:	The immunogen is a synthetic peptide directed towards the N terminal region of human WBP11
Sequence:	GRRSTSSTKS GKFMNPTDQA RKEARKRELK KNKKQRMMVR AAVLKMKDPK
Predicted Reactivity:	Cow: 93%, Dog: 100%, Guinea Pig: 100%, Horse: 100%, Human: 100%, Mouse: 100%, Rabbit: 100%, Rat: 100%, Zebrafish: 100%
Characteristics:	This is a rabbit polyclonal antibody against WBP11. It was validated on Western Blot using a cell lysate as a positive control.
Purification:	Affinity Purified

Target Details

Target:	WBP11
---------	-------

Target Details

Alternative Name:	WBP11 (WBP11 Products)
Background:	<p>WBP11 is a nuclear protein, which colocalizes with mRNA splicing factors and intermediate filament-containing perinuclear networks. WBP11 has 95 % amino acid sequence identity to the mouse Wbp11 protein. It contains two proline-rich regions that bind to the WW domain of Npw38, a nuclear protein, and thus this protein is also called Npw38-binding protein NpwBP. The Npw38-NpwBP complex may function as a component of an mRNA factory in the nucleus. This gene encodes a nuclear protein, which colocalizes with mRNA splicing factors and intermediate filament-containing perinuclear networks. This protein has 95 % amino acid sequence identity to the mouse Wbp11 protein. It contains two proline-rich regions that bind to the WW domain of Npw38, a nuclear protein, and thus this protein is also called Npw38-binding protein NpwBP. The Npw38-NpwBP complex may function as a component of an mRNA factory in the nucleus.</p> <p>Alias Symbols: DKFZp779M1063, NPWBP, SIPP1, WBP-11</p> <p>Protein Interaction Partner: TESC, TRAF4, GRB2, FYN, UBC, BMI1, APBB1, WBP4, HECW2, DDX17, RBM5, PPP1CA, DDX5, CTNNBL1, PPP1CC, UPF3B, ZC3H13, CPSF6, SNRPB2, PQBP1, CD2BP2, SF3A2, ITSN1, RTN4IP1, PPP1CB, GIGYF2, MCRS1, PRPF40A, C5orf22, NCK2, TRIP10, NCF1, VIM, SRC, PIK3R1, RUNX1T1,</p> <p>Protein Size: 641</p>
Molecular Weight:	70 kDa
Gene ID:	51729
NCBI Accession:	NM_016312 , NP_057396
UniProt:	Q9Y2W2

Application Details

Application Notes:	Optimal working dilutions should be determined experimentally by the investigator.
Comment:	Antigen size: 641 AA
Restrictions:	For Research Use only

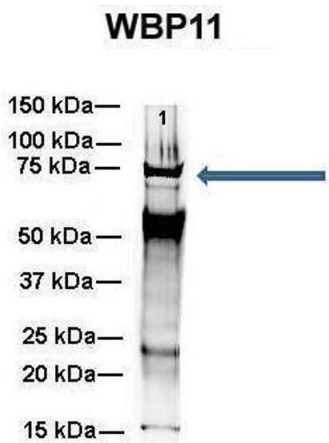
Handling

Format:	Liquid
Concentration:	Lot specific
Buffer:	Liquid. Purified antibody supplied in 1x PBS buffer with 0.09 % (w/v) sodium azide and 2 %

Handling

	sucrose.
Preservative:	Sodium azide
Precaution of Use:	This product contains Sodium azide: a POISONOUS AND HAZARDOUS SUBSTANCE which should be handled by trained staff only.
Handling Advice:	Avoid repeated freeze-thaw cycles.
Storage:	-20 °C
Storage Comment:	For short term use, store at 2-8°C up to 1 week. For long term storage, store at -20°C in small aliquots to prevent freeze-thaw cycles.

Images



See Other Application 1 Data and Customer Feedback for more information

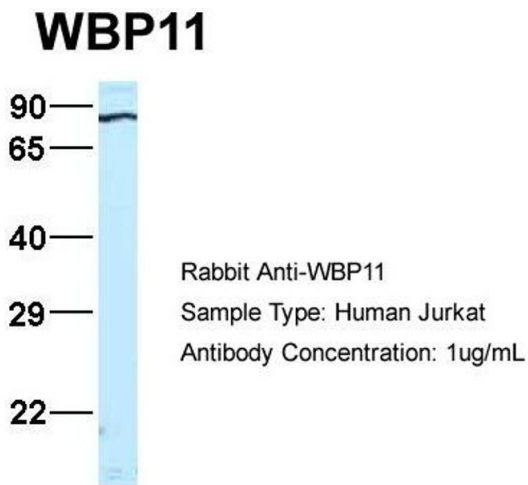


Immunoprecipitation

Image 1. Amount and Sample Type : 500 ug mouse brain homogenate Amount of IP Antibody : 6 ug Primary Antibody : WB Primary Antibody Dilution : 1:500 Secondary Antibody : Goat anti-rabbit Alexa-Fluor 594 Secondary Antibody Dilution : 1:5000 Gene Name : WB Submitted by : Dr. Yuzhi Chen, University of Arkansas for Medical Science

Western Blotting

Image 2. WB Suggested Anti-WBAntibody Titration: 0.2-1 ug/ml ELISA Titer: 1:12500 Positive Control: Hela cell lysate WBis strongly supported by BioGPS gene expression data to be expressed in Human HeLa cells



Western Blotting

Image 3. Host: Rabbit Target Name: WB Sample Type: Jurkat Antibody Dilution: 1.0ug/ml WBis strongly supported by BioGPS gene expression data to be expressed in Jurkat

Please check the [product details page](#) for more images. Overall 5 images are available for ABIN2782558.