

Datasheet for ABIN2782571  
**anti-NIT2 antibody (Middle Region)**

## 2 Images

[Go to Product page](#)

## Overview

Quantity:	100 µL
Target:	NIT2
Binding Specificity:	Middle Region
Reactivity:	Human, Mouse, Rat, Rabbit, Dog, Guinea Pig, Horse, Cow, Saccharomyces cerevisiae, Zebrafish (Danio rerio)
Host:	Rabbit
Clonality:	Polyclonal
Conjugate:	This NIT2 antibody is un-conjugated
Application:	Western Blotting (WB)

## Product Details

Immunogen:	The immunogen is a synthetic peptide directed towards the middle region of human NIT2
Sequence:	VAKECSIYLI GGSIPPEEDAG KLYNTCAVFG PDGTLLAKYR KIHLEFDIDVP
Predicted Reactivity:	Cow: 93%, Dog: 100%, Guinea Pig: 100%, Horse: 100%, Human: 100%, Mouse: 100%, Rabbit: 100%, Rat: 100%, Yeast: 79%, Zebrafish: 93%
Characteristics:	This is a rabbit polyclonal antibody against NIT2. It was validated on Western Blot using a cell lysate as a positive control.
Purification:	Affinity Purified

## Target Details

Target:	NIT2
---------	------

## Target Details

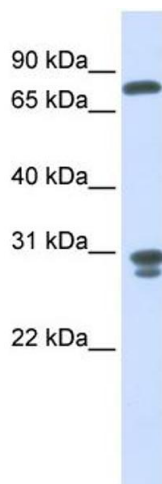
Alternative Name:	NIT2 ( <a href="#">NIT2 Products</a> )
Background:	<p>NIT2 belongs to the UPF0012 family and contains 1 CN hydrolase domain. Overexpression of NIT2 decreases the colony-forming capacity of cultured cells by arresting cells in the G2 phase of the cell cycle.</p> <p>Alias Symbols: MGC111199</p> <p>Protein Interaction Partner: UBC, TMEM189, TMEM177, NPTN, TIMM9, TOR1AIP1, TMED10, PRDX6, SUCLA2, RNASET2, MRPL12, PPT1, PGM1, OPA1, NPTX1,</p> <p>Protein Size: 276</p>
Molecular Weight:	30 kDa
Gene ID:	56954
NCBI Accession:	<a href="#">NM_020202</a> , <a href="#">NP_064587</a>
UniProt:	<a href="#">Q9NQR4</a>

## Application Details

Application Notes:	Optimal working dilutions should be determined experimentally by the investigator.
Comment:	Antigen size: 276 AA
Restrictions:	For Research Use only

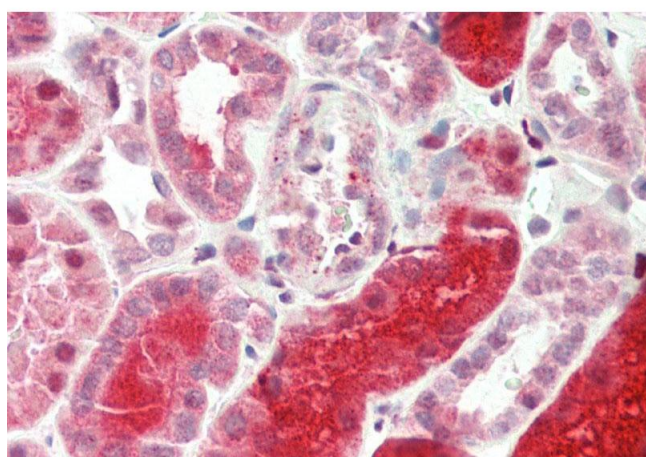
## Handling

Format:	Liquid
Concentration:	Lot specific
Buffer:	Liquid. Purified antibody supplied in 1x PBS buffer with 0.09 % (w/v) sodium azide and 2 % sucrose.
Preservative:	Sodium azide
Precaution of Use:	This product contains Sodium azide: a POISONOUS AND HAZARDOUS SUBSTANCE which should be handled by trained staff only.
Handling Advice:	Avoid repeated freeze-thaw cycles.
Storage:	-20 °C
Storage Comment:	For short term use, store at 2-8°C up to 1 week. For long term storage, store at -20°C in small aliquots to prevent freeze-thaw cycles.



#### Western Blotting

**Image 1.** WB Suggested Anti-NIT2 Antibody Titration: 0.2-1 ug/ml ELISA Titer: 1:1562500 Positive Control: Human Liver



#### Immunohistochemistry

**Image 2.** Rabbit Anti-NIT2 antibody Formalin Fixed Paraffin Embedded Tissue: Human Kidney Primary antibody Concentration: 1:100 Secondary Antibody: Donkey anti-Rabbit-Cy3 Secondary Antibody Concentration: 1:200 Magnification: 20x Exposure Time: 0.5-2.0sec