

Datasheet for ABIN2782576
anti-PSAT1 antibody (N-Term)[Go to Product page](#)

6 Images

2 Publications

Overview

Quantity:	100 µL
Target:	PSAT1
Binding Specificity:	N-Term
Reactivity:	Human, Mouse, Rat, Dog, Rabbit, Cow, Guinea Pig, Horse, Zebrafish (Danio rerio)
Host:	Rabbit
Clonality:	Polyclonal
Conjugate:	This PSAT1 antibody is un-conjugated
Application:	Western Blotting (WB), Immunohistochemistry (IHC)

Product Details

Immunogen:	The immunogen is a synthetic peptide directed towards the N terminal region of human PSAT1
Sequence:	ADYVVTGAWS AKAAEEAKKF GTINIVHPKL GSYTKIPDPS TWNLNPDASY
Predicted Reactivity:	Cow: 100%, Dog: 100%, Guinea Pig: 100%, Horse: 100%, Human: 100%, Mouse: 100%, Rabbit: 100%, Rat: 100%, Zebrafish: 86%
Characteristics:	This is a rabbit polyclonal antibody against PSAT1. It was validated on Western Blot and immunohistochemistry.
Purification:	Affinity Purified

Target Details

Target:	PSAT1
---------	-------

Target Details

Alternative Name:	PSAT1 (PSAT1 Products)
Background:	<p>PSAT1 is likely a phosphoserine aminotransferase, based on similarity to proteins in mouse, rabbit, and Drosophila. The protein encoded by this gene is likely a phosphoserine aminotransferase, based on similarity to proteins in mouse, rabbit, and Drosophila. Alternative splicing of this gene results in two transcript variants encoding different isoforms.</p> <p>Alias Symbols: EPIP, MGC1460, PSA, PSAT</p> <p>Protein Interaction Partner: UBC, NEDD8, PPID, PNP, HPRT1, UBD, BAG3, PSMD10, HSP90AB1, HSP90AA1, CEBPE, TUBB6, THADA, KIAA1598, AHCYL1, TTC1, TALDO1, STAT6, RAC1, FH, APP, ACAT2, CDK2, MAPK6,</p> <p>Protein Size: 370</p>
Molecular Weight:	40 kDa
Gene ID:	29968
NCBI Accession:	NM_058179 , NP_478059
UniProt:	Q9Y617
Pathways:	Warburg Effect

Application Details

Application Notes:	Optimal working dilutions should be determined experimentally by the investigator.
Comment:	Antigen size: 370 AA
Restrictions:	For Research Use only

Handling

Format:	Liquid
Concentration:	Lot specific
Buffer:	Liquid. Purified antibody supplied in 1x PBS buffer with 0.09 % (w/v) sodium azide and 2 % sucrose.
Preservative:	Sodium azide
Precaution of Use:	This product contains Sodium azide: a POISONOUS AND HAZARDOUS SUBSTANCE which should be handled by trained staff only.
Handling Advice:	Avoid repeated freeze-thaw cycles.

Handling

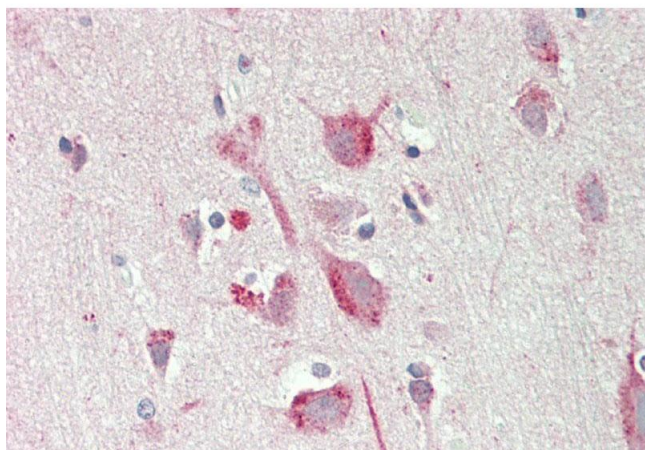
Storage: -20 °C

Storage Comment: For short term use, store at 2-8°C up to 1 week. For long term storage, store at -20°C in small aliquots to prevent freeze-thaw cycles.

Publications

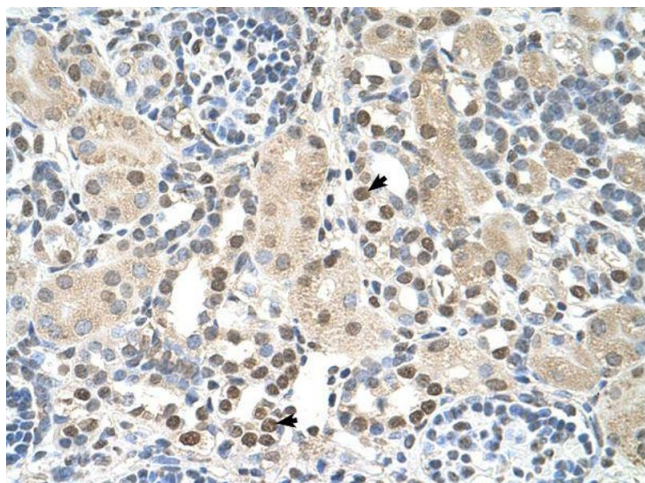
Product cited in: Suzuki, Fujisawa, Ando, Niino, Ohsawa, Shimokata, Ohta: "Alcohol dehydrogenase 2 variant is associated with cerebral infarction and lacunae." in: **Neurology**, Vol. 63, Issue 9, pp. 1711-3, (2004) ([PubMed](#)).

Images



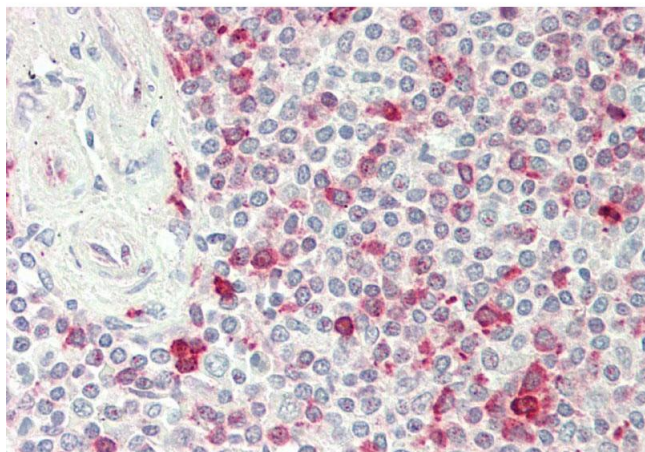
Immunohistochemistry

Image 1. Rabbit Anti-PSAT1 antibody Formalin Fixed Paraffin Embedded Tissue: Human Brain, Cortex Primary antibody Concentration: 1:100 Secondary Antibody: Donkey anti-Rabbit-Cy3 Secondary Antibody Concentration: 1:200 Magnification: 20x Exposure Time: 0.5-2.0sec



Immunohistochemistry

Image 2.



Immunohistochemistry

Image 3. Rabbit Anti-PSAT1 antibody Formalin Fixed Paraffin Embedded Tissue: Human Spleen Primary antibody Concentration: 1:100 Secondary Antibody: Donkey anti-Rabbit-Cy3 Secondary Antibody Concentration: 1:200 Magnification: 20x Exposure Time: 0.5-2.0sec

Please check the [product details page](#) for more images. Overall 6 images are available for ABIN2782576.