



[Go to Product page](#)

Datasheet for ABIN2782582

anti-NT5DC2 antibody (N-Term)

4 Images

Overview

Quantity:	100 µL
Target:	NT5DC2
Binding Specificity:	N-Term
Reactivity:	Human, Mouse, Cow, Rabbit, Dog, Zebrafish (Danio rerio), Guinea Pig, Horse, Rat
Host:	Rabbit
Clonality:	Polyclonal
Conjugate:	This NT5DC2 antibody is un-conjugated
Application:	Western Blotting (WB)

Product Details

Immunogen:	The immunogen is a synthetic peptide directed towards the N terminal region of human NT5DC2
Sequence:	IRKYDYNPSF AIRGLHYDIQ KSLLMKIDAF HYVQLGTAYR GLQPVPDEEV
Predicted Reactivity:	Cow: 100%, Dog: 100%, Guinea Pig: 100%, Horse: 100%, Human: 100%, Mouse: 86%, Rabbit: 100%, Rat: 100%, Zebrafish: 79%
Characteristics:	This is a rabbit polyclonal antibody against NT5DC2. It was validated on Western Blot using a cell lysate as a positive control.
Purification:	Affinity Purified

Target Details

Target:	NT5DC2
---------	--------

Target Details

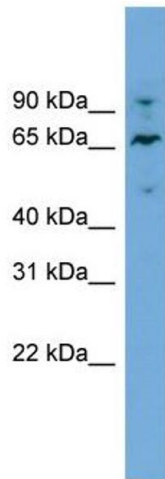
Alternative Name:	NT5DC2 (NT5DC2 Products)
Background:	The function of this protein remains unknown. Alias Symbols: FLJ12442 Protein Interaction Partner: CUL3, UBC, TOLLIP, TERF2, Protein Size: 520
Molecular Weight:	61 kDa
Gene ID:	64943
NCBI Accession:	NM_022908 , NP_075059
UniProt:	Q9H857

Application Details

Application Notes:	Optimal working dilutions should be determined experimentally by the investigator.
Comment:	Antigen size: 520 AA
Restrictions:	For Research Use only

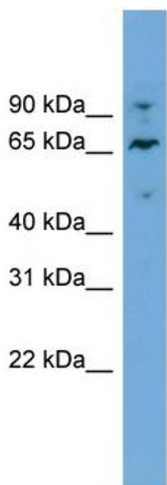
Handling

Format:	Liquid
Concentration:	Lot specific
Buffer:	Liquid. Purified antibody supplied in 1x PBS buffer with 0.09 % (w/v) sodium azide and 2 % sucrose.
Preservative:	Sodium azide
Precaution of Use:	This product contains Sodium azide: a POISONOUS AND HAZARDOUS SUBSTANCE which should be handled by trained staff only.
Handling Advice:	Avoid repeated freeze-thaw cycles.
Storage:	-20 °C
Storage Comment:	For short term use, store at 2-8°C up to 1 week. For long term storage, store at -20°C in small aliquots to prevent freeze-thaw cycles.



Western Blotting

Image 1. WB Suggested Anti-NT5DC2 Antibody Titration:
0.2-1 ug/ml Positive Control: HT1080 cell lysate



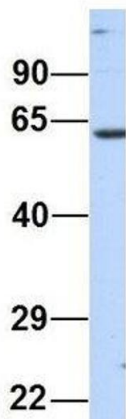
Rabbit Anti-NT5DC2 Antibody
Catalog Number: ARP46322
Lot Number: QC16315
Lane: HT1080 Cell Lysate

Antibody Titration: 1.0µg/ml
Gel Concentration: 12%

Western Blotting

Image 2. WB Suggested Anti-NT5DC2
Antibody Titration: 0.2-1 µg/mL
Positive Control: HT1080 cell lysate

NT5DC2



Rabbit Anti-NT5DC2
Sample Type: Human Adult
Placenta
Antibody Concentration: 1ug/mL

Western Blotting

Image 3. Host: Rabbit Target Name: NT5DC2 Sample Type:
Human Adult Placenta Antibody Dilution: 1.0ug/ml

Please check the [product details page](#) for more images. Overall 4 images are available for ABIN2782582.