



[Go to Product page](#)

Datasheet for ABIN2782583

anti-CENPM antibody (Middle Region)

2 Images

Overview

Quantity:	100 µL
Target:	CENPM
Binding Specificity:	Middle Region
Reactivity:	Human, Cow, Dog, Horse, Pig, Rabbit
Host:	Rabbit
Clonality:	Polyclonal
Conjugate:	This CENPM antibody is un-conjugated
Application:	Western Blotting (WB), Immunofluorescence (IF)

Product Details

Immunogen:	The immunogen is a synthetic peptide directed towards the middle region of human CENPM
Sequence:	CDLEVEGFRA TMAQRLVRVL QICAGHVPGV SALNLLSLLR SSEGPSLEDL
Predicted Reactivity:	Cow: 79%, Dog: 79%, Horse: 93%, Human: 100%, Pig: 93%, Rabbit: 93%
Characteristics:	This is a rabbit polyclonal antibody against CENPM. It was validated on Western Blot using a cell lysate as a positive control.
Purification:	Affinity Purified

Target Details

Target:	CENPM
Alternative Name:	CENPM (CENPM Products)

Target Details

Background: The centromere is a specialized chromatin domain, present throughout the cell cycle, that acts as a platform on which the transient assembly of the kinetochore occurs during mitosis. All active centromeres are characterized by the presence of long arrays of nucleosomes in which CENPA replaces histone H3. CENPM is an additional factor required for centromere assembly. The centromere is a specialized chromatin domain, present throughout the cell cycle, that acts as a platform on which the transient assembly of the kinetochore occurs during mitosis. All active centromeres are characterized by the presence of long arrays of nucleosomes in which CENPA (MIM 117139) replaces histone H3 (see MIM 601128). CENPM is an additional factor required for centromere assembly (Foltz et al., 2006 [PubMed 16622419]). [supplied by OMIM].

Alias Symbols: C22orf18, CENP-M, MGC861, PANE1, bK250D10.2

Protein Interaction Partner: CENPP, CENPL, CENPT, CENPU, CENPO, CENPK, CENPN, CENPQ, CENPI, CENPC, CENPA, UBC,

Protein Size: 180

Molecular Weight: 20 kDa

Gene ID: 79019

NCBI Accession: [NM_024053](#), [NP_076958](#)

UniProt: [Q9NSP4](#)

Application Details

Application Notes: Optimal working dilutions should be determined experimentally by the investigator.

Comment: Antigen size: 180 AA

Restrictions: For Research Use only

Handling

Format: Liquid

Concentration: Lot specific

Buffer: Liquid. Purified antibody supplied in 1x PBS buffer with 0.09 % (w/v) sodium azide and 2 % sucrose.

Preservative: Sodium azide

Precaution of Use: This product contains Sodium azide: a POISONOUS AND HAZARDOUS SUBSTANCE which

Handling

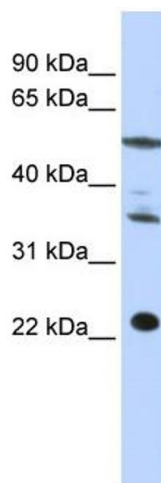
should be handled by trained staff only.

Handling Advice: Avoid repeated freeze-thaw cycles.

Storage: -20 °C

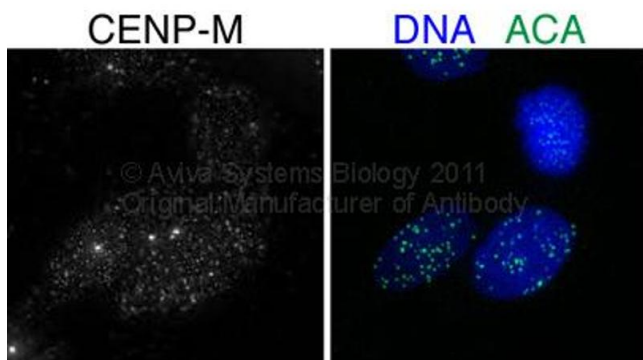
Storage Comment: For short term use, store at 2-8°C up to 1 week. For long term storage, store at -20°C in small aliquots to prevent freeze-thaw cycles.

Images



Western Blotting

Image 1. WB Suggested Anti-CENPM Antibody Titration: 0.2-1 ug/ml ELISA Titer: 1:312500 Positive Control: HepG2 cell lysate



Application data in forum

Image 2.