

Datasheet for ABIN2782589
anti-NINL antibody (Middle Region)[Go to Product page](#)

1 Image

Overview

Quantity:	100 µL
Target:	NINL
Binding Specificity:	Middle Region
Reactivity:	Human, Mouse, Cow, Dog, Horse, Pig, Rabbit, Rat, Saccharomyces cerevisiae
Host:	Rabbit
Clonality:	Polyclonal
Conjugate:	This NINL antibody is un-conjugated
Application:	Western Blotting (WB)

Product Details

Immunogen:	The immunogen is a synthetic peptide directed towards the middle region of Human NINL
Sequence:	DLERAEKRNLEFVKEMDDCHSTLEQLTEKKIKHLEQGYRE RLSLLRSEVE
Predicted Reactivity:	Cow: 85%, Dog: 92%, Horse: 93%, Human: 100%, Mouse: 86%, Pig: 92%, Rabbit: 93%, Rat: 86%, Yeast: 83%
Characteristics:	This is a rabbit polyclonal antibody against NINL. It was validated on Western Blot.
Purification:	Affinity Purified

Target Details

Target:	NINL
Alternative Name:	NINL (NINL Products)

Target Details

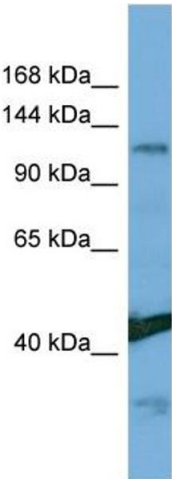
Background:	<p>The function of this protein remains unknown.</p> <p>Protein Interaction Partner: ZNF417, HAUS1, L3MBTL4, FAM161A, SH2D4A, CCDC146, RCOR3, RBM41, CCHCR1, KAT5, CEP250, LATS2, TUBGCP4, TUBG1, PLK1, BRCA1, FZR1, ANAPC2, UBC, CDC27, CDC20, TSPYL4, SYT17, ZNF646, ZNF426, ZNF250, SPERT, DCTN5, ZFC3H1, MBIP, LZTS2, LRSAM1, SH3BP5L, RIBC2, CC</p> <p>Protein Size: 1033</p>
Molecular Weight:	113 kDa
Gene ID:	22981
Pathways:	M Phase , SARS-CoV-2 Protein Interactome

Application Details

Restrictions:	For Research Use only
---------------	-----------------------

Handling

Format:	Liquid
Concentration:	1 mg/mL
Buffer:	Liquid. Purified antibody supplied in 1x PBS buffer with 0.09 % (w/v) sodium azide and 2 % sucrose.
Preservative:	Sodium azide
Precaution of Use:	This product contains Sodium azide: a POISONOUS AND HAZARDOUS SUBSTANCE which should be handled by trained staff only.
Handling Advice:	Avoid repeat freeze-thaw cycles.
Storage:	-20 °C
Storage Comment:	For short term use, store at 2-8°C up to 1 week. For long term storage, store at -20°C in small aliquots to prevent freeze-thaw cycles.



Western Blotting

Image 1. Host: Rabbit Target Name: NINL Sample Type: Hela Whole Cell lysates Antibody Dilution: 1.0ug/ml