

Datasheet for ABIN2782591 anti-ANP32E antibody (Middle Region)



[Go to Product page](#)

4 Images

1 Publication

Overview

Quantity:	100 µL
Target:	ANP32E
Binding Specificity:	Middle Region
Reactivity:	Human, Mouse, Rat, Cow, Dog, Horse, Zebrafish (Danio rerio), Guinea Pig, Rabbit, Saccharomyces cerevisiae
Host:	Rabbit
Clonality:	Polyclonal
Conjugate:	This ANP32E antibody is un-conjugated
Application:	Western Blotting (WB), Immunohistochemistry (IHC)

Product Details

Immunogen:	The immunogen is a synthetic peptide directed towards the middle region of human ANP32E
Sequence:	EDNEAPDSEE EDDEDGDEDD EEEEENEAGP PEGYEEEEEE EEEEEDEDE
Predicted Reactivity:	Cow: 100%, Dog: 100%, Guinea Pig: 93%, Horse: 100%, Human: 100%, Mouse: 93%, Rabbit: 100%, Rat: 100%, Yeast: 82%, Zebrafish: 79%
Characteristics:	This is a rabbit polyclonal antibody against ANP32E. It was validated on Western Blot and immunohistochemistry.
Purification:	Affinity Purified

Target Details

Target:	ANP32E
---------	--------

Target Details

Alternative Name:	ANP32E (ANP32E Products)
Background:	<p>ANP32E inhibits activity of protein phosphatase 2A (PP2A). It does not inhibit protein phosphatase 1. It may play a role in cerebellar development and synaptogenesis process by modulating PP2A activity.</p> <p>Alias Symbols: LANP-L, LANPL, MGC5350</p> <p>Protein Interaction Partner: UBC, rev, ATP6V1C1, RNASEH2B, SNX6, VPS35, ATG7, SNX2, SARS, RDX, SMAD2, FOS, SOX2, RPS2, FYTDD1, PARD3, SUMO2, UCHL5, MGMT, MEPCE,</p> <p>Protein Size: 268</p>
Molecular Weight:	31 kDa
Gene ID:	81611
NCBI Accession:	NM_030920 , NP_112182
UniProt:	Q9BTT0

Application Details

Application Notes:	Optimal working dilutions should be determined experimentally by the investigator.
Comment:	Antigen size: 268 AA
Restrictions:	For Research Use only

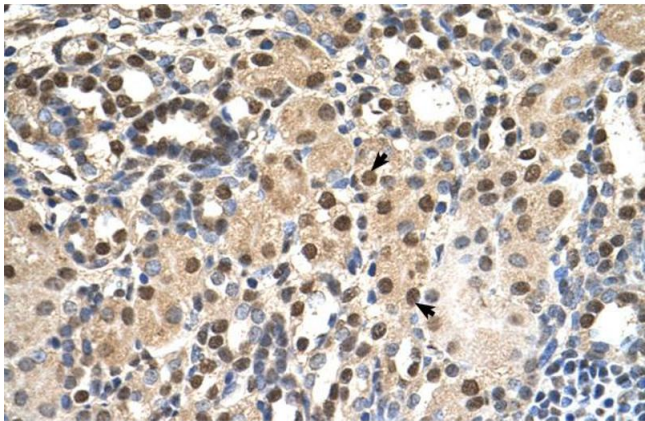
Handling

Format:	Liquid
Concentration:	Lot specific
Buffer:	Liquid. Purified antibody supplied in 1x PBS buffer with 0.09 % (w/v) sodium azide and 2 % sucrose.
Preservative:	Sodium azide
Precaution of Use:	This product contains Sodium azide: a POISONOUS AND HAZARDOUS SUBSTANCE which should be handled by trained staff only.
Handling Advice:	Avoid repeated freeze-thaw cycles.
Storage:	-20 °C
Storage Comment:	For short term use, store at 2-8°C up to 1 week. For long term storage, store at -20°C in small aliquots to prevent freeze-thaw cycles.

Publications

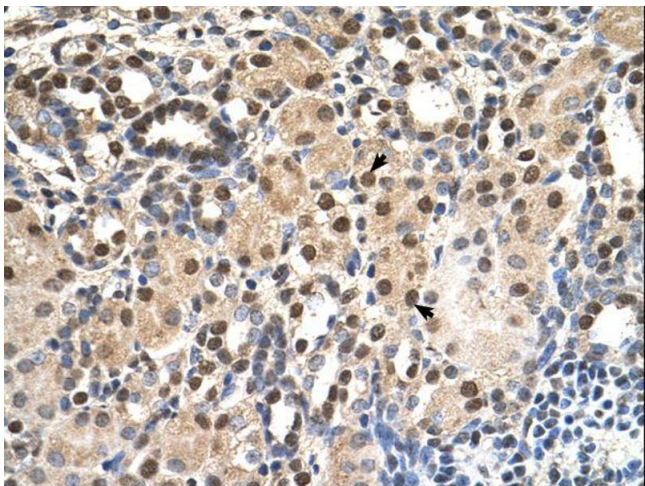
Product cited in: Weiner, Marganski, Wu, Altschuler, Kirschner: "An actin-based wave generator organizes cell motility." in: **PLoS biology**, Vol. 5, Issue 9, pp. e221, (2007) ([PubMed](#)).

Images



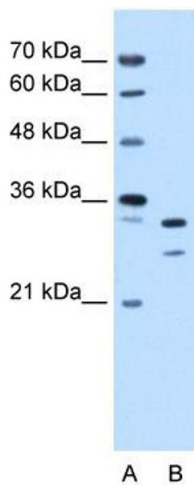
Immunohistochemistry

Image 1. Human kidney



Immunohistochemistry

Image 2.



Western Blotting

Image 3. WB Suggested Anti-ANP32E Antibody Titration:
0.25ug/ml Positive Control: HepG2 cell lysate

Please check the [product details page](#) for more images. Overall 4 images are available for ABIN2782591.