

Datasheet for ABIN2782592
anti-CDT1 antibody (C-Term)[Go to Product page](#)

3 Images

Overview

Quantity:	100 µL
Target:	CDT1
Binding Specificity:	C-Term
Reactivity:	Human, Mouse, Rat, Pig, Cow, Dog, Rabbit, Saccharomyces cerevisiae
Host:	Rabbit
Clonality:	Polyclonal
Conjugate:	This CDT1 antibody is un-conjugated
Application:	Western Blotting (WB), Immunohistochemistry (IHC)

Product Details

Immunogen:	The immunogen is a synthetic peptide directed towards the C terminal region of human CDT1
Sequence:	PATPPATPPA ASPSALKGVS QDLLERIRAK EAQKQLAQMT RCPEQEQLQ
Predicted Reactivity:	Cow: 93%, Dog: 77%, Human: 100%, Mouse: 100%, Pig: 100%, Rabbit: 93%, Rat: 100%, Yeast: 85%
Characteristics:	This is a rabbit polyclonal antibody against CDT1. It was validated on Western Blot using a cell lysate as a positive control.
Purification:	Affinity Purified

Target Details

Target:	CDT1
---------	------

Target Details

Alternative Name:	CDT1 (CDT1 Products)
Background:	<p>CDT1 cooperates with CDC6 to promote the loading of the mini-chromosome maintenance complex onto chromatin to form the pre-replication complex necessary to initiate DNA replication. It binds DNA in a sequence-, strand-, and conformation-independent manner and is a potential oncogene.</p> <p>Alias Symbols: DUP, RIS2</p> <p>Protein Interaction Partner: FBXO31, SKP1, RBX1, CUL1, DTL, PCNA, HECW2, CDK2, CDC6, CDC5L, ORC2, ORC1, GMNN, DGCR8, UBC, SKP2, CDK1, CCNB1, CCNA2, FOXO3, DDB1, COPS5, CUL4A, CUL4B, SMARCA5, MCM6, MAPK8, MAPK1, HDAC11, KAT7, CCNA1, DDB2, CDK4, CCNE1, TP63, TP73, EP300, KAT2B, CDT1, U</p> <p>Protein Size: 546</p>
Molecular Weight:	60 kDa
Gene ID:	81620
NCBI Accession:	NM_030928 , NP_112190
UniProt:	Q9H211
Pathways:	MAPK Signaling , Mitotic G1-G1/S Phases , DNA Replication , Synthesis of DNA

Application Details

Application Notes:	Optimal working dilutions should be determined experimentally by the investigator.
Comment:	Antigen size: 546 AA
Restrictions:	For Research Use only

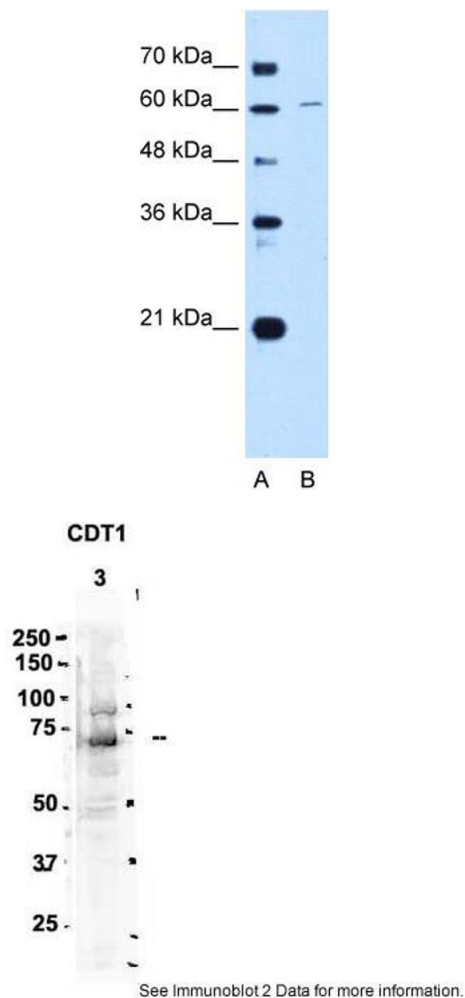
Handling

Format:	Liquid
Concentration:	Lot specific
Buffer:	Liquid. Purified antibody supplied in 1x PBS buffer with 0.09 % (w/v) sodium azide and 2 % sucrose.
Preservative:	Sodium azide
Precaution of Use:	This product contains Sodium azide: a POISONOUS AND HAZARDOUS SUBSTANCE which should be handled by trained staff only.

Handling

Handling Advice:	Avoid repeated freeze-thaw cycles.
Storage:	-20 °C
Storage Comment:	For short term use, store at 2-8°C up to 1 week. For long term storage, store at -20°C in small aliquots to prevent freeze-thaw cycles.

Images



Western Blotting

Image 1. WB Suggested Anti-CDT1 Antibody Titration: 0.2-1 ug/ml Positive Control: HepG2 cell lysate

Western Blotting

Image 2. Sample Type: 3. rat brain extract (80ug)

Primary Antibody Dilution: 2ug/ml

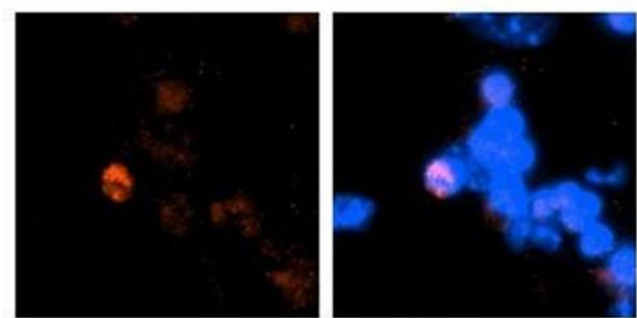
Secondary Antibody: IRDye 800CW goat anti-rabbit from Li-COR Bioscience

Secondary Antibody Dilution: 1: 20,000

Image Submitted by: Yuzhi Chen

University of Arkansas for Medical Science

CDT1



Antibody--RED
DAPI--Blue

See IHC 1 Data and Customer Feedback for more information

Immunohistochemistry

Image 3. HC Suggested Anti-CDT1 antibody Titration:2 ug/ml Positive Control:Mouse brain stem cells