



[Go to Product page](#)

Datasheet for ABIN2782593
anti-GINS4 antibody (N-Term)

1 Image

Overview

Quantity:	100 µL
Target:	GINS4
Binding Specificity:	N-Term
Reactivity:	Human, Mouse, Horse, Cow, Guinea Pig
Host:	Rabbit
Clonality:	Polyclonal
Conjugate:	This GINS4 antibody is un-conjugated
Application:	Western Blotting (WB)

Product Details

Immunogen:	The immunogen is a synthetic peptide directed towards the N-terminal region of Human GINS4
Sequence:	TEEVDFLGQD SDGGSEEVVL TPAELIERLE QAWMNEKFAP ELLESKPEIV
Predicted Reactivity:	Cow: 79%, Guinea Pig: 79%, Horse: 79%, Human: 100%, Mouse: 80%
Characteristics:	This is a rabbit polyclonal antibody against GINS4. It was validated on Western Blot.
Purification:	Affinity Purified

Target Details

Target:	GINS4
Alternative Name:	GINS4 (GINS4 Products)
Background:	The yeast heterotetrameric GINS complex is made up of Sld5, Psf1, Psf2, and Psf3. The

Target Details

formation of the GINS complex is essential for the initiation of DNA replication in yeast and *Xenopus* egg extracts. See GINS1 for additional information about the GINS complex.

Alias Symbols: SLD5

Protein Interaction Partner: GINS2, DCPS, NCDN, ASL, PDHA1, LDHB, YWHAZ, PPP1R2, NUDCD2, GINS3, PPIL3, PRDX5, AHCYL1, PAICS, CD2BP2, SRSF9, IKBKG, LAGE3, IGBP1, GRK5, GINS1, POLE, POLD1, POLA1, UBC,

Protein Size: 223

Molecular Weight: 26 kDa

Gene ID: 84296

NCBI Accession: [NM_032336](#), [NP_115712](#)

UniProt: [Q9BRT9](#)

Pathways: [DNA Replication](#), [Synthesis of DNA](#)

Application Details

Restrictions: For Research Use only

Handling

Format: Liquid

Concentration: 1 mg/mL

Buffer: Liquid. Purified antibody supplied in 1x PBS buffer with 0.09 % (w/v) sodium azide and 2 % sucrose.

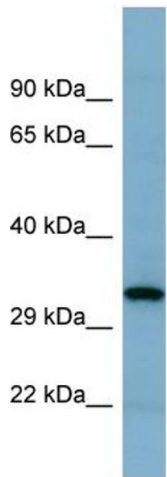
Preservative: Sodium azide

Precaution of Use: This product contains Sodium azide: a POISONOUS AND HAZARDOUS SUBSTANCE which should be handled by trained staff only.

Handling Advice: Avoid repeat freeze-thaw cycles.

Storage: -20 °C

Storage Comment: For short term use, store at 2-8°C up to 1 week. For long term storage, store at -20°C in small aliquots to prevent freeze-thaw cycles.



Host: Rabbit
Target Name: GINS4
Sample Tissue: THP-1 Cell Lysate
Antibody Dilution: 1.0µg/ml

Western Blotting

Image 1. Host: Rabbit Target Name: GINS4 Sample Tissue: Human THP-1 Whole Cell Antibody Dilution: 1ug/ml