

Datasheet for ABIN2782597  
**anti-GPAA1 antibody (C-Term)**[Go to Product page](#)

## 4 Images

## Overview

Quantity:	100 µL
Target:	GPAA1
Binding Specificity:	C-Term
Reactivity:	Human, Mouse, Rat, Cow, Guinea Pig, Horse, Rabbit, Dog
Host:	Rabbit
Clonality:	Polyclonal
Conjugate:	This GPAA1 antibody is un-conjugated
Application:	Western Blotting (WB), Immunohistochemistry (IHC)

## Product Details

Immunogen:	The immunogen is a synthetic peptide directed towards the C terminal region of human GPAA1
Sequence:	LGSLFLWREL QEAPLSLAEG WQLFLAALAQ GVLEHHTYGA LLFPLLSLGL
Predicted Reactivity:	Cow: 100%, Dog: 93%, Guinea Pig: 100%, Horse: 100%, Human: 100%, Mouse: 93%, Rabbit: 86%, Rat: 100%
Characteristics:	This is a rabbit polyclonal antibody against GPAA1. It was validated on Western Blot and immunohistochemistry.
Purification:	Affinity Purified

## Target Details

Target:	GPAA1
---------	-------

## Target Details

Alternative Name:	GPAA1 ( <a href="#">GPAA1 Products</a> )
Background:	<p>Posttranslational glycosylphosphatidylinositol (GPI) anchor attachment serves as a general mechanism for linking proteins to the cell surface membrane. GPAA1 presumably functions in GPI anchoring at the GPI transfer step. The anchor attachment protein 1 contains an N-terminal signal sequence, 1 cAMP- and cGMP-dependent protein kinase phosphorylation site, 1 leucine zipper pattern, 2 potential N-glycosylation sites, and 8 putative transmembrane domains. Posttranslational glycosylphosphatidylinositol (GPI) anchor attachment serves as a general mechanism for linking proteins to the cell surface membrane. The protein encoded by this gene presumably functions in GPI anchoring at the GPI transfer step. The mRNA transcript is ubiquitously expressed in both fetal and adult tissues. The anchor attachment protein 1 contains an N-terminal signal sequence, 1 cAMP- and cGMP-dependent protein kinase phosphorylation site, 1 leucine zipper pattern, 2 potential N-glycosylation sites, and 8 putative transmembrane domains.</p> <p>Alias Symbols: GAA1, hGAA1</p> <p>Protein Interaction Partner: UBC, PIGT, PIGU, PRR13, PIGK, EIF3E, PIN1, GRIK5, PIGS,</p> <p>Protein Size: 621</p>
Molecular Weight:	67 kDa
Gene ID:	8733
NCBI Accession:	<a href="#">NM_003801</a> , <a href="#">NP_003792</a>
UniProt:	<a href="#">O43292</a>
Pathways:	<a href="#">Inositol Metabolic Process</a> , <a href="#">Maintenance of Protein Location</a> , <a href="#">SARS-CoV-2 Protein Interactome</a>

## Application Details

Application Notes:	Optimal working dilutions should be determined experimentally by the investigator.
Comment:	Antigen size: 621 AA
Restrictions:	For Research Use only

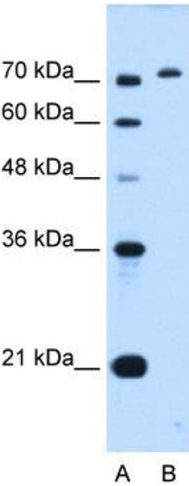
## Handling

Format:	Liquid
Concentration:	Lot specific
Buffer:	Liquid. Purified antibody supplied in 1x PBS buffer with 0.09 % (w/v) sodium azide and 2 %

Handling

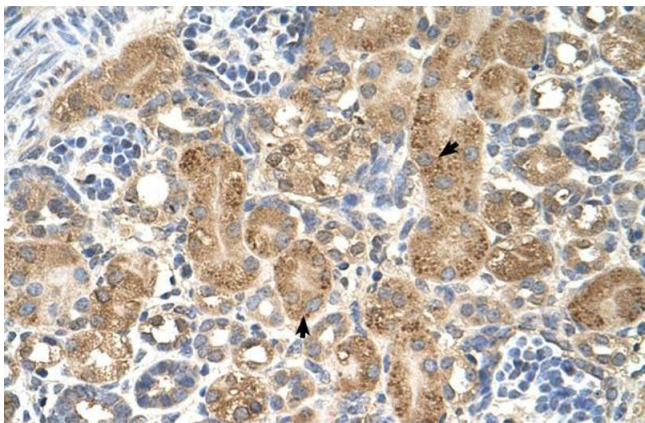
	sucrose.
Preservative:	Sodium azide
Precaution of Use:	This product contains Sodium azide: a POISONOUS AND HAZARDOUS SUBSTANCE which should be handled by trained staff only.
Handling Advice:	Avoid repeated freeze-thaw cycles.
Storage:	-20 °C
Storage Comment:	For short term use, store at 2-8°C up to 1 week. For long term storage, store at -20°C in small aliquots to prevent freeze-thaw cycles.

Images



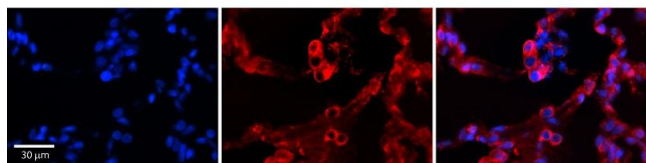
Western Blotting

**Image 1.** WB Suggested Anti-GPAA1 Antibody Titration: 0.2-1 ug/ml Positive Control: HepG2 cell lysate



Immunohistochemistry

**Image 2.** Human kidney



### Immunohistochemistry

**Image 3.** GPAA1 antibody - C-terminal region Formalin Fixed Paraffin Embedded Tissue: Human Lung Tissue Observed Staining: Cytoplasm of pneumocytes Primary Antibody Concentration: 1:100 Other Working Concentrations: 1/600 Secondary Antibody: Donkey anti-Rabbit-Cy3 Secondary Antibody Concentration: 1:200 Magnification: 20X Exposure Time: 0.5 - 2.0 sec

Please check the [product details page](#) for more images. Overall 4 images are available for ABIN2782597.