



[Go to Product page](#)

Datasheet for ABIN2782615
anti-FCER1G antibody (N-Term)

2 Images

Overview

Quantity:	100 µL
Target:	FCER1G
Binding Specificity:	N-Term
Reactivity:	Human, Mouse, Rat, Cow, Guinea Pig, Dog
Host:	Rabbit
Clonality:	Polyclonal
Conjugate:	This FCER1G antibody is un-conjugated
Application:	Western Blotting (WB)

Product Details

Immunogen:	The immunogen is a synthetic peptide directed towards the N terminal region of human FCER1G
Sequence:	MIPAVLLLLL LLVEQAAALG EPQLCYILDA ILFLYGIVLT LLYCRLKIQV
Predicted Reactivity:	Cow: 100%, Dog: 100%, Guinea Pig: 100%, Human: 100%, Mouse: 100%, Rat: 93%
Characteristics:	This is a rabbit polyclonal antibody against FCER1G. It was validated on Western Blot.
Purification:	Affinity Purified

Target Details

Target:	FCER1G
Alternative Name:	FCER1G (FCER1G Products)

Target Details

Background:	<p>The high affinity IgE receptor is a key molecule involved in allergic reactions. It is a tetramer composed of 1 alpha, 1 beta, and 2 gamma chains. The gamma chains are also subunits of other Fc receptors.</p> <p>Alias Symbols: FCRG</p> <p>Protein Interaction Partner: UBC, GP6, KIR2DL4, NCR1, PLCG2, SYK, LYN, FCER1A, FCGR3A,</p> <p>Protein Size: 86</p>
Molecular Weight:	8 kDa
Gene ID:	2207
NCBI Accession:	NM_004106 , NP_004097
UniProt:	P30273
Pathways:	Fc-epsilon Receptor Signaling Pathway , Regulation of Leukocyte Mediated Immunity , Positive Regulation of Immune Effector Process , Production of Molecular Mediator of Immune Response

Application Details

Application Notes:	Optimal working dilutions should be determined experimentally by the investigator.
Comment:	Antigen size: 86 AA
Restrictions:	For Research Use only

Handling

Format:	Liquid
Concentration:	Lot specific
Buffer:	Liquid. Purified antibody supplied in 1x PBS buffer with 0.09 % (w/v) sodium azide and 2 % sucrose.
Preservative:	Sodium azide
Precaution of Use:	This product contains Sodium azide: a POISONOUS AND HAZARDOUS SUBSTANCE which should be handled by trained staff only.
Handling Advice:	Avoid repeated freeze-thaw cycles.
Storage:	-20 °C
Storage Comment:	For short term use, store at 2-8°C up to 1 week. For long term storage, store at -20°C in small

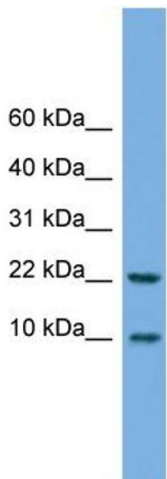
aliquots to prevent freeze-thaw cycles.

Images



Western Blotting

Image 1. WB Suggested Anti-FCER1G Antibody Titration: 0.2-1 ug/ml ELISA Titer: 1:62500 Positive Control: Hela cell lysate



Rabbit Anti-FCER1G Antibody
Catalog Number: ARP46405
Lot Number: QC16556
Lane: Hela Cell Lysate

Antibody Titration: 1.0µg/ml
Gel Concentration: 10-20%

Western Blotting

Image 2. WB Suggested Anti-FCER1G Antibody Titration: 0.2-1 µg/mL ELISA Titer: 1:2500 Positive Control: Hela cell lysate