

Datasheet for ABIN2782626
anti-CHST2 antibody (Middle Region)

6 Images

[Go to Product page](#)

Overview

Quantity:	100 µL
Target:	CHST2
Binding Specificity:	Middle Region
Reactivity:	Human, Mouse, Rat, Cow, Dog, Guinea Pig, Horse, Rabbit
Host:	Rabbit
Clonality:	Polyclonal
Conjugate:	This CHST2 antibody is un-conjugated
Application:	Western Blotting (WB)

Product Details

Immunogen:	The immunogen is a synthetic peptide directed towards the middle region of human CHST2
Sequence:	NAWRTALTFQ QIKQVEEFCY QPMAVLGYER VNSPEEVKDL SKTLLRKPR
Predicted Reactivity:	Cow: 100%, Dog: 100%, Guinea Pig: 100%, Horse: 100%, Human: 100%, Mouse: 100%, Rabbit: 100%, Rat: 100%
Characteristics:	This is a rabbit polyclonal antibody against CHST2. It was validated on Western Blot using a cell lysate as a positive control.
Purification:	Affinity Purified

Target Details

Target:	CHST2
---------	-------

Target Details

Alternative Name:	CHST2 (CHST2 Products)
Background:	<p>N-acetylglucosamine-6-O-sulfotransferases, such as CHST2, catalyze the transfer of sulfate from 3-prime-phosphoadenosine 5-prime-phosphosulfate (PAPS) to position 6 of a nonreducing N-acetylglucosamine (GlcNAc) residue.</p> <p>Alias Symbols: C6ST, GST2, GST-2, Gn6ST-1, glcNAc6ST-1</p> <p>Protein Size: 530</p>
Molecular Weight:	58 kDa
Gene ID:	9435
NCBI Accession:	NM_004267 , NP_004258
UniProt:	Q9Y4C5
Pathways:	Glycosaminoglycan Metabolic Process

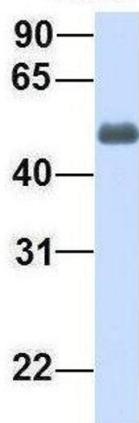
Application Details

Application Notes:	Optimal working dilutions should be determined experimentally by the investigator.
Comment:	Antigen size: 530 AA
Restrictions:	For Research Use only

Handling

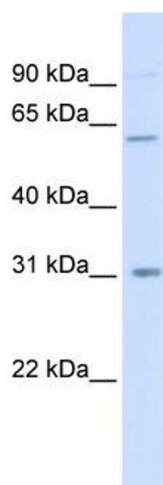
Format:	Liquid
Concentration:	Lot specific
Buffer:	Liquid. Purified antibody supplied in 1x PBS buffer with 0.09 % (w/v) sodium azide and 2 % sucrose.
Preservative:	Sodium azide
Precaution of Use:	This product contains Sodium azide: a POISONOUS AND HAZARDOUS SUBSTANCE which should be handled by trained staff only.
Handling Advice:	Avoid repeated freeze-thaw cycles.
Storage:	-20 °C
Storage Comment:	For short term use, store at 2-8°C up to 1 week. For long term storage, store at -20°C in small aliquots to prevent freeze-thaw cycles.

CHST2



Western Blotting

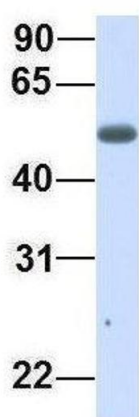
Image 1. Host: Rabbit Target Name: CHST2 Sample Type: Human Fetal Lung Antibody Dilution: 1.0ug/ml



Western Blotting

Image 2. WB Suggested Anti-CHST2 Antibody Titration: 0.2-1 ug/ml ELISA Titer: 1:62500 Positive Control: 293T cell lysate

CHST2



Western Blotting

Image 3. Host: Rabbit Target Name: CHST2 Sample Type: Human Adult Placenta Antibody Dilution: 1.0ug/ml

Please check the [product details page](#) for more images. Overall 6 images are available for ABIN2782626.