



[Go to Product page](#)

Datasheet for ABIN2782636

anti-Ephrin B1 antibody (Middle Region)

2 Images

Overview

| | |
|----------------------|---|
| Quantity: | 100 µL |
| Target: | Ephrin B1 (EFNB1) |
| Binding Specificity: | Middle Region |
| Reactivity: | Human, Mouse, Rat, Cow, Dog, Guinea Pig, Rabbit |
| Host: | Rabbit |
| Clonality: | Polyclonal |
| Conjugate: | This Ephrin B1 antibody is un-conjugated |
| Application: | Western Blotting (WB) |

Product Details

| | |
|-----------------------|---|
| Immunogen: | The immunogen is a synthetic peptide directed towards the middle region of human EFNB1 |
| Sequence: | SRPSKEADNT VKMATQAPGS RGS LGSDSGK HETVNQEEKS GPGASGGSSG |
| Predicted Reactivity: | Cow: 93%, Dog: 100%, Guinea Pig: 100%, Human: 100%, Mouse: 100%, Rabbit: 100%, Rat: 100% |
| Characteristics: | This is a rabbit polyclonal antibody against EFNB1. It was validated on Western Blot using a cell lysate as a positive control. |
| Purification: | Affinity Purified |

Target Details

| | |
|-------------------|--|
| Target: | Ephrin B1 (EFNB1) |
| Alternative Name: | EFNB1 (EFNB1 Products) |

Target Details

| | |
|-------------------|---|
| Background: | <p>The protein encoded by this gene is a type I membrane protein and a ligand of Eph-related receptor tyrosine kinases. It may play a role in cell adhesion and function in the development or maintenance of the nervous system.</p> <p>Alias Symbols: CFND, CFNS, EFL3, EPLG2, Elk-L, LERK2, MGC8782</p> <p>Protein Interaction Partner: UBC, SMURF2, SMURF1, CAPN10, YWHAQ, CUL3, MYC, CAP1, NCK2, GRIP1, PICK1, SORBS1, SDCBP, RGS3, EPHB2, TIAM1, EPHB1, PTPN13, EFNB1, SRC, EPHA3,</p> <p>Protein Size: 346</p> |
| Molecular Weight: | 35 kDa |
| Gene ID: | 1947 |
| NCBI Accession: | NM_004429 , NP_004420 |
| UniProt: | P98172 |
| Pathways: | RTK Signaling |

Application Details

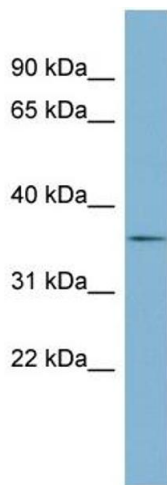
| | |
|--------------------|--|
| Application Notes: | Optimal working dilutions should be determined experimentally by the investigator. |
| Comment: | Antigen size: 346 AA |
| Restrictions: | For Research Use only |

Handling

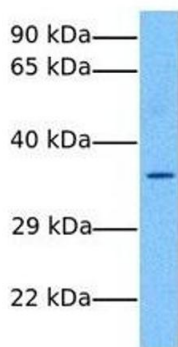
| | |
|--------------------|--|
| Format: | Liquid |
| Concentration: | Lot specific |
| Buffer: | Liquid. Purified antibody supplied in 1x PBS buffer with 0.09 % (w/v) sodium azide and 2 % sucrose. |
| Preservative: | Sodium azide |
| Precaution of Use: | This product contains Sodium azide: a POISONOUS AND HAZARDOUS SUBSTANCE which should be handled by trained staff only. |
| Handling Advice: | Avoid repeated freeze-thaw cycles. |
| Storage: | -20 °C |
| Storage Comment: | For short term use, store at 2-8°C up to 1 week. For long term storage, store at -20°C in small |

aliquots to prevent freeze-thaw cycles.

Images



EFNB1



Western Blotting

Image 1. WB Suggested Anti-EFNB1 Antibody Titration: 0.2-1 ug/ml Positive Control: Human kidney

Western Blotting

Image 2. Host: Rabbit Target Name: EFNB1 Sample Tissue: Human Fetal Liver Antibody Dilution: 1.0ug/ml