



[Go to Product page](#)

Datasheet for ABIN2782641

anti-Golgin B1 (GOLGB1) (N-Term) antibody

2 Images

Overview

Quantity:	100 µL
Target:	Golgin B1 (GOLGB1)
Binding Specificity:	N-Term
Reactivity:	Human, Mouse, Rat, Pig, Rabbit, Cow, Dog, Horse
Host:	Rabbit
Clonality:	Polyclonal
Conjugate:	Un-conjugated
Application:	Western Blotting (WB), Immunohistochemistry (IHC)

Product Details

Immunogen:	The immunogen is a synthetic peptide directed towards the N terminal region of human GOLGB1
Sequence:	NKYIEEMKAQ GGTVLPTEPQ SEEQLSKHDK SSTEEMEIE KIKHKLQEKE
Predicted Reactivity:	Cow: 100%, Dog: 100%, Horse: 93%, Human: 100%, Mouse: 85%, Pig: 100%, Rabbit: 100%, Rat: 92%
Characteristics:	This is a rabbit polyclonal antibody against GOLGB1. It was validated on Western Blot using a cell lysate as a positive control.
Purification:	Affinity Purified

Target Details

Target:	Golgin B1 (GOLGB1)
---------	--------------------

Target Details

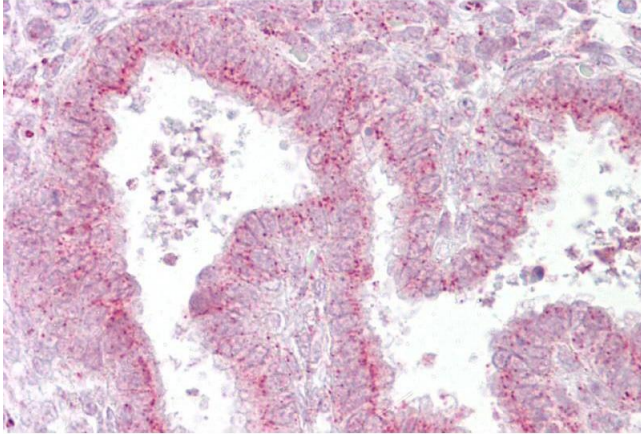
Alternative Name:	GOLGB1 (GOLGB1 Products)
Background:	<p>GOLGB1 may participate in forming intercisternal cross-bridges of the Golgi complex.</p> <p>Alias Symbols: GCP, GCP372, GIANTIN, GOLIM1</p> <p>Protein Interaction Partner: UBC, PFN2, SKIL, ERGIC1, Asap1, KIAA0368, ITSN2, UBE2I, SREBF2, MAPK7, KIAA1377, USO1, ACBD3, BRMS1, VT11B, CAV2, NDUFA1, SLC2A3, Sh3d21,</p> <p>Protein Size: 3259</p>
Molecular Weight:	376 kDa
Gene ID:	2804
NCBI Accession:	NM_004487 , NP_004478
UniProt:	Q14789
Pathways:	SARS-CoV-2 Protein Interactome

Application Details

Application Notes:	Optimal working dilutions should be determined experimentally by the investigator.
Comment:	Antigen size: 3259 AA
Restrictions:	For Research Use only

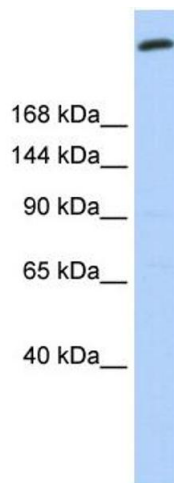
Handling

Format:	Liquid
Concentration:	Lot specific
Buffer:	Liquid. Purified antibody supplied in 1x PBS buffer with 0.09 % (w/v) sodium azide and 2 % sucrose.
Preservative:	Sodium azide
Precaution of Use:	This product contains Sodium azide: a POISONOUS AND HAZARDOUS SUBSTANCE which should be handled by trained staff only.
Handling Advice:	Avoid repeated freeze-thaw cycles.
Storage:	-20 °C
Storage Comment:	For short term use, store at 2-8°C up to 1 week. For long term storage, store at -20°C in small aliquots to prevent freeze-thaw cycles.



Immunohistochemistry

Image 1. Immunohistochemistry with Uterus tissue at an antibody concentration of 5µg/ml using anti-GOLGB1 antibody (ARP46464_P050)



Western Blotting

Image 2. WB Suggested Anti-GOLGB1 Antibody Titration: 0.2-1 ug/ml ELISA Titer: 1:12500 Positive Control: 721_B cell lysate GOLGB1 is supported by BioGPS gene expression data to be expressed in 721_B