



[Go to Product page](#)

Datasheet for ABIN2782654

## anti-MMP20 antibody (Middle Region)

### 2 Images

#### Overview

Quantity:	100 µL
Target:	MMP20
Binding Specificity:	Middle Region
Reactivity:	Human, Mouse, Rat, Pig, Cow, Dog, Horse, Rabbit
Host:	Rabbit
Clonality:	Polyclonal
Conjugate:	This MMP20 antibody is un-conjugated
Application:	Western Blotting (WB)

#### Product Details

Immunogen:	The immunogen is a synthetic peptide directed towards the middle region of human MMP20
Sequence:	AAVYLREPQK TLFFVGDEYY SYDERKRRKME KDYPKNTEEE FSGVNGQIDA
Predicted Reactivity:	Cow: 93%, Dog: 100%, Horse: 93%, Human: 100%, Mouse: 100%, Pig: 100%, Rabbit: 86%, Rat: 92%
Characteristics:	This is a rabbit polyclonal antibody against MMP20. It was validated on Western Blot.
Purification:	Affinity Purified

#### Target Details

Target:	MMP20
Alternative Name:	MMP20 ( <a href="#">MMP20 Products</a> )

## Target Details

---

**Background:** Proteins of the matrix metalloproteinase (MMP) family are involved in the breakdown of extracellular matrix in normal physiological processes, such as embryonic development, reproduction, and tissue remodeling, as well as in disease processes, such as arthritis and metastasis. Most MMP's are secreted as inactive proproteins which are activated when cleaved by extracellular proteinases. MMP20 degrades amelogenin, the major protein component of dental enamel matrix, and so the protein is thought to play a role in tooth enamel formation. A mutation in the gene encoding MMP20, which alters the normal splice pattern and results in premature termination of the encoded protein, has been associated with amelogenesis imperfecta.

Alias Symbols: AI2A2, MMP-20

Protein Interaction Partner: ACAN,

Protein Size: 483

---

**Molecular Weight:** 43 kDa

---

**Gene ID:** 9313

---

**NCBI Accession:** [NM\\_004771](#), [NP\\_004762](#)

---

**UniProt:** [O60882](#)

## Application Details

---

**Application Notes:** Optimal working dilutions should be determined experimentally by the investigator.

---

**Comment:** Antigen size: 483 AA

---

**Restrictions:** For Research Use only

## Handling

---

**Format:** Liquid

---

**Concentration:** Lot specific

---

**Buffer:** Liquid. Purified antibody supplied in 1x PBS buffer with 0.09 % (w/v) sodium azide and 2 % sucrose.

---

**Preservative:** Sodium azide

---

**Precaution of Use:** This product contains Sodium azide: a POISONOUS AND HAZARDOUS SUBSTANCE which should be handled by trained staff only.

---

**Handling Advice:** Avoid repeated freeze-thaw cycles.

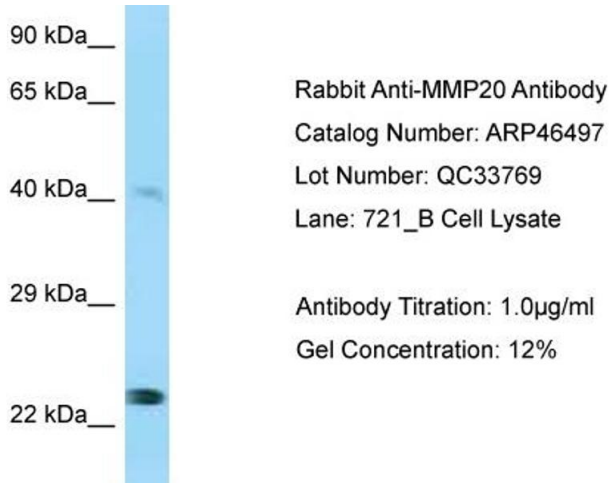
---

## Handling

Storage: -20 °C

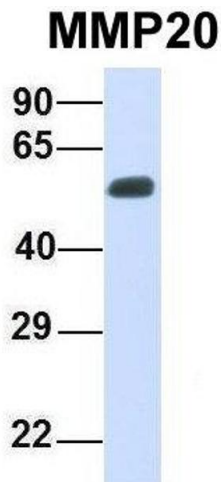
Storage Comment: For short term use, store at 2-8°C up to 1 week. For long term storage, store at -20°C in small aliquots to prevent freeze-thaw cycles.

## Images



### Western Blotting

**Image 1.** WB Suggested Anti-MMP20 Antibody Titration: 0.2-1 ug/ml ELISA Titer: 1:312500 Positive Control: HepG2 cell lysate



### Western Blotting

**Image 2.** Host: Rabbit Target Name: MMP20 Sample Type: Human Fetal Muscle Antibody Dilution: 1.0ug/ml