

Datasheet for ABIN2782655
anti-B4GALT6 antibody (C-Term)



[Go to Product page](#)

1 Image

Overview

Quantity:	100 µL
Target:	B4GALT6
Binding Specificity:	C-Term
Reactivity:	Human, Mouse, Rat, Cow, Dog, Horse, Rabbit, Guinea Pig, Pig, Zebrafish (Danio rerio)
Host:	Rabbit
Clonality:	Polyclonal
Conjugate:	This B4GALT6 antibody is un-conjugated
Application:	Western Blotting (WB)

Product Details

Immunogen:	The immunogen is a synthetic peptide corresponding to a region of Mouse
Sequence:	GGEDDDLWNR VHYAGYNVTR PEGDLGKYIS IPHHHRGEVQ FLGRYKLLRY
Predicted Reactivity:	Cow: 100%, Dog: 100%, Guinea Pig: 93%, Horse: 100%, Human: 100%, Mouse: 100%, Pig: 100%, Rabbit: 100%, Rat: 100%, Zebrafish: 93%
Characteristics:	This is a rabbit polyclonal antibody against B4galt6. It was validated on Western Blot.
Purification:	Affinity Purified

Target Details

Target:	B4GALT6
Alternative Name:	B4galt6 (B4GALT6 Products)

Target Details

Background: B4galt6 is required for the biosynthesis of glycosphingolipids.
Alias Symbols: AA536803, AU022389
Protein Size: 382

Molecular Weight: 45 kDa

Gene ID: 56386

NCBI Accession: [NM_019737](#), [NP_062711](#)

UniProt: [Q9WVK5](#)

Pathways: [Glycosaminoglycan Metabolic Process](#)

Application Details

Application Notes: Optimal working dilutions should be determined experimentally by the investigator.

Comment: Antigen size: 382 AA

Restrictions: For Research Use only

Handling

Format: Liquid

Concentration: Lot specific

Buffer: Liquid. Purified antibody supplied in 1x PBS buffer with 0.09 % (w/v) sodium azide and 2 % sucrose.

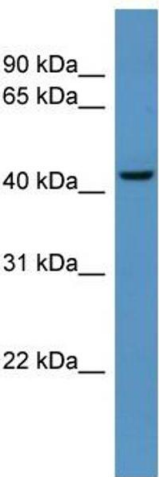
Preservative: Sodium azide

Precaution of Use: This product contains Sodium azide: a POISONOUS AND HAZARDOUS SUBSTANCE which should be handled by trained staff only.

Handling Advice: Avoid repeated freeze-thaw cycles.

Storage: -20 °C

Storage Comment: For short term use, store at 2-8°C up to 1 week. For long term storage, store at -20°C in small aliquots to prevent freeze-thaw cycles.



Western Blotting

Image 1. WB Suggested Anti-B4galt6 Antibody Titration:
0.2-1 ug/ml ELISA Titer: 1:62500 Positive Control: Mouse Liver