



[Go to Product page](#)

Datasheet for ABIN2782663
anti-SSPN antibody (Middle Region)

1 Image

Overview

Quantity:	100 µL
Target:	SSPN
Binding Specificity:	Middle Region
Reactivity:	Human, Rat, Mouse, Pig, Rabbit, Cow, Dog, Guinea Pig, Horse
Host:	Rabbit
Clonality:	Polyclonal
Conjugate:	This SSPN antibody is un-conjugated
Application:	Western Blotting (WB)

Product Details

Immunogen:	The immunogen is a synthetic peptide directed towards the middle region of human SSPN
Sequence:	AHHYSQLTQF TCETTLDSCQ CKLPSSSEPLS RTFVYRDVTD CTSVTGTFKL
Predicted Reactivity:	Cow: 100%, Dog: 93%, Guinea Pig: 93%, Horse: 79%, Human: 100%, Mouse: 93%, Pig: 100%, Rabbit: 100%, Rat: 100%
Characteristics:	This is a rabbit polyclonal antibody against SSPN. It was validated on Western Blot using a cell lysate as a positive control.
Purification:	Affinity Purified

Target Details

Target:	SSPN
---------	------

Target Details

Alternative Name: [SSPN \(SSPN Products\)](#)

Background: SSPN is a member of the dystrophin-glycoprotein complex (DGC). The DGC spans the sarcolemma and is comprised of dystrophin, syntrophin, alpha- and beta-dystroglycans and sarcoglycans. The DGC provides a structural link between the subsarcolemmal cytoskeleton and the extracellular matrix of muscle cells. SSPN gene is expressed in a variety of tissues with highest levels in muscle, where alternative splice variants have been observed. In certain tumors KRAS2, SSPN, and ITPR2 are coamplified. The function of this gene is unknown.

Publication Note: This RefSeq record includes a subset of the publications that are available for this gene. Please see the Entrez Gene record to access additional publications.

Alias Symbols: KRAG, SPN1, SPN2, NSPN, DAGA5, nanospan

Protein Interaction Partner: Supt6, SGCG,

Protein Size: 243

Molecular Weight: 26 kDa

Gene ID: 8082

NCBI Accession: [NM_005086](#), [NP_005077](#)

UniProt: [Q14714](#)

Application Details

Application Notes: Optimal working dilutions should be determined experimentally by the investigator.

Comment: Antigen size: 243 AA

Restrictions: For Research Use only

Handling

Format: Liquid

Concentration: Lot specific

Buffer: Liquid. Purified antibody supplied in 1x PBS buffer with 0.09 % (w/v) sodium azide and 2 % sucrose.

Preservative: Sodium azide

Precaution of Use: This product contains Sodium azide: a POISONOUS AND HAZARDOUS SUBSTANCE which should be handled by trained staff only.

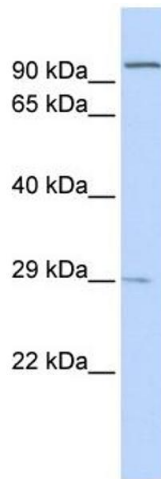
Handling Advice: Avoid repeated freeze-thaw cycles.

Handling

Storage: -20 °C

Storage Comment: For short term use, store at 2-8°C up to 1 week. For long term storage, store at -20°C in small aliquots to prevent freeze-thaw cycles.

Images



Western Blotting

Image 1. WB Suggested Anti-SSPN Antibody Titration: 0.2-1 ug/ml ELISA Titer: 1:312500 Positive Control: 721_B cell lysate