

Datasheet for ABIN2782667  
**anti-DGCR2 antibody (N-Term)**[Go to Product page](#)

## 1 Image

## Overview

Quantity:	100 µL
Target:	DGCR2 (DGS2)
Binding Specificity:	N-Term
Reactivity:	Human, Mouse, Rat, Cow, Guinea Pig, Dog, Horse
Host:	Rabbit
Clonality:	Polyclonal
Conjugate:	This DGCR2 antibody is un-conjugated
Application:	Western Blotting (WB)

## Product Details

Immunogen:	The immunogen is a synthetic peptide directed towards the N terminal region of human DGCR2
Sequence:	MVPKADSGAF LLLFLLVLTV TEPLRPELRC NPGQFACRSG TIQCIPLPWQ
Predicted Reactivity:	Cow: 100%, Dog: 100%, Guinea Pig: 100%, Horse: 93%, Human: 100%, Mouse: 100%, Rat: 100%
Characteristics:	This is a rabbit polyclonal antibody against DGCR2. It was validated on Western Blot using a cell lysate as a positive control.
Purification:	Affinity Purified

## Target Details

Target:	DGCR2 (DGS2)
Alternative Name:	DGCR2 ( <a href="#">DGS2 Products</a> )

## Target Details

Background:	<p>DGCR2 is the putative adhesion receptor that could be involved in cell-cell or cell-matrix interactions required for normal cell differentiation and migration. Deletions of the 22q11.2 have been associated with a wide range of developmental defects (notably DiGeorge syndrome, velocardiofacial syndrome, conotruncal anomaly face syndrome and isolated conotruncal cardiac defects) classified under the acronym CATCH 22. The DGCR2 gene encodes a novel putative adhesion receptor protein, which could play a role in neural crest cells migration, a process which has been proposed to be altered in DiGeorge syndrome.</p> <p>Alias Symbols: DGS-C, DKFZp686I1730, IDD, KIAA0163, LAN, SEZ-12</p> <p>Protein Interaction Partner: HNRNPD, SMURF2, DDIT3,</p> <p>Protein Size: 550</p>
Molecular Weight:	61 kDa
Gene ID:	9993
NCBI Accession:	<a href="#">NM_005137</a> , <a href="#">NP_005128</a>
UniProt:	<a href="#">P98153</a>

## Application Details

Application Notes:	Optimal working dilutions should be determined experimentally by the investigator.
Comment:	Antigen size: 550 AA
Restrictions:	For Research Use only

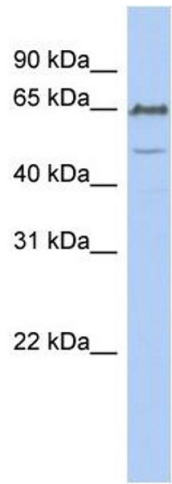
## Handling

Format:	Liquid
Concentration:	Lot specific
Buffer:	Liquid. Purified antibody supplied in 1x PBS buffer with 0.09 % (w/v) sodium azide and 2 % sucrose.
Preservative:	Sodium azide
Precaution of Use:	This product contains Sodium azide: a POISONOUS AND HAZARDOUS SUBSTANCE which should be handled by trained staff only.
Handling Advice:	Avoid repeated freeze-thaw cycles.
Storage:	-20 °C

Handling

Storage Comment: For short term use, store at 2-8°C up to 1 week. For long term storage, store at -20°C in small aliquots to prevent freeze-thaw cycles.

Images



Western Blotting

**Image 1.** WB Suggested Anti-DGCR2 Antibody Titration: 0.2-1 ug/ml ELISA Titer: 1:62500 Positive Control: SH-SY5Y cell lysate DGCR2 is strongly supported by BioGPS gene expression data to be expressed in Human SHSY5Y cells