

Datasheet for ABIN2782669
anti-ATP2A3 antibody (Middle Region)[Go to Product page](#)

2 Images

Overview

Quantity:	100 µL
Target:	ATP2A3
Binding Specificity:	Middle Region
Reactivity:	Human, Rat, Cow, Dog, Guinea Pig, Horse, Rabbit
Host:	Rabbit
Clonality:	Polyclonal
Conjugate:	This ATP2A3 antibody is un-conjugated
Application:	Western Blotting (WB)

Product Details

Immunogen:	The immunogen is a synthetic peptide directed towards the middle region of human ATP2A3
Sequence:	LISGWLFFRY LAIGVYVGLA TVAAATWWFV YDAEGPHINF YQLRNFLKCS
Predicted Reactivity:	Cow: 79%, Dog: 86%, Guinea Pig: 79%, Horse: 86%, Human: 100%, Rabbit: 77%, Rat: 79%
Characteristics:	This is a rabbit polyclonal antibody against ATP2A3. It was validated on Western Blot using a cell lysate as a positive control.
Purification:	Affinity Purified

Target Details

Target:	ATP2A3
Alternative Name:	ATP2A3 (ATP2A3 Products)

Target Details

Background:	<p>ATP2A3 is one of the SERCA Ca(2+)-ATPases, which are intracellular pumps located in the sarcoplasmic or endoplasmic reticula of muscle cells. This enzyme catalyzes the hydrolysis of ATP coupled with the translocation of calcium from the cytosol to the sarcoplasmic reticulum lumen, and is involved in calcium sequestration associated with muscular excitation and contraction. This gene encodes one of the SERCA Ca(2+)-ATPases, which are intracellular pumps located in the sarcoplasmic or endoplasmic reticula of muscle cells. This enzyme catalyzes the hydrolysis of ATP coupled with the translocation of calcium from the cytosol to the sarcoplasmic reticulum lumen, and is involved in calcium sequestration associated with muscular excitation and contraction. Alternative splicing results in multiple transcript variants encoding different isoforms.</p> <p>Alias Symbols: SERCA3</p> <p>Protein Interaction Partner: BCL2, UBC, BMI1, HDAC11, env, ATF2, CDK2, TCF3, IRS1, WRAP73,</p> <p>Protein Size: 999</p>
Molecular Weight:	109 kDa
Gene ID:	489
NCBI Accession:	NM_005173 , NP_005164
UniProt:	Q93084
Pathways:	Myometrial Relaxation and Contraction , Ribonucleoside Biosynthetic Process

Application Details

Application Notes:	Optimal working dilutions should be determined experimentally by the investigator.
Comment:	Antigen size: 999 AA
Restrictions:	For Research Use only

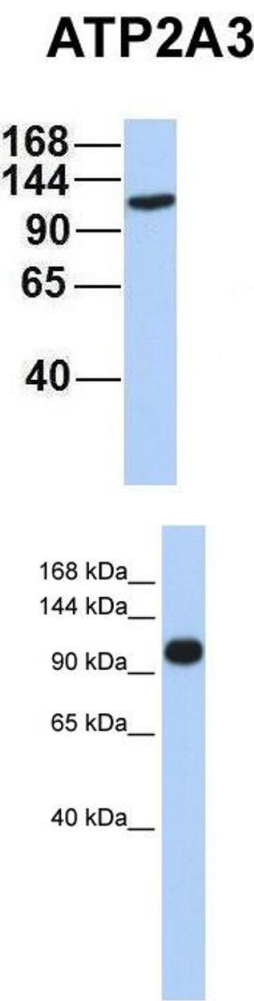
Handling

Format:	Liquid
Concentration:	Lot specific
Buffer:	Liquid. Purified antibody supplied in 1x PBS buffer with 0.09 % (w/v) sodium azide and 2 % sucrose.
Preservative:	Sodium azide
Precaution of Use:	This product contains Sodium azide: a POISONOUS AND HAZARDOUS SUBSTANCE which

Handling

	should be handled by trained staff only.
Handling Advice:	Avoid repeated freeze-thaw cycles.
Storage:	-20 °C
Storage Comment:	For short term use, store at 2-8°C up to 1 week. For long term storage, store at -20°C in small aliquots to prevent freeze-thaw cycles.

Images



Western Blotting

Image 1. Host: Rabbit Target Name: ATP2A3 Sample Type: MCF7 Antibody Dilution: 1.0ug/ml ATP2A3 is strongly supported by BioGPS gene expression data to be expressed in MCF7

Western Blotting

Image 2. WB Suggested Anti-ATP2A3 Antibody Titration: 0.2-1 ug/ml ELISA Titer: 1:312500 Positive Control: Jurkat cell lysate ATP2A3 is strongly supported by BioGPS gene expression data to be expressed in Human Jurkat cells