

Datasheet for ABIN2782671
anti-DCC antibody (Middle Region)[Go to Product page](#)

2 Images

Overview

Quantity:	100 µL
Target:	DCC
Binding Specificity:	Middle Region
Reactivity:	Human, Mouse, Rat, Rabbit, Dog, Guinea Pig, Horse, Zebrafish (Danio rerio)
Host:	Rabbit
Clonality:	Polyclonal
Conjugate:	This DCC antibody is un-conjugated
Application:	Western Blotting (WB)

Product Details

Immunogen:	The immunogen is a synthetic peptide directed towards the middle region of human DCC
Sequence:	PIGQMHPHPG SVTPQKNSNL LVIIIVTVGV ITVLVVVIVA VICTRRSSAQ
Predicted Reactivity:	Dog: 100%, Guinea Pig: 100%, Horse: 100%, Human: 100%, Mouse: 100%, Rabbit: 100%, Rat: 100%, Zebrafish: 100%
Characteristics:	This is a rabbit polyclonal antibody against DCC. It was validated on Western Blot.
Purification:	Affinity Purified

Target Details

Target:	DCC
Alternative Name:	DCC (DCC Products)

Target Details

Background:	<p>This gene encodes a netrin 1 receptor. The transmembrane protein is a member of the immunoglobulin superfamily of cell adhesion molecules, and mediates axon guidance of neuronal growth cones towards sources of netrin 1 ligand. The cytoplasmic tail interacts with the tyrosine kinases Src and focal adhesion kinase (FAK, also known as PTK2) to mediate axon attraction. The protein partially localizes to lipid rafts, and induces apoptosis in the absence of ligand. The protein functions as a tumor suppressor, and is frequently mutated or downregulated in colorectal cancer and esophageal carcinoma.</p> <p>Alias Symbols: CRC18, CRCR1, IGDCC1</p> <p>Protein Interaction Partner: UBC, ALB, BARD1, sina, UBI4, SIAH2, EIF4E3, EIF2A, EIF5A2, NTN1, RPL23, EIF2S2, EIF2B2, EIF2B4, EZR, RPS24, RPS13, RPS10, RPS6, RPS4X, RPL38, RPL28, RPL13, RPL5, PTK2, MAPK1, RPL10A, EIF3E, EIF4E, EIF2S3, EIF2B1, EIF1AX, ADORA2B, APPL1, CASP9, SIAH1, MAPK</p> <p>Protein Size: 1447</p>
Molecular Weight:	158 kDa
Gene ID:	1630
NCBI Accession:	NM_005215 , NP_005206
UniProt:	P43146
Pathways:	Regulation of Cell Size

Application Details

Application Notes:	Optimal working dilutions should be determined experimentally by the investigator.
Comment:	Antigen size: 1447 AA
Restrictions:	For Research Use only

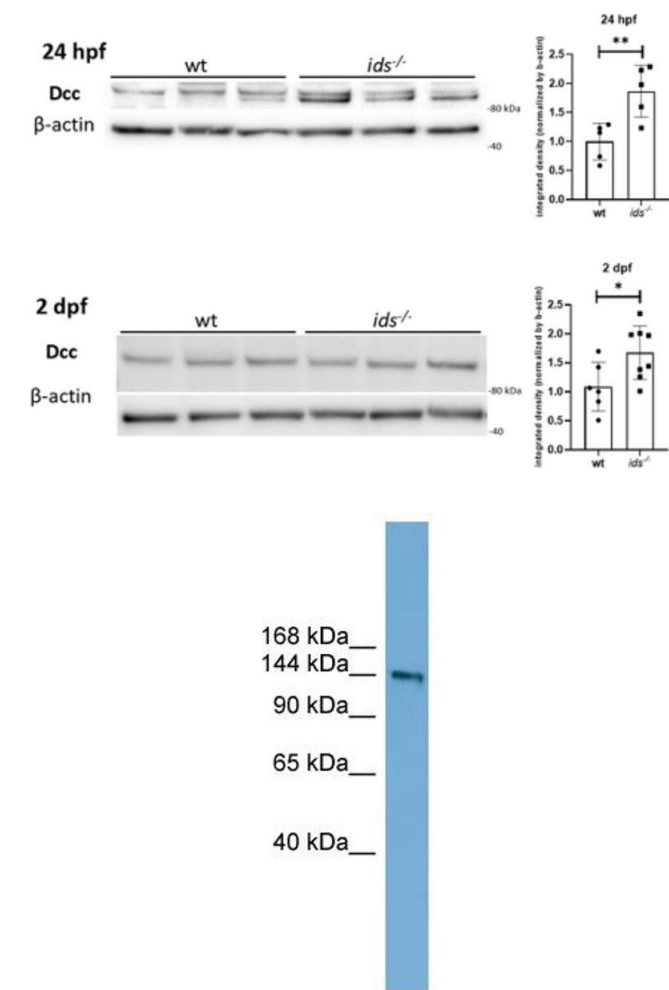
Handling

Format:	Liquid
Concentration:	Lot specific
Buffer:	Liquid. Purified antibody supplied in 1x PBS buffer with 0.09 % (w/v) sodium azide and 2 % sucrose.
Preservative:	Sodium azide
Precaution of Use:	This product contains Sodium azide: a POISONOUS AND HAZARDOUS SUBSTANCE which

Handling

	should be handled by trained staff only.
Handling Advice:	Avoid repeated freeze-thaw cycles.
Storage:	-20 °C
Storage Comment:	For short term use, store at 2-8°C up to 1 week. For long term storage, store at -20°C in small aliquots to prevent freeze-thaw cycles.

Images



Western Blotting

Image 1. Representative western blot for Dcc at 24 hpf (left) and 2 dpf (right). In both cases, lysates from whole dissected heads showed Dcc upregulation in *ids* mutant fish-derived samples with respect to wild type ones (n= at least 5 biological replicates, pools of 20 dissected heads). Source: 10.21203/rs.3.rs-3552717/v1

Western Blotting

Image 2. WB Suggested Anti-DCC Antibody Titration: 0.2-1 ug/ml Positive Control: ACHN cell lysate