

Datasheet for ABIN2782673
anti-DNASE1 antibody (N-Term)[Go to Product page](#)

3 Images

Overview

Quantity:	100 µL
Target:	DNASE1
Binding Specificity:	N-Term
Reactivity:	Human, Rat, Cow
Host:	Rabbit
Clonality:	Polyclonal
Conjugate:	This DNASE1 antibody is un-conjugated
Application:	Western Blotting (WB)

Product Details

Immunogen:	The immunogen is a synthetic peptide directed towards the N terminal region of human DNASE1
Sequence:	GKLLDNLNQD APDTYHYVVS EPLGRNSYKE RYLFVYRPDQ VSAVDSYYDD
Predicted Reactivity:	Cow: 79%, Human: 100%, Rat: 79%
Characteristics:	This is a rabbit polyclonal antibody against DNASE1. It was validated on Western Blot using a cell lysate as a positive control.
Purification:	Affinity Purified

Target Details

Target:	DNASE1
---------	--------

Target Details

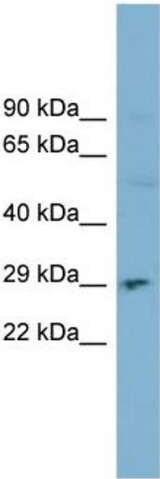
Alternative Name:	DNASE1 (DNASE1 Products)
Background:	<p>This gene encodes a member of the DNase family. This protein is stored in the zymogen granules of the nuclear envelope and functions by cleaving DNA in an endonucleolytic manner.</p> <p>At least six autosomal codominant alleles have been characterized, DNASE1*1</p> <p>Alias Symbols: DKFZp686H0155, DNL1, DRNI, FLJ38093, FLJ44902</p> <p>Protein Interaction Partner: ACTA1, ACTB, ACTA2, ACTG1,</p> <p>Protein Size: 282</p>
Molecular Weight:	31 kDa
Gene ID:	1773
NCBI Accession:	NM_005223 , NP_005214
UniProt:	P24855

Application Details

Application Notes:	Optimal working dilutions should be determined experimentally by the investigator.
Comment:	Antigen size: 282 AA
Restrictions:	For Research Use only

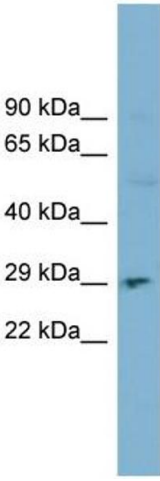
Handling

Format:	Liquid
Concentration:	Lot specific
Buffer:	Liquid. Purified antibody supplied in 1x PBS buffer with 0.09 % (w/v) sodium azide and 2 % sucrose.
Preservative:	Sodium azide
Precaution of Use:	This product contains Sodium azide: a POISONOUS AND HAZARDOUS SUBSTANCE which should be handled by trained staff only.
Handling Advice:	Avoid repeated freeze-thaw cycles.
Storage:	-20 °C
Storage Comment:	For short term use, store at 2-8°C up to 1 week. For long term storage, store at -20°C in small aliquots to prevent freeze-thaw cycles.



Western Blotting

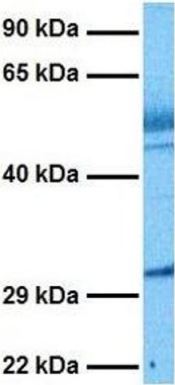
Image 1. WB Suggested Anti-DNASE1 Antibody Titration: 0.2-1 ug/ml ELISA Titer: 1:62500 Positive Control: PANC1 cell lysate DNASE1 is supported by BioGPS gene expression data to be expressed in PANC1



Western Blotting

Image 2. WB Suggested Anti-DNASE1 Antibody Titration: 0.2-1 ug/mL ELISA Titer: 1:2500 Positive Control: PANC1 cell lysate DNASE1 is supported by BioGPS gene expression data to be expressed in PANC1

DNASE1



Western Blotting

Image 3. Host: Rabbit Target Name: DNASE1 Sample Tissue: Human Lung Tumor Antibody Dilution: 1.0ug/ml