

Datasheet for ABIN2782680
anti-LMAN1 antibody (N-Term)[Go to Product page](#)

4 Images

Overview

Quantity:	100 µL
Target:	LMAN1
Binding Specificity:	N-Term
Reactivity:	Human, Mouse, Rat, Dog, Pig, Rabbit, Cow, Zebrafish (Danio rerio), Horse, Guinea Pig
Host:	Rabbit
Clonality:	Polyclonal
Conjugate:	This LMAN1 antibody is un-conjugated
Application:	Western Blotting (WB)

Product Details

Immunogen:	The immunogen is a synthetic peptide directed towards the N terminal region of human LMAN1
Sequence:	DPAVALPHRR FEYKYSFKGP HLVQSDGTVP FWAHAGNAIP SSDQIRVAPS
Predicted Reactivity:	Cow: 100%, Dog: 100%, Guinea Pig: 93%, Horse: 100%, Human: 100%, Mouse: 100%, Pig: 100%, Rabbit: 93%, Rat: 100%, Zebrafish: 93%
Characteristics:	This is a rabbit polyclonal antibody against LMAN1. It was validated on Western Blot using a cell lysate as a positive control.
Purification:	Affinity Purified

Target Details

Target:	LMAN1
---------	-------

Target Details

Alternative Name: LMAN1 ([LMAN1 Products](#))

Background: LMAN1 is a type I integral membrane protein localized in the intermediate region between the endoplasmic reticulum and the Golgi, presumably recycling between the two compartments. The protein is a mannose-specific lectin and is a member of a novel family of plant lectin homologs in the secretory pathway of animal cells. Mutations in its gene are associated with a coagulation defect. Using positional cloning, its gene was identified as the disease gene leading to combined factor V-factor VIII deficiency, a rare, autosomal recessive disorder in which both coagulation factors V and VIII are diminished. The protein encoded by this gene is a type I integral membrane protein localized in the intermediate region between the endoplasmic reticulum and the Golgi, presumably recycling between the two compartments. The protein is a mannose-specific lectin and is a member of a novel family of plant lectin homologs in the secretory pathway of animal cells. Mutations in the gene are associated with a coagulation defect. Using positional cloning, the gene was identified as the disease gene leading to combined factor V-factor VIII deficiency, a rare, autosomal recessive disorder in which both coagulation factors V and VIII are diminished. Publication Note: This RefSeq record includes a subset of the publications that are available for this gene. Please see the Entrez Gene record to access additional publications.

Alias Symbols: ERGIC-53, ERGIC53, F5F8D, FMFD1, MCFD1, MR60, gp58

Protein Interaction Partner: UBC, NEDD8, YIPF3, env, PIGS, TMED2, YBX1, HSP90AA1, HNRNPU, APP, UBXN6, RAB3GAP2, RAB3GAP1, COPE, TUBB4B, TUBB3, COPB2, VCP, DNAJC7, P4HB, HSPA8, HSPA1A, COPB1, COPA, BCAP29, BCAP31, HLA-A, CANX, ELAVL1, MCFD2, F8,

Protein Size: 510

Molecular Weight: 54 kDa

Gene ID: 3998

NCBI Accession: [NM_005570](#), [NP_005561](#)

UniProt: [P49257](#)

Application Details

Application Notes: Optimal working dilutions should be determined experimentally by the investigator.

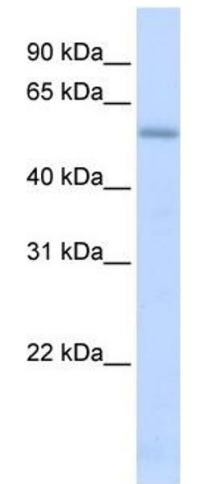
Comment: Antigen size: 510 AA

Restrictions: For Research Use only

Handling

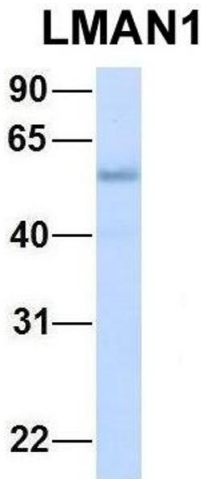
Format:	Liquid
Concentration:	Lot specific
Buffer:	Liquid. Purified antibody supplied in 1x PBS buffer with 0.09 % (w/v) sodium azide and 2 % sucrose.
Preservative:	Sodium azide
Precaution of Use:	This product contains Sodium azide: a POISONOUS AND HAZARDOUS SUBSTANCE which should be handled by trained staff only.
Handling Advice:	Avoid repeated freeze-thaw cycles.
Storage:	-20 °C
Storage Comment:	For short term use, store at 2-8°C up to 1 week. For long term storage, store at -20°C in small aliquots to prevent freeze-thaw cycles.

Images



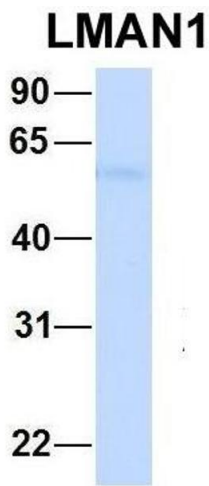
Western Blotting

Image 1. WB Suggested Anti-LMAN1 Antibody Titration: 0.2-1 ug/ml ELISA Titer: 1:62500 Positive Control: Human heart



Western Blotting

Image 2. Host: Rabbit Target Name: CHAD Sample Type: Human Adult Placenta Antibody Dilution: 1.0ug/ml



Western Blotting

Image 3. Host: Rabbit Target Name: FAM46C Sample Type:
Human Fetal Liver Antibody Dilution: 1.0ug/ml

Please check the [product details page](#) for more images. Overall 4 images are available for ABIN2782680.