



[Go to Product page](#)

Datasheet for ABIN2782684
anti-DLL1 antibody (N-Term)

5 Images

2 Publications

Overview

Quantity:	100 µL
Target:	DLL1
Binding Specificity:	N-Term
Reactivity:	Human, Mouse, Rat, Cow, Rabbit, Pig
Host:	Rabbit
Clonality:	Polyclonal
Conjugate:	This DLL1 antibody is un-conjugated
Application:	Western Blotting (WB), Immunohistochemistry (IHC)

Product Details

Immunogen:	The immunogen is a synthetic peptide directed towards the N terminal region of human DLL1
Sequence:	GSRCALALAV LSALLCQVWS SGVFELKLQE FVNKKGLLGN RNCCRGGAGP
Predicted Reactivity:	Cow: 100%, Human: 100%, Mouse: 100%, Pig: 100%, Rabbit: 93%, Rat: 100%
Characteristics:	This is a rabbit polyclonal antibody against DLL1. It was validated on Western Blot using a cell lysate as a positive control.
Purification:	Affinity Purified

Target Details

Target:	DLL1
Alternative Name:	DLL1 (DLL1 Products)

Target Details

Background: DLL1 is a human homolog of the Notch Delta ligand and is a member of the delta/serrate/jagged family. It plays a role in mediating cell fate decisions during hematopoiesis. It may play a role in cell-to-cell communication. DLL1 is a human homolog of the Notch Delta ligand and is a member of the delta/serrate/jagged family. It plays a role in mediating cell fate decisions during hematopoiesis. It may play a role in cell-to-cell communication. Publication Note: This RefSeq record includes a subset of the publications that are available for this gene. Please see the Entrez Gene record to access additional publications.
Alias Symbols: DELTA1, Delta, DL1
Protein Interaction Partner: EPN1, UBC, MIB1, MAGI2, CNKSR3, POFUT1, DLL1, MFNG, ADAM10, NOTCH3, NOTCH2, NOTCH1, NOV, PSEN1, MAGI1,
Protein Size: 723

Molecular Weight: 78 kDa

Gene ID: 28514

NCBI Accession: [NM_005618](#), [NP_005609](#)

UniProt: [O00548](#)

Pathways: [Notch Signaling](#), [Stem Cell Maintenance](#)

Application Details

Application Notes: Optimal working dilutions should be determined experimentally by the investigator.

Comment: Antigen size: 723 AA

Restrictions: For Research Use only

Handling

Format: Liquid

Concentration: Lot specific

Buffer: Liquid. Purified antibody supplied in 1x PBS buffer with 0.09 % (w/v) sodium azide and 2 % sucrose.

Preservative: Sodium azide

Precaution of Use: This product contains Sodium azide: a POISONOUS AND HAZARDOUS SUBSTANCE which should be handled by trained staff only.

Handling Advice: Avoid repeated freeze-thaw cycles.

Handling

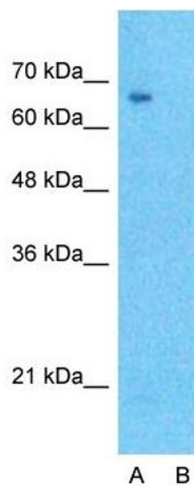
Storage: -20 °C

Storage Comment: For short term use, store at 2-8°C up to 1 week. For long term storage, store at -20°C in small aliquots to prevent freeze-thaw cycles.

Publications

Product cited in: Weiner, Marganski, Wu, Altschuler, Kirschner: "An actin-based wave generator organizes cell motility." in: **PLoS biology**, Vol. 5, Issue 9, pp. e221, (2007) ([PubMed](#)).

Images



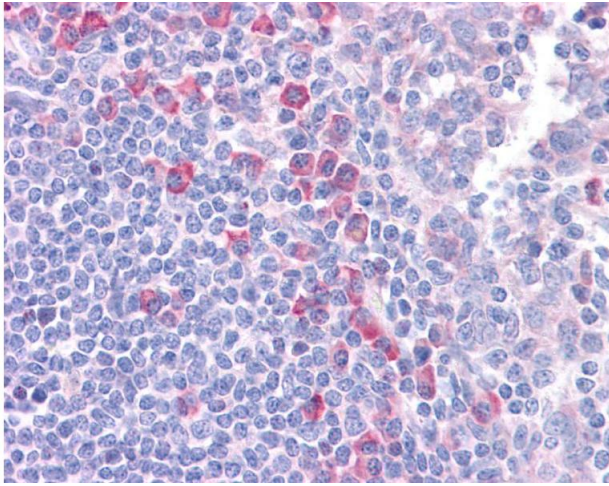
Western Blotting

Image 1. Host: Rabbit Target Name: DLL1 Sample Type: HeLa Lane A: Primary Antibody Lane B: Primary Antibody + Blocking Peptide Primary Antibody Concentration: 1ug/ml Peptide Concentration: 5ug/ml Lysate Quantity: 25ug/lane/lane Gel Concentration: 0.12



Western Blotting

Image 2. WB Suggested Anti-DLL1 Antibody Titration: 0.2-1 ug/ml ELISA Titer: 1:1562500 Positive Control: HeLa cell lysate



Immunohistochemistry

Image 3.

Please check the [product details page](#) for more images. Overall 5 images are available for ABIN2782684.