

Datasheet for ABIN2782693
anti-BCAP31 antibody (Middle Region)[Go to Product page](#)

4 Images

Overview

Quantity:	100 µL
Target:	BCAP31
Binding Specificity:	Middle Region
Reactivity:	Human, Mouse, Rat, Dog, Cow, Guinea Pig, Horse, Rabbit, Zebrafish (Danio rerio)
Host:	Rabbit
Clonality:	Polyclonal
Conjugate:	This BCAP31 antibody is un-conjugated
Application:	Western Blotting (WB)

Product Details

Immunogen:	The immunogen is a synthetic peptide directed towards the middle region of human BCAP31
Sequence:	STKQKLEKAE NQVLAMRKQS EGLTKEYDRL LEEHAKLQAA VDGPMDDKKEE
Predicted Reactivity:	Cow: 93%, Dog: 100%, Guinea Pig: 93%, Horse: 93%, Human: 100%, Mouse: 100%, Rabbit: 92%, Rat: 100%, Zebrafish: 92%
Characteristics:	This is a rabbit polyclonal antibody against BCAP31. It was validated on Western Blot using a cell lysate as a positive control.
Purification:	Affinity Purified

Target Details

Target:	BCAP31
---------	--------

Target Details

Alternative Name:	BCAP31 (BCAP31 Products)
Background:	<p>BCAP31 is a member of the B-cell receptor associated protein 31 superfamily. It is a multi-pass transmembrane protein of the endoplasmic reticulum that is involved in the anterograde transport of membrane proteins from the endoplasmic reticulum to the Golgi and in the caspase 8-mediated apoptosis. Microdeletions in this gene are associated with the contiguous ABCD1/DXS1375E deletion syndrome.</p> <p>Alias Symbols: 6C6-AG, BAP31, CDM, DXS1357E</p> <p>Protein Interaction Partner: GPRIN2, UBC, COX2, ITGAM, RPA3, RPA2, RPA1, YWHAQ, ATP4A, env, PGRMC1, UBL4A, KLK10, SERPINF2, ATF2, CASP8, CANX, VKORC1, nef, APP, Htt, PTPLB, FIS1, MYH10, HLA-A, BCL2L1, ACTG1, DERL1, BCAP29, BFAR, SEC61A1, TRAM1, SEC61B, BCAP31, RNF5, LMAN1, CFTR, Copa</p> <p>Protein Size: 246</p>
Molecular Weight:	28 kDa
Gene ID:	10134
NCBI Accession:	NM_005745 , NP_005736
UniProt:	P51572
Pathways:	Positive Regulation of Endopeptidase Activity

Application Details

Application Notes:	Optimal working dilutions should be determined experimentally by the investigator.
Comment:	Antigen size: 246 AA
Restrictions:	For Research Use only

Handling

Format:	Liquid
Concentration:	Lot specific
Buffer:	Liquid. Purified antibody supplied in 1x PBS buffer with 0.09 % (w/v) sodium azide and 2 % sucrose.
Preservative:	Sodium azide
Precaution of Use:	This product contains Sodium azide: a POISONOUS AND HAZARDOUS SUBSTANCE which should be handled by trained staff only.

Handling

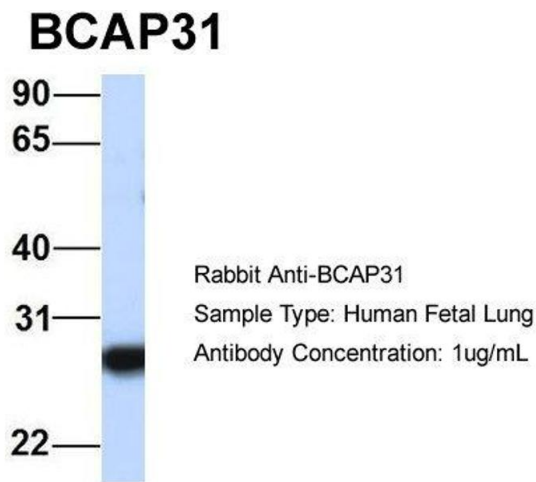
Handling Advice:	Avoid repeated freeze-thaw cycles.
Storage:	-20 °C
Storage Comment:	For short term use, store at 2-8°C up to 1 week. For long term storage, store at -20°C in small aliquots to prevent freeze-thaw cycles.

Images



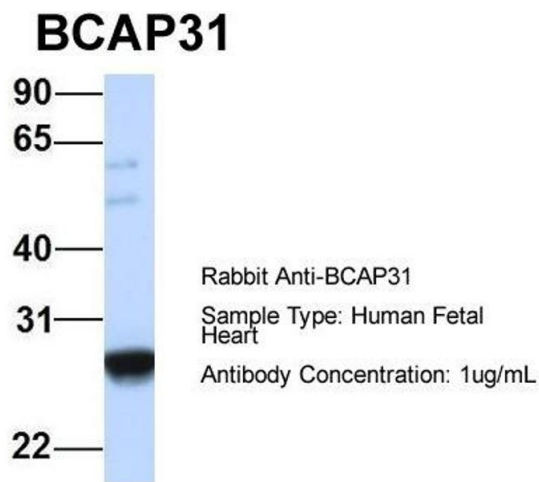
Western Blotting

Image 1. WB Suggested Anti-BCAP31 Antibody Titration: 0.2-1 ug/ml ELISA Titer: 1:1562500 Positive Control: 293T cell lysate



Western Blotting

Image 2. Host: Rabbit Target Name: BCAP31 Sample Type: Human Fetal Lung Antibody Dilution: 1.0ug/ml



Western Blotting

Image 3. Host: Rabbit Target Name: BCAP31 Sample Type: Human Fetal Heart Antibody Dilution: 1.0ug/ml

Please check the [product details page](#) for more images. Overall 4 images are available for ABIN2782693.