

Datasheet for ABIN2782701
anti-MAN2A2 antibody (N-Term)[Go to Product page](#)

1 Image

Overview

Quantity:	100 µL
Target:	MAN2A2
Binding Specificity:	N-Term
Reactivity:	Human, Mouse, Horse, Rabbit, Rat, Cow, Dog, Guinea Pig
Host:	Rabbit
Clonality:	Polyclonal
Conjugate:	This MAN2A2 antibody is un-conjugated
Application:	Western Blotting (WB)

Product Details

Immunogen:	The immunogen is a synthetic peptide corresponding to a region of Mouse
Sequence:	PQDCQFALGG RGQKPELQML TVSEDLPF DN VEGGVWRQGF DISYSPNDWD
Predicted Reactivity:	Cow: 93%, Dog: 100%, Guinea Pig: 100%, Horse: 93%, Human: 100%, Mouse: 100%, Rabbit: 100%, Rat: 100%
Characteristics:	This is a rabbit polyclonal antibody against Man2a2. It was validated on Western Blot.
Purification:	Affinity Purified

Target Details

Target:	MAN2A2
Alternative Name:	Man2a2 (MAN2A2 Products)

Target Details

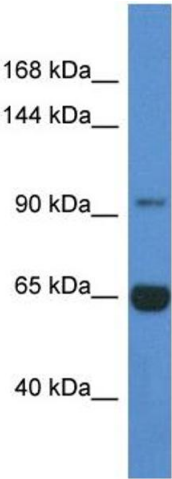
Background:	The function of this protein remains unknown. Alias Symbols: 1700052O22Rik, 4931438M07Rik, AI480988, MX, Man IIX Protein Size: 827
Molecular Weight:	93 kDa
Gene ID:	140481
NCBI Accession:	NM_172903 , NP_766491
UniProt:	Q8BRK9

Application Details

Application Notes:	Optimal working dilutions should be determined experimentally by the investigator.
Comment:	Antigen size: 827 AA
Restrictions:	For Research Use only

Handling

Format:	Liquid
Concentration:	Lot specific
Buffer:	Liquid. Purified antibody supplied in 1x PBS buffer with 0.09 % (w/v) sodium azide and 2 % sucrose.
Preservative:	Sodium azide
Precaution of Use:	This product contains Sodium azide: a POISONOUS AND HAZARDOUS SUBSTANCE which should be handled by trained staff only.
Handling Advice:	Avoid repeated freeze-thaw cycles.
Storage:	-20 °C
Storage Comment:	For short term use, store at 2-8°C up to 1 week. For long term storage, store at -20°C in small aliquots to prevent freeze-thaw cycles.



Western Blotting

Image 1. WB Suggested Anti-Man2a2 Antibody Titration:
1.0 ug/ml Positive Control: Mouse Liver