

Datasheet for ABIN2782709
anti-LRRN2 antibody (Middle Region)[Go to Product page](#)

1 Image

Overview

Quantity:	100 µL
Target:	LRRN2
Binding Specificity:	Middle Region
Reactivity:	Human, Mouse, Rat, Pig, Cow, Horse, Dog
Host:	Rabbit
Clonality:	Polyclonal
Conjugate:	This LRRN2 antibody is un-conjugated
Application:	Western Blotting (WB)

Product Details

Immunogen:	The immunogen is a synthetic peptide directed towards the middle region of human LRRN2
Sequence:	RVPRRALEQV PGLKFLDLNK NPLQRVGPGD FANMLHLKEL GLNNMEELVS
Predicted Reactivity:	Cow: 100%, Dog: 100%, Horse: 100%, Human: 100%, Mouse: 100%, Pig: 100%, Rat: 100%
Characteristics:	This is a rabbit polyclonal antibody against LRRN2. It was validated on Western Blot using a cell lysate as a positive control.
Purification:	Affinity Purified

Target Details

Target:	LRRN2
Alternative Name:	LRRN2 (LRRN2 Products)

Target Details

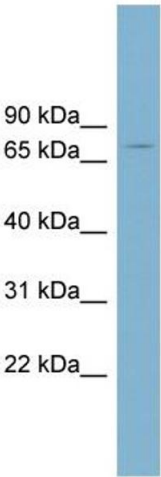
Background:	<p>The protein encoded by this gene belongs to the leucine-rich repeat superfamily. This gene was found to be amplified and overexpressed in malignant gliomas. The encoded protein has homology with other proteins that function as cell-adhesion molecules or a</p> <p>Alias Symbols: FIGLER7, GAC1, LRANK1, LRRN5</p> <p>Protein Interaction Partner: NEUROD4,</p> <p>Protein Size: 713</p>
Molecular Weight:	79 kDa
Gene ID:	10446
NCBI Accession:	NM_006338 , NP_006329
UniProt:	O75325

Application Details

Application Notes:	Optimal working dilutions should be determined experimentally by the investigator.
Comment:	Antigen size: 713 AA
Restrictions:	For Research Use only

Handling

Format:	Liquid
Concentration:	Lot specific
Buffer:	Liquid. Purified antibody supplied in 1x PBS buffer with 0.09 % (w/v) sodium azide and 2 % sucrose.
Preservative:	Sodium azide
Precaution of Use:	This product contains Sodium azide: a POISONOUS AND HAZARDOUS SUBSTANCE which should be handled by trained staff only.
Handling Advice:	Avoid repeated freeze-thaw cycles.
Storage:	-20 °C
Storage Comment:	For short term use, store at 2-8°C up to 1 week. For long term storage, store at -20°C in small aliquots to prevent freeze-thaw cycles.



Western Blotting

Image 1. WB Suggested Anti-LRRN2 Antibody Titration:
0.2-1 ug/ml Positive Control: THP-1 cell lysate