

Datasheet for ABIN2782713
anti-SPTLC1 antibody (Middle Region)

3 Images

[Go to Product page](#)

Overview

Quantity:	100 µL
Target:	SPTLC1
Binding Specificity:	Middle Region
Reactivity:	Human, Mouse, Rat, Cow, Rabbit, Guinea Pig, Horse, Zebrafish (Danio rerio), Dog, Saccharomyces cerevisiae
Host:	Rabbit
Clonality:	Polyclonal
Conjugate:	This SPTLC1 antibody is un-conjugated
Application:	Western Blotting (WB), Immunohistochemistry (IHC)

Product Details

Immunogen:	The immunogen is a synthetic peptide directed towards the middle region of human SPTLC1
Sequence:	ICPLPELVKL KYKYKARIFL EESLSFGVLG EHGRGVTEHY GINIDDIDLI
Predicted Reactivity:	Cow: 93%, Dog: 93%, Guinea Pig: 100%, Horse: 93%, Human: 100%, Mouse: 100%, Rabbit: 100%, Rat: 100%, Yeast: 79%, Zebrafish: 93%
Characteristics:	This is a rabbit polyclonal antibody against SPTLC1. It was validated on Western Blot and immunohistochemistry.
Purification:	Affinity Purified

Target Details

Target:	SPTLC1
---------	--------

Target Details

Alternative Name:	SPTLC1 (SPTLC1 Products)
Background:	<p>Serine palmitoyltransferase, which consists of two different subunits, is the key enzyme in sphingolipid biosynthesis. It converts L-serine and palmitoyl-CoA to 3-oxosphinganine with pyridoxal 5'-phosphate as a cofactor. SPTLC1 is the long chain base subunit 1 of serine palmitoyltransferase. Mutations in SPTLC1 gene were identified in patients with hereditary sensory neuropathy type 1. Serine palmitoyltransferase, which consists of two different subunits, is the key enzyme in sphingolipid biosynthesis. It converts L-serine and palmitoyl-CoA to 3-oxosphinganine with pyridoxal 5'-phosphate as a cofactor. The product of this gene is the long chain base subunit 1 of serine palmitoyltransferase. Mutations in this gene were identified in patients with hereditary sensory neuropathy type 1. Alternatively spliced variants encoding different isoforms have been identified.</p> <p>Alias Symbols: HSAN, HSAN1, HSN1, LBC1, LCB1, MGC14645, SPT1, SPTI, hLCB1</p> <p>Protein Interaction Partner: UBC, FBXO6, EGFR, ADRB2, CFTR, ABCA1, UBD, AUP1, MYC, ATG4C, ORMDL3, SPTLC2, C20orf24, MAGED1, RGS20,</p> <p>Protein Size: 473</p>
Molecular Weight:	53 kDa
Gene ID:	10558
NCBI Accession:	NM_006415 , NP_006406
UniProt:	O15269

Application Details

Application Notes:	Optimal working dilutions should be determined experimentally by the investigator.
Comment:	Antigen size: 473 AA
Restrictions:	For Research Use only

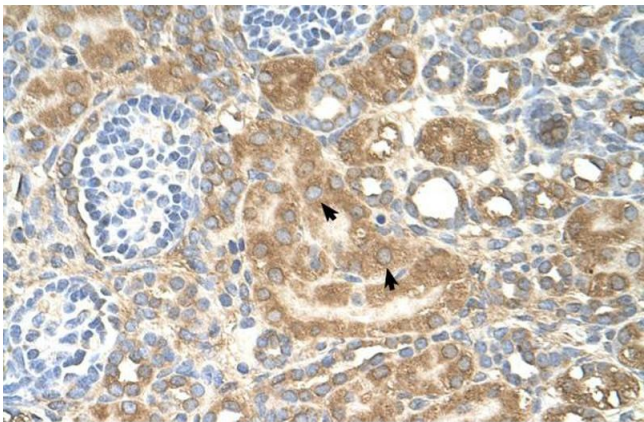
Handling

Format:	Liquid
Concentration:	Lot specific
Buffer:	Liquid. Purified antibody supplied in 1x PBS buffer with 0.09 % (w/v) sodium azide and 2 % sucrose.
Preservative:	Sodium azide

Handling

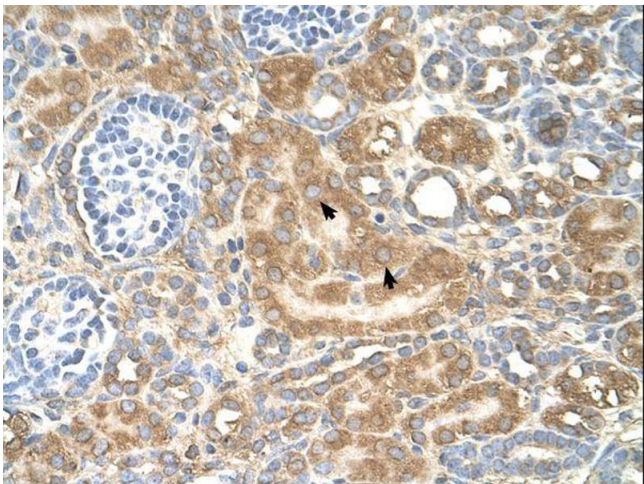
Precaution of Use:	This product contains Sodium azide: a POISONOUS AND HAZARDOUS SUBSTANCE which should be handled by trained staff only.
Handling Advice:	Avoid repeated freeze-thaw cycles.
Storage:	-20 °C
Storage Comment:	For short term use, store at 2-8°C up to 1 week. For long term storage, store at -20°C in small aliquots to prevent freeze-thaw cycles.

Images



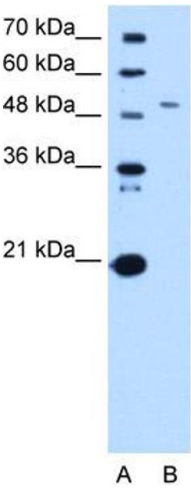
Immunohistochemistry

Image 1. Human kidney



Immunohistochemistry

Image 2.



Western Blotting

Image 3. WB Suggested Anti-SPTLC1 Antibody Titration:
0.5ug/ml Positive Control: HepG2 cell lysate