

Datasheet for ABIN2782723  
**anti-Corin antibody (C-Term)**



[Go to Product page](#)

1 Image

## Overview

Quantity:	100 µL
Target:	Corin (CORIN)
Binding Specificity:	C-Term
Reactivity:	Human, Rat, Mouse, Cow, Horse, Guinea Pig, Rabbit, Pig
Host:	Rabbit
Clonality:	Polyclonal
Conjugate:	This Corin antibody is un-conjugated
Application:	Western Blotting (WB)

## Product Details

Immunogen:	The immunogen is a synthetic peptide directed towards the C terminal region of human CORIN
Sequence:	HPRYSRAVVD YDISIVELSE DISETGYVRP VCLPNPEQWL EPDTYCYITG
Predicted Reactivity:	Cow: 79%, Guinea Pig: 79%, Horse: 86%, Human: 100%, Mouse: 79%, Pig: 86%, Rabbit: 86%, Rat: 92%
Characteristics:	This is a rabbit polyclonal antibody against CORIN. It was validated on Western Blot using a cell lysate as a positive control.
Purification:	Protein A purified

## Target Details

Target:	Corin (CORIN)
---------	---------------

## Target Details

Alternative Name:	CORIN ( <a href="#">CORIN Products</a> )
Background:	<p>CORIN is a member of the type II transmembrane serine protease class of the trypsin superfamily. Members of this family are composed of multiple structurally distinct domains. CORIN converts pro-atrial natriuretic peptide to biologically active atrial natriuretic peptide, a cardiac hormone that regulates blood volume and pressure. This protein may also function as a pro-brain-type natriuretic peptide convertase.</p> <p>Alias Symbols: ATC2, CRN, Lrp4, MGC119742, TMPRSS10</p> <p>Protein Size: 685</p>
Molecular Weight:	74 kDa
Gene ID:	10699
NCBI Accession:	<a href="#">NM_006587</a>
UniProt:	<a href="#">Q9Y5Q5</a>
Pathways:	<a href="#">Regulation of Systemic Arterial Blood Pressure by Hormones</a>

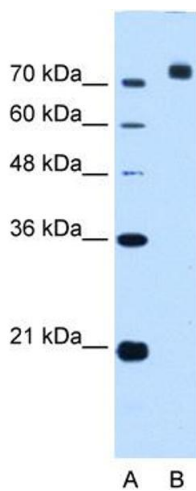
## Application Details

Application Notes:	Optimal working dilutions should be determined experimentally by the investigator.
Comment:	Antigen size: 685 AA
Restrictions:	For Research Use only

## Handling

Format:	Liquid
Concentration:	Lot specific
Buffer:	Liquid. Purified antibody supplied in 1x PBS buffer with 0.09 % (w/v) sodium azide and 2 % sucrose.
Preservative:	Sodium azide
Precaution of Use:	This product contains Sodium azide: a POISONOUS AND HAZARDOUS SUBSTANCE which should be handled by trained staff only.
Handling Advice:	Avoid repeated freeze-thaw cycles.
Storage:	-20 °C
Storage Comment:	For short term use, store at 2-8°C up to 1 week. For long term storage, store at -20°C in small

aliquots to prevent freeze-thaw cycles.



Western Blotting

**Image 1.** WB Suggested Anti-CORIN Antibody Titration:  
2.5ug/ml Positive Control: HepG2 cell lysate