



[Go to Product page](#)

Datasheet for ABIN2782728

anti-PGRMC1 antibody (N-Term)

2 Images

Overview

Quantity:	100 µL
Target:	PGRMC1
Binding Specificity:	N-Term
Reactivity:	Human, Mouse, Rat, Rabbit, Cow, Dog, Horse, Pig
Host:	Rabbit
Clonality:	Polyclonal
Conjugate:	This PGRMC1 antibody is un-conjugated
Application:	Western Blotting (WB), Immunohistochemistry (IHC)

Product Details

Immunogen:	The immunogen is a synthetic peptide directed towards the N terminal region of human PGRMC1
Sequence:	MAAEDVVATG ADPSDLESGG LLHEIFTSPL NLLLLGLCIF LLYKIVRGDQ
Predicted Reactivity:	Cow: 79%, Dog: 86%, Horse: 86%, Human: 100%, Mouse: 93%, Pig: 86%, Rabbit: 86%, Rat: 93%
Characteristics:	This is a rabbit polyclonal antibody against PGRMC1. It was validated on Western Blot and immunohistochemistry.
Purification:	Affinity Purified

Target Details

Target:	PGRMC1
---------	--------

Target Details

Alternative Name:	PGRMC1 (PGRMC1 Products)
Background:	<p>Progesterone binding protein is a putative steroid membrane receptor. The protein is expressed predominantly in the liver and kidney. Progesterone binding protein is a putative steroid membrane receptor. The protein is expressed predominantly in the liver and kidney. Publication Note: This RefSeq record includes a subset of the publications that are available for this gene. Please see the Entrez Gene record to access additional publications. Progesterone binding protein is a putative steroid membrane receptor. The protein is expressed predominantly in the liver and kidney. Publication Note: This RefSeq record includes a subset of the publications that are available for this gene. Please see the Entrez Gene record to access additional publications.</p> <p>Alias Symbols: HPR6.6, MPR</p> <p>Protein Interaction Partner: PCSK9, CREB3L1, UBC, MDM2, RPA3, RPA2, RPA1, ADRB2, UBL4A, env, BCAP31, INSIG1, CYP3A4, CYP2C8, CANX, POR, MTNR1A, FKBP8, GCN1L1, SPCS2, SRSF3, RPS20, ILF3, HNRNPU, HNRNPH1, COPS5, CUL3, CENPU, PAM16, RNF13, SCAP, SFXN1, EFHD1, DNAAF5, ABCD3, DDOST,</p> <p>Protein Size: 195</p>
Molecular Weight:	22 kDa
Gene ID:	10857
NCBI Accession:	NM_006667 , NP_006658
UniProt:	O00264

Application Details

Application Notes:	Optimal working dilutions should be determined experimentally by the investigator.
Comment:	Antigen size: 195 AA
Restrictions:	For Research Use only

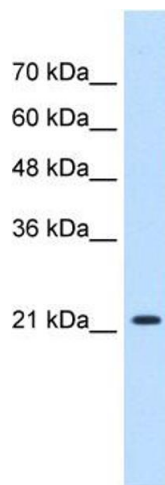
Handling

Format:	Liquid
Concentration:	Lot specific
Buffer:	Liquid. Purified antibody supplied in 1x PBS buffer with 0.09 % (w/v) sodium azide and 2 % sucrose.
Preservative:	Sodium azide

Handling

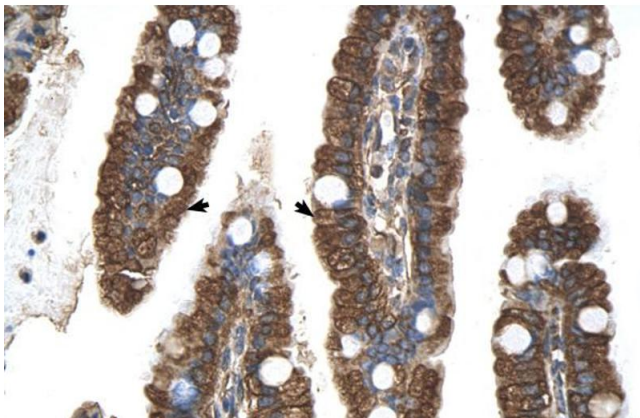
Precaution of Use:	This product contains Sodium azide: a POISONOUS AND HAZARDOUS SUBSTANCE which should be handled by trained staff only.
Handling Advice:	Avoid repeated freeze-thaw cycles.
Storage:	-20 °C
Storage Comment:	For short term use, store at 2-8°C up to 1 week. For long term storage, store at -20°C in small aliquots to prevent freeze-thaw cycles.

Images



Western Blotting

Image 1. WB Suggested Anti-PGRMC1 Antibody Titration:
0.2-1 ug/ml Positive Control: HepG2 cell lysate



Immunohistochemistry

Image 2. Human Intestine