

Datasheet for ABIN2782731

## anti-MAN1A2 antibody (Middle Region)



[Go to Product page](#)

### 1 Image

#### Overview

Quantity:	100 µL
Target:	MAN1A2
Binding Specificity:	Middle Region
Reactivity:	Human, Mouse, Rat, Cow, Dog, Guinea Pig, Horse, Rabbit, Zebrafish (Danio rerio)
Host:	Rabbit
Clonality:	Polyclonal
Conjugate:	This MAN1A2 antibody is un-conjugated
Application:	Western Blotting (WB)

#### Product Details

Immunogen:	The immunogen is a synthetic peptide directed towards the middle region of human MAN1A2
Sequence:	FALGADGSRA DKAGHYLELG AEIARTCHES YDRTALKLGP ESFKFDGAVE
Predicted Reactivity:	Cow: 100%, Dog: 100%, Guinea Pig: 100%, Horse: 100%, Human: 100%, Mouse: 100%, Rabbit: 100%, Rat: 100%, Zebrafish: 92%
Characteristics:	This is a rabbit polyclonal antibody against MAN1A2. It was validated on Western Blot using a cell lysate as a positive control.
Purification:	Affinity Purified

#### Target Details

Target:	MAN1A2
---------	--------

## Target Details

Alternative Name:	MAN1A2 ( <a href="#">MAN1A2 Products</a> )
Background:	<p>Alpha-mannosidases function at different stages of N-glycan maturation in mammalian cells. See MAN2A1 (MIM 154582) for general information. Alpha-mannosidases function at different stages of N-glycan maturation in mammalian cells. See MAN2A1 (MIM 154582) for general information. [supplied by OMIM]. PRIMARYREFSEQ_SPAN PRIMARY_IDENTIFIER</p> <p>PRIMARY_SPAN COMP 1-597 BC052954.1 17-613 598-1023 AU133800.1 118-543 1024-2908 AF027156.1 823-2707 2909-3316 BC052954.1 2925-3332 3317-4416 BC063300.1 3315-4414 4417-5388 BC052954.1 4432-5403</p> <p>Alias Symbols: MAN1B</p> <p>Protein Interaction Partner: SMAD9, UBC,</p> <p>Protein Size: 641</p>
Molecular Weight:	73 kDa
Gene ID:	10905
NCBI Accession:	<a href="#">NM_006699</a> , <a href="#">NP_006690</a>
UniProt:	<a href="#">O60476</a>

## Application Details

Application Notes:	Optimal working dilutions should be determined experimentally by the investigator.
Comment:	Antigen size: 641 AA
Restrictions:	For Research Use only

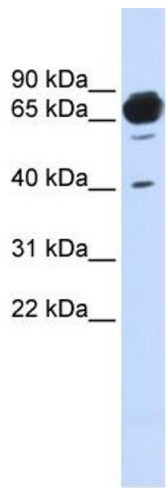
## Handling

Format:	Liquid
Concentration:	Lot specific
Buffer:	Liquid. Purified antibody supplied in 1x PBS buffer with 0.09 % (w/v) sodium azide and 2 % sucrose.
Preservative:	Sodium azide
Precaution of Use:	This product contains Sodium azide: a POISONOUS AND HAZARDOUS SUBSTANCE which should be handled by trained staff only.
Handling Advice:	Avoid repeated freeze-thaw cycles.

Handling

Storage:	-20 °C
Storage Comment:	For short term use, store at 2-8°C up to 1 week. For long term storage, store at -20°C in small aliquots to prevent freeze-thaw cycles.

Images



Western Blotting

**Image 1.** WB Suggested Anti-MAN1A2 Antibody Titration:  
0.2-1 ug/ml ELISA Titer: 1:62500 Positive Control: Human brain