

Datasheet for ABIN2782737  
**anti-LMAN2 antibody (N-Term)**[Go to Product page](#)

## 4 Images

## Overview

Quantity:	100 µL
Target:	LMAN2
Binding Specificity:	N-Term
Reactivity:	Human, Mouse, Dog, Guinea Pig, Rabbit, Rat, Cow, Horse, Zebrafish (Danio rerio)
Host:	Rabbit
Clonality:	Polyclonal
Conjugate:	This LMAN2 antibody is un-conjugated
Application:	Western Blotting (WB), Immunohistochemistry (IHC)

## Product Details

Immunogen:	The immunogen is a synthetic peptide directed towards the N terminal region of human LMAN2
Sequence:	SLIKPYQGVG SSSMPLWDFQ GSTMLTSQYV RLTPDERSKE GSIWNHQPCF
Predicted Reactivity:	Cow: 100%, Dog: 100%, Guinea Pig: 100%, Horse: 100%, Human: 100%, Mouse: 100%, Rabbit: 100%, Rat: 100%, Zebrafish: 93%
Characteristics:	This is a rabbit polyclonal antibody against LMAN2. It was validated on Western Blot and immunohistochemistry.
Purification:	Affinity Purified

## Target Details

Target:	LMAN2
---------	-------

## Target Details

Alternative Name:	LMAN2 ( <a href="#">LMAN2 Products</a> )
Background:	<p>LMAN2 plays a role as an intracellular lectin in the early secretory pathway. It interacts with N-acetyl-D-galactosamine and high-mannose type glycans and may also bind to O-linked glycans. It is involved in the transport and sorting of glycoproteins carrying high mannose-type glycans.</p> <p>Alias Symbols: C5orf8, GP36B, VIP36</p> <p>Protein Interaction Partner: UBC, RPA1, RPA3, RPA2, ATP4A, env, FRAT1, UBL4A, SUPT5H, MAPK9, FLOT1, ATP13A2, ISG15,</p> <p>Protein Size: 356</p>
Molecular Weight:	36 kDa
Gene ID:	10960
NCBI Accession:	<a href="#">NM_006816</a> , <a href="#">NP_006807</a>
UniProt:	<a href="#">Q12907</a>
Pathways:	<a href="#">SARS-CoV-2 Protein Interactome</a>

## Application Details

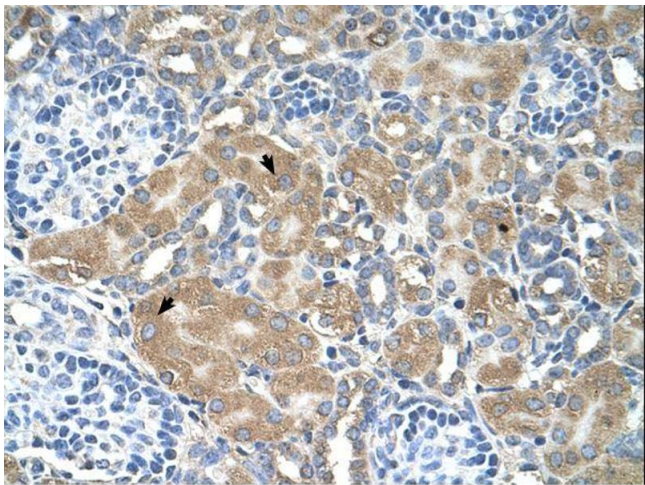
Application Notes:	Optimal working dilutions should be determined experimentally by the investigator.
Comment:	Antigen size: 356 AA
Restrictions:	For Research Use only

## Handling

Format:	Liquid
Concentration:	Lot specific
Buffer:	Liquid. Purified antibody supplied in 1x PBS buffer with 0.09 % (w/v) sodium azide and 2 % sucrose.
Preservative:	Sodium azide
Precaution of Use:	This product contains Sodium azide: a POISONOUS AND HAZARDOUS SUBSTANCE which should be handled by trained staff only.
Handling Advice:	Avoid repeated freeze-thaw cycles.
Storage:	-20 °C
Storage Comment:	For short term use, store at 2-8°C up to 1 week. For long term storage, store at -20°C in small

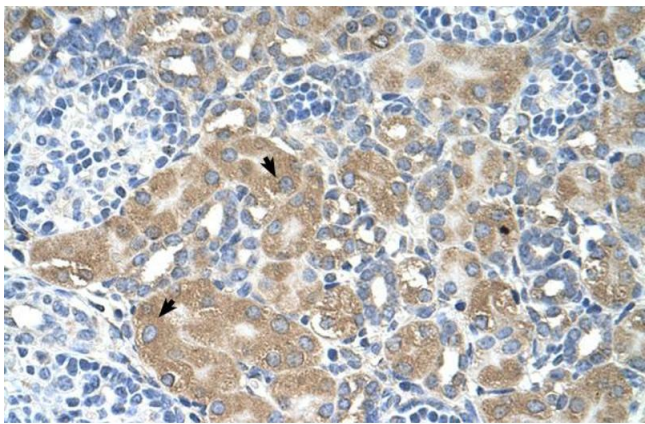
aliquots to prevent freeze-thaw cycles.

Images



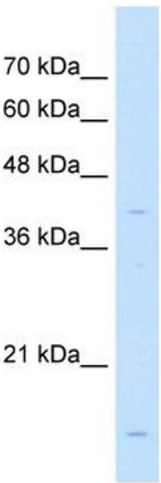
Immunohistochemistry

Image 1.



Immunohistochemistry

Image 2. Human kidney



Western Blotting

Image 3. WB Suggested Anti-LMAN2 Antibody Titration: 1 ug/ml Positive Control: Jurkat cell lysate

Please check the [product details page](#) for more images. Overall 4 images are available for ABIN2782737.