



Datasheet for ABIN2782742
anti-TMED1 antibody (Middle Region)



[Go to Product page](#)

3 Images

Overview

Quantity:	100 µL
Target:	TMED1
Binding Specificity:	Middle Region
Reactivity:	Human, Mouse, Rat, Cow, Dog, Horse, Rabbit, Guinea Pig, Pig, Zebrafish (Danio rerio)
Host:	Rabbit
Clonality:	Polyclonal
Conjugate:	This TMED1 antibody is un-conjugated
Application:	Western Blotting (WB), Immunohistochemistry (IHC)

Product Details

Immunogen:	The immunogen is a synthetic peptide directed towards the middle region of human TMED1
Sequence:	FTLESPQGVL LVSESRKADG VHTVEPTEAG DYKLCFDNSF STISEKLVFF
Predicted Reactivity:	Cow: 100%, Dog: 100%, Guinea Pig: 93%, Horse: 100%, Human: 100%, Mouse: 100%, Pig: 100%, Rabbit: 93%, Rat: 100%, Zebrafish: 77%
Characteristics:	This is a rabbit polyclonal antibody against TMED1. It was validated on Western Blot using a cell lysate as a positive control.
Purification:	Affinity Purified

Target Details

Target:	TMED1
---------	-------

Target Details

Alternative Name:	TMED1 (TMED1 Products)
Background:	<p>TMED1 was identified by its interaction with interleukin 1 receptor-like 1 (IL1RL1). This protein lacks any similarity to other interleukin 1 ligands. The functional significance of its interaction with IL1RL1 is not known. The protein encoded by this gene was identified by its interaction with interleukin 1 receptor-like 1 (IL1RL1). This protein lacks any similarity to other interleukin 1 ligands. The functional significance of its interaction with IL1RL1 is not known.</p> <p>Alias Symbols: IL1RL1LG, II1r1I, MGC1270, ST2L, Tp24</p> <p>Protein Interaction Partner: TMED9, SEC23B, UBL4A, UBC, SMAD3, IL1RL1,</p> <p>Protein Size: 227</p>
Molecular Weight:	23 kDa
Gene ID:	11018
NCBI Accession:	NM_006858 , NP_006849
UniProt:	Q13445

Application Details

Application Notes:	Optimal working dilutions should be determined experimentally by the investigator.
Comment:	Antigen size: 227 AA
Restrictions:	For Research Use only

Handling

Format:	Liquid
Concentration:	Lot specific
Buffer:	Liquid. Purified antibody supplied in 1x PBS buffer with 0.09 % (w/v) sodium azide and 2 % sucrose.
Preservative:	Sodium azide
Precaution of Use:	This product contains Sodium azide: a POISONOUS AND HAZARDOUS SUBSTANCE which should be handled by trained staff only.
Handling Advice:	Avoid repeated freeze-thaw cycles.
Storage:	-20 °C
Storage Comment:	For short term use, store at 2-8°C up to 1 week. For long term storage, store at -20°C in small

aliquots to prevent freeze-thaw cycles.

Images



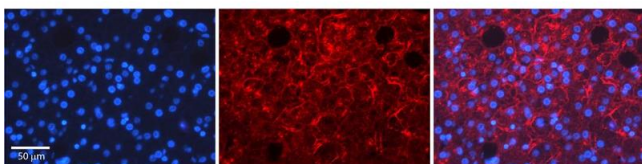
Western Blotting

Image 1. WB Suggested Anti-TMED1 Antibody Titration: 0.2-1 ug/ml ELISA Titer: 1:62500 Positive Control: 293T cell lysate TMED1 is supported by BioGPS gene expression data to be expressed in HEK293T



Western Blotting

Image 2. WB Suggested Anti-TMED1 antibody Titration: 1 ug/mL Sample Type: Human liver



Immunohistochemistry

Image 3. Rabbit Anti-TMED1 Antibody Formalin Fixed Paraffin Embedded Tissue: Human Adult liver Observed Staining: Membrane Primary Antibody Concentration: 1:100 Secondary Antibody: Donkey anti-Rabbit-Cy2/3 Secondary Antibody Concentration: 1:200 Magnification: 20X Exposure Time: 0.5 – 2.0 sec Protocol located in Reviews and Data.