

Datasheet for ABIN2782743
anti-TMED1 antibody (N-Term)

5 Images

[Go to Product page](#)

Overview

Quantity:	100 µL
Target:	TMED1
Binding Specificity:	N-Term
Reactivity:	Human, Mouse, Rat, Cow, Dog, Horse, Rabbit, Guinea Pig, Zebrafish (Danio rerio)
Host:	Rabbit
Clonality:	Polyclonal
Conjugate:	This TMED1 antibody is un-conjugated
Application:	Western Blotting (WB), Immunohistochemistry (IHC)

Product Details

Immunogen:	The immunogen is a synthetic peptide corresponding to a region of Rat
Sequence:	EAGPPPIQDG EFTFLLPAGR KQCFYQSAPA NASLETEYQV IGGAGLDVDF
Predicted Reactivity:	Cow: 100%, Dog: 100%, Guinea Pig: 100%, Horse: 100%, Human: 100%, Mouse: 100%, Rabbit: 100%, Rat: 100%, Zebrafish: 91%
Characteristics:	This is a rabbit polyclonal antibody against Tmed1. It was validated on Western Blot.
Purification:	Affinity Purified

Target Details

Target:	TMED1
Alternative Name:	Tmed1 (TMED1 Products)

Target Details

Background: Tmed1 have a potential role in protein trafficking.
Alias Symbols: Il1rl1l, MGC108769, Tmed1
Protein Interaction Partner: Tmed9,
Protein Size: 227

Molecular Weight: 25 kDa

Gene ID: 315461

NCBI Accession: [NM_001013432](#), [NP_001013450](#)

UniProt: [Q5BK85](#)

Application Details

Application Notes: Optimal working dilutions should be determined experimentally by the investigator.

Comment: Antigen size: 227 AA

Restrictions: For Research Use only

Handling

Format: Liquid

Concentration: Lot specific

Buffer: Liquid. Purified antibody supplied in 1x PBS buffer with 0.09 % (w/v) sodium azide and 2 % sucrose.

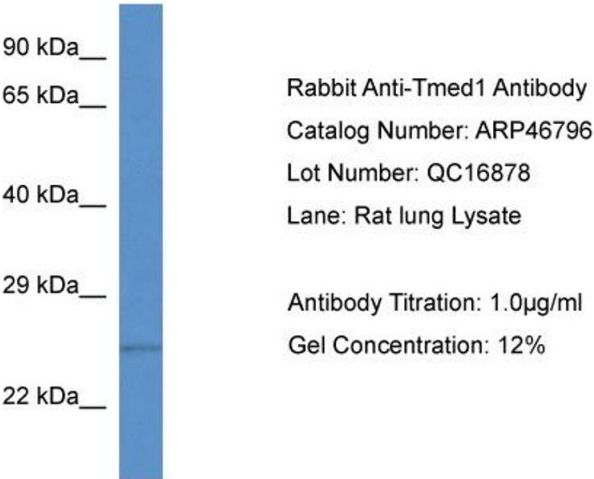
Preservative: Sodium azide

Precaution of Use: This product contains Sodium azide: a POISONOUS AND HAZARDOUS SUBSTANCE which should be handled by trained staff only.

Handling Advice: Avoid repeated freeze-thaw cycles.

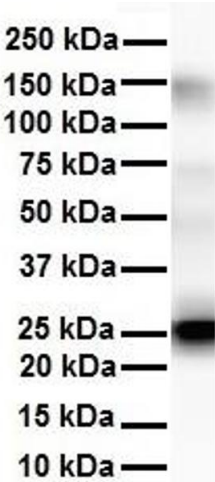
Storage: -20 °C

Storage Comment: For short term use, store at 2-8°C up to 1 week. For long term storage, store at -20°C in small aliquots to prevent freeze-thaw cycles.



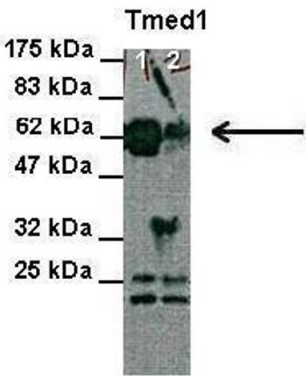
Western Blotting

Image 1. WB Suggested Anti-Tmed1 Antibody Titration: 1.0 ug/ml Positive Control: Rat Lung



Western Blotting

Image 2. WB Suggested Anti-Tmed1 antibody Titration: 1 ug/mL Sample Type: Human liver



Western Blotting

Image 3. Lanes: Lane 1 and 2: 30 ug HEK-293 cell lysate
Primary Antibody Dilution: 1:1000 Secondary Antibody: Anti-Rabbit HRP Secondary Antibody Dilution: 1:2000 Gene Name: Tmed1 Submitted by: Anonymous

See Immunoblot 2 Data and Customer Feedback for more information

Please check the [product details page](#) for more images. Overall 5 images are available for ABIN2782743.