



[Go to Product page](#)

Datasheet for ABIN2782746

anti-Melanoma gp100 antibody (N-Term)

4 Images

1 Publication

Overview

Quantity:	100 µL
Target:	Melanoma gp100 (PMEL)
Binding Specificity:	N-Term
Reactivity:	Human, Horse, Rat, Mouse, Dog, Guinea Pig, Rabbit, Cow, Goat
Host:	Rabbit
Clonality:	Polyclonal
Conjugate:	This Melanoma gp100 antibody is un-conjugated
Application:	Immunohistochemistry (IHC), Western Blotting (WB)

Product Details

Immunogen:	The immunogen is a synthetic peptide directed towards the N terminal region of human SILV
Sequence:	HFLRNQPLTF ALQLHDPSGY LAEADLSYTW DFGDSSGTLI SRALVVTHTY
Predicted Reactivity:	Cow: 93%, Dog: 86%, Goat: 93%, Guinea Pig: 93%, Horse: 93%, Human: 100%, Mouse: 100%, Rabbit: 86%, Rat: 93%
Characteristics:	This is a rabbit polyclonal antibody against SILV. It was validated on Western Blot and immunohistochemistry.
Purification:	Protein A purified

Target Details

Target:	Melanoma gp100 (PMEL)
---------	-----------------------

Target Details

Alternative Name:	SILV (PMEL Products)
Background:	<p>SILV could be a melanogenic enzyme. It could represent an oncofetal self-antigen that is normally expressed at low levels in quiescent adult melanocytes but overexpressed by proliferating neonatal melanocytes and during tumor growth. Release of the soluble form, ME20-S, it could protect tumor cells from antibody mediated immunity.</p> <p>Alias Symbols: D12S53E, ME20, PMEL17, SI, SIL, gp100, P1, P100, SILV, ME20M, ME20-M</p> <p>Protein Size: 661</p>
Molecular Weight:	70 kDa
Gene ID:	6490
NCBI Accession:	NM_006928 , NP_008859
UniProt:	P40967

Application Details

Application Notes:	Optimal working dilutions should be determined experimentally by the investigator.
Comment:	Antigen size: 661 AA
Restrictions:	For Research Use only

Handling

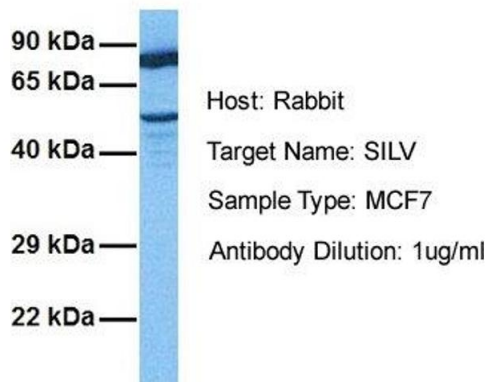
Format:	Liquid
Concentration:	Lot specific
Buffer:	Liquid. Purified antibody supplied in 1x PBS buffer with 0.09 % (w/v) sodium azide and 2 % sucrose.
Preservative:	Sodium azide
Precaution of Use:	This product contains Sodium azide: a POISONOUS AND HAZARDOUS SUBSTANCE which should be handled by trained staff only.
Handling Advice:	Avoid repeated freeze-thaw cycles.
Storage:	-20 °C
Storage Comment:	For short term use, store at 2-8°C up to 1 week. For long term storage, store at -20°C in small aliquots to prevent freeze-thaw cycles.

Product cited in:

Theos, Truschel, Tenza, Hurbain, Harper, Berson, Thomas, Raposo, Marks: "A luminal domain-dependent pathway for sorting to intraluminal vesicles of multivesicular endosomes involved in organelle morphogenesis." in: **Developmental cell**, Vol. 10, Issue 3, pp. 343-54, (2006) ([PubMed](#)).

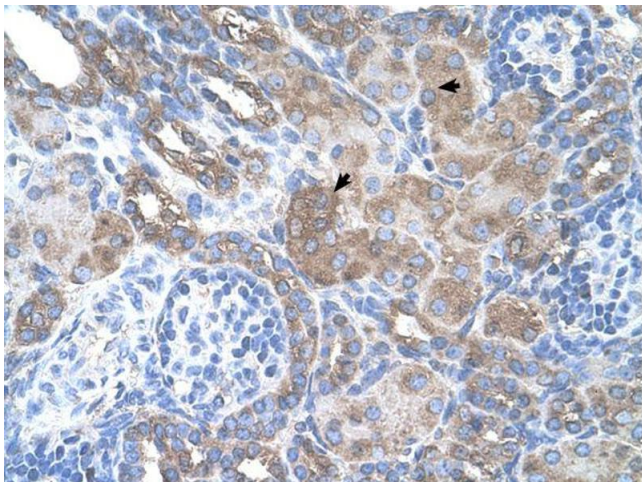
Images

SILV



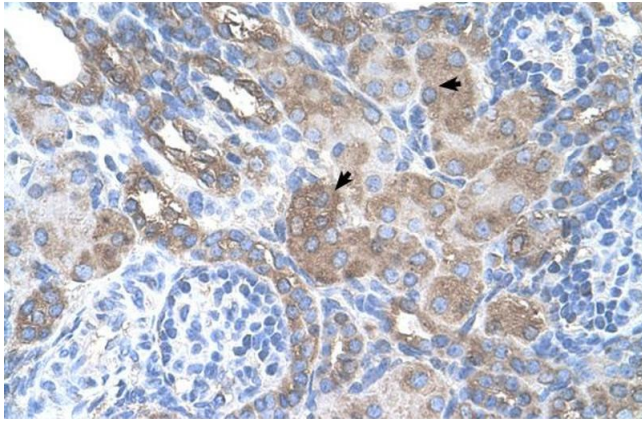
Western Blotting

Image 1. Host: Rabbit Target Name: SILV Sample Tissue: Human MCF7 Antibody Dilution: 1.0ug/ml



Immunohistochemistry

Image 2.



Immunohistochemistry

Image 3. Human kidney

Please check the [product details page](#) for more images. Overall 4 images are available for ABIN2782746.