

Datasheet for ABIN2782748  
**anti-MMP23B antibody (N-Term)**[Go to Product page](#)

## 1 Image

## Overview

Quantity:	100 µL
Target:	MMP23B
Binding Specificity:	N-Term
Reactivity:	Human, Rat, Mouse, Dog, Cow, Guinea Pig, Zebrafish (Danio rerio), Horse
Host:	Rabbit
Clonality:	Polyclonal
Conjugate:	This MMP23B antibody is un-conjugated
Application:	Western Blotting (WB)

## Product Details

Immunogen:	The immunogen is a synthetic peptide directed towards the N terminal region of human MMP23B
Sequence:	ILSFPRNLLS PRETRRALAA AFRMWSDVSP FSFREVAP EQ PSDLRIGFYP
Predicted Reactivity:	Cow: 100%, Dog: 100%, Guinea Pig: 100%, Horse: 100%, Human: 100%, Mouse: 100%, Rat: 100%, Zebrafish: 79%
Characteristics:	This is a rabbit polyclonal antibody against MMP23B. It was validated on Western Blot using a cell lysate as a positive control.
Purification:	Affinity Purified

## Target Details

Target:	MMP23B
---------	--------

## Target Details

Alternative Name:	MMP23B ( <a href="#">MMP23B Products</a> )
Background:	<p>MMP23B is a member of the matrix metalloproteinase (MMP) family, and it is part of a duplicated region of chromosome 1p36.3. Proteins of the matrix metalloproteinase (MMP) family are involved in the breakdown of extracellular matrix in normal physiological processes, such as embryonic development, reproduction, and tissue remodeling, as well as in disease processes, such as arthritis and metastasis. This gene (MMP23B) encodes a member of the matrix metalloproteinase (MMP) family, and it is part of a duplicated region of chromosome 1p36.3. Proteins of the matrix metalloproteinase (MMP) family are involved in the breakdown of extracellular matrix in normal physiological processes, such as embryonic development, reproduction, and tissue remodeling, as well as in disease processes, such as arthritis and metastasis. This gene belongs to the more telomeric copy of the duplicated region.</p> <p>Alias Symbols: MIFR, MIFR-1, MMP22, MMP23A</p> <p>Protein Interaction Partner: GLRX,</p> <p>Protein Size: 390</p>
Molecular Weight:	36 kDa
Gene ID:	8510
NCBI Accession:	<a href="#">NM_006983</a> , <a href="#">NP_008914</a>
UniProt:	<a href="#">O75900</a>

## Application Details

Application Notes:	Optimal working dilutions should be determined experimentally by the investigator.
Comment:	Antigen size: 390 AA
Restrictions:	For Research Use only

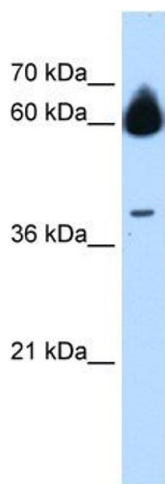
## Handling

Format:	Liquid
Concentration:	Lot specific
Buffer:	Liquid. Purified antibody supplied in 1x PBS buffer with 0.09 % (w/v) sodium azide and 2 % sucrose.
Preservative:	Sodium azide
Precaution of Use:	This product contains Sodium azide: a POISONOUS AND HAZARDOUS SUBSTANCE which

## Handling

	should be handled by trained staff only.
Handling Advice:	Avoid repeated freeze-thaw cycles.
Storage:	-20 °C
Storage Comment:	For short term use, store at 2-8°C up to 1 week. For long term storage, store at -20°C in small aliquots to prevent freeze-thaw cycles.

## Images



**Western Blotting**

**Image 1.** WB Suggested Anti-MMP23B Antibody Titration:  
0.2-1 ug/ml Positive Control: Jurkat cell lysate