

Datasheet for ABIN2782752
anti-RER1 antibody (Middle Region)[Go to Product page](#)

2 Images

Overview

Quantity:	100 µL
Target:	RER1
Binding Specificity:	Middle Region
Reactivity:	Human, Mouse, Rat, Rabbit, Zebrafish (Danio rerio), Cow, Dog, Guinea Pig, Horse
Host:	Rabbit
Clonality:	Polyclonal
Conjugate:	This RER1 antibody is un-conjugated
Application:	Immunohistochemistry (IHC), Western Blotting (WB)

Product Details

Immunogen:	The immunogen is a synthetic peptide directed towards the middle region of human RER1
Sequence:	GIYHLNLFIA FLSPKVDPSL MEDSDDGPSL PTKQNEEFRP FIRRLPEFKF
Predicted Reactivity:	Cow: 100%, Dog: 100%, Guinea Pig: 100%, Horse: 100%, Human: 100%, Mouse: 100%, Rabbit: 100%, Rat: 100%, Zebrafish: 79%
Characteristics:	This is a rabbit polyclonal antibody against RER1. It was validated on Western Blot using a cell lysate as a positive control.
Purification:	Affinity Purified

Target Details

Target:	RER1
---------	------

Target Details

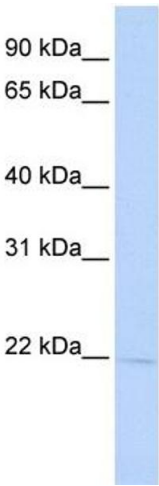
Alternative Name:	RER1 (RER1 Products)
Background:	<p>RER1 is involved in the retrieval of endoplasmic reticulum membrane proteins from the early Golgi compartment.</p> <p>Alias Symbols: RP4-740C4.2</p> <p>Protein Interaction Partner: SYVN1, UBC, RNF2, env, UBL4A, SH3GL3, HAP1, IMMT,</p> <p>Protein Size: 196</p>
Molecular Weight:	23 kDa
Gene ID:	11079
NCBI Accession:	NM_007033 , NP_008964
UniProt:	O15258

Application Details

Application Notes:	Optimal working dilutions should be determined experimentally by the investigator.
Comment:	Antigen size: 196 AA
Restrictions:	For Research Use only

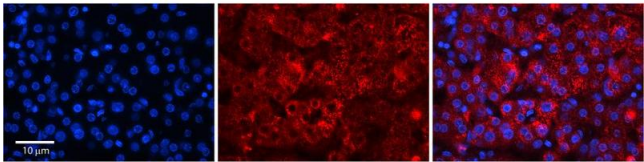
Handling

Format:	Liquid
Concentration:	Lot specific
Buffer:	Liquid. Purified antibody supplied in 1x PBS buffer with 0.09 % (w/v) sodium azide and 2 % sucrose.
Preservative:	Sodium azide
Precaution of Use:	This product contains Sodium azide: a POISONOUS AND HAZARDOUS SUBSTANCE which should be handled by trained staff only.
Handling Advice:	Avoid repeated freeze-thaw cycles.
Storage:	-20 °C
Storage Comment:	For short term use, store at 2-8°C up to 1 week. For long term storage, store at -20°C in small aliquots to prevent freeze-thaw cycles.



Western Blotting

Image 1. WB Suggested Anti-RER1 Antibody Titration: 0.2-1 ug/ml ELISA Titer: 1:62500 Positive Control: 293T cell lysate



Immunohistochemistry

Image 2. Rabbit Anti-RER1 Antibody Formalin Fixed Paraffin Embedded Tissue: Human Adult Liver Observed Staining: Cytoplasm in hepatocytes, strong signal, very wide tissue distribution Primary Antibody Concentration: 1:100 Secondary Antibody: Donkey anti-Rabbit-Cy3 Secondary Antibody Concentration: 1:200 Magnification: 20X Exposure Time: 0.5 – 2.0 sec Protocol located in Reviews and Data.